

A Population Assessment
of Recolonization by the Fat Pocketbook Mussel
of Dredged Habitat in the St. Francis Floodway, Arkansas

Final Report

January 31, 1997

John L. Harris, Ph.D.
12301 Pleasant Forest Drive
Little Rock, Arkansas 72212

A POPULATION ASSESSMENT
OF RECOLONIZATION BY THE FAT POCKETBOOK MUSSEL
OF DREDGED HABITAT IN THE ST. FRANCIS FLOODWAY, ARKANSAS

Introduction

The St. Francis River drainage mussel fauna has been extensively surveyed, and the distribution and status of freshwater mussels, especially the endangered fat pocketbook (*Potamilus capax*), has been reported by several authors.

Publications relating the St. Francis River drainage mussel fauna and/or *Potamilus capax* include: Ahlstedt and Jenkinson 1987, 1991; Bates and Dennis 1983; Dennis 1984; Ecological Consultants Inc. 1984; Ecosearch, Inc. 1985; Harris 1986; Harris and Gordon 1987; Jenkinson 1989; Jenkinson and Ahlstedt 1987; and Koch 1993. A survey of location, species composition and community estimates for mussel beds in the St. Francis River was performed in 1993 (Posey, in prep.)

On February 5, 1986, the U.S. Fish and Wildlife Service provided the U.S. Army Corps of Engineers with a biological opinion on the effects of conducting flood control work in the St. Francis Floodway from River Mile 46.6 to 57.6. Subsequently, the Tennessee Valley Authority surveyed the project area and relocated all live *Potamilus capax* encountered in a four-mile reach of the Floodway (approximately miles 46.1 to 50.1) to transplant sites on Straight Slough and Cross County Ditch, Arkansas (Jenkinson 1989) and to two sites in the Mississippi River, Missouri (Koch 1993).

The channel cleanout was conducted in two phases (pers. comm. G. McAvoy, Corps of Engineers). Phase I extended from Floodway Mile 45.5 at the County Road 48S bridge (Big Eddy Bridge) and extended upstream to approximately Floodway Mile 49.0 at the County Road 48N bridge (Old Military Bridge), a distance of approximately 4.5 river miles. Work was accomplished by

long boom draglines, and excavated material was placed on either side of channel in spoil areas 30 to 50 feet behind top bank of the new channel. The project channel width was 300 feet and design bottom grade was 164.4 msl at Big Eddy Bridge which transitioned upstream to 166.2 msl at Old Military Road Bridge. Work began in October 1988 and was completed in October 1991, and approximately 1,996,083 cubic yards were excavated from the channel.

Phase II extended from Floodway Mile 57.0 (approximately 1.0 mile south of the U. S. Highway 64 bridge) downstream to Floodway Mile 49.0, a distance of approximately 7.7 river miles. Work was accomplished by hydraulic dredge, and material was pumped from the channel and placed on the left descending bank in designated disposal areas constructed by the contractor. The project channel width was 180 feet at Floodway Mile 57.0 and continued downstream to approximately Floodway Mile 53 where the channel was transitioned to 300 feet downstream to Floodway Mile 49.0. Bottom design grade at Floodway Mile 57.0 was 169.3 msl and transitioned downstream to 166.2 msl at Floodway Mile 49.0. Work started in February 1991 and was completed in December 1991, and approximately 4,628,120 cubic yards were removed from the channel.

The purpose of the mussel survey documented by this report was to assess the rate of mussel recolonization of the approximately 11.0 river miles that were reopened and widened. Also, effort was made to determine mussel density at sample sites and in the total sample area, mussel age distribution, and habitat conditions. This survey was conducted 16-19 July 1995, and the general survey area is illustrated in Figure 1.

Methods

A dive survey was conducted to assess the rate of mussel recolonization (with emphasis on *Potamilus capax*) between River Miles 46.6 - 57.6 in the St.

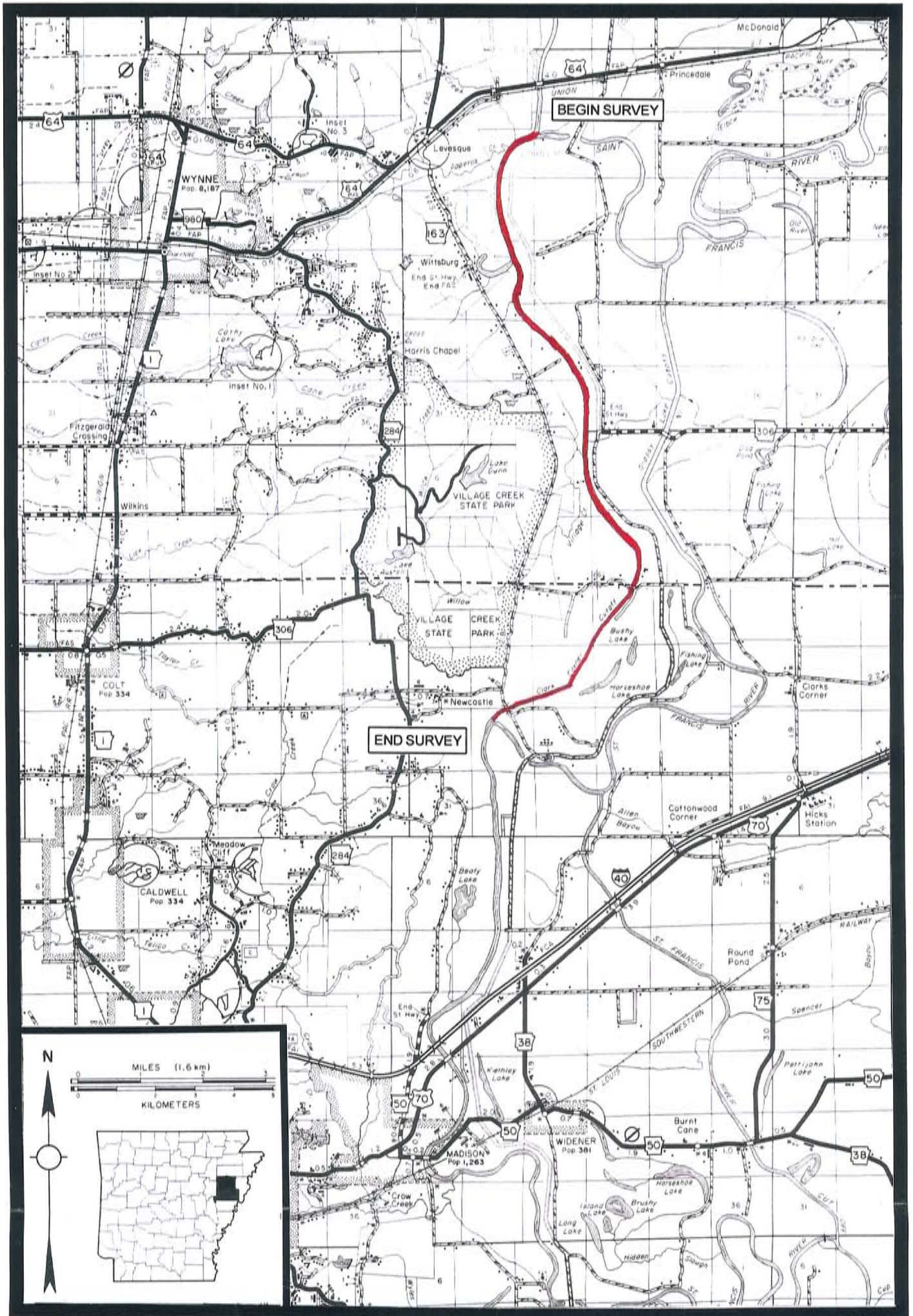


Figure 1. Mussel survey area, St. Francis Floodway River miles 46.6 - 57.6.

Francis Floodway. An attempt was made to search all microhabitats within the project area for the presence of juvenile mussels. Methodology consisted of hand searching the substrate while moving downstream in a back and forth (zig-zag) pattern over the specific search area. All searches were conducted by a single diver using surface air supplied support apparatus (Hookah gear).

Searches were timed and all live mussels encountered were bagged, brought to the surface for identification, and enumerated. All dead shells of *Potamilus capax* encountered were also collected. Length, width, and depth of most live *P. capax* specimens was measured to the nearest 0.1 mm using dial calipers and recorded. All live *Potamilus capax* measured were returned to the substrate in life position.

One square meter, semi-quantitative quadrat samples were taken at sites 17 (n=6) and 18-19 (n=10). Square meter sample areas were delineated by PVC tube quadrangles. The sample quadrat area was hand searched by the diver and all mussels collected, bagged and brought to the surface for identification and measurements.

Individual semi-quantitative samples at Site 17 were evenly disbursed longitudinally along the length of the site and were placed to include samples from differing depths and current velocities. Individual samples for Site 18-19 were taken from ten locations relatively evenly disbursed longitudinally between qualitative sample sites 18 and 19. The quadrat samples were taken in areas of highest mussel density within this mussel bed.

Results

A total of 49 specific sites (47 dive sites, two sandbar sites) were searched during the survey (Figure 2). Field notes for the survey sites are in Appendix A. Two hundred sixty (260) live and 54 fresh dead specimens representing 18 species

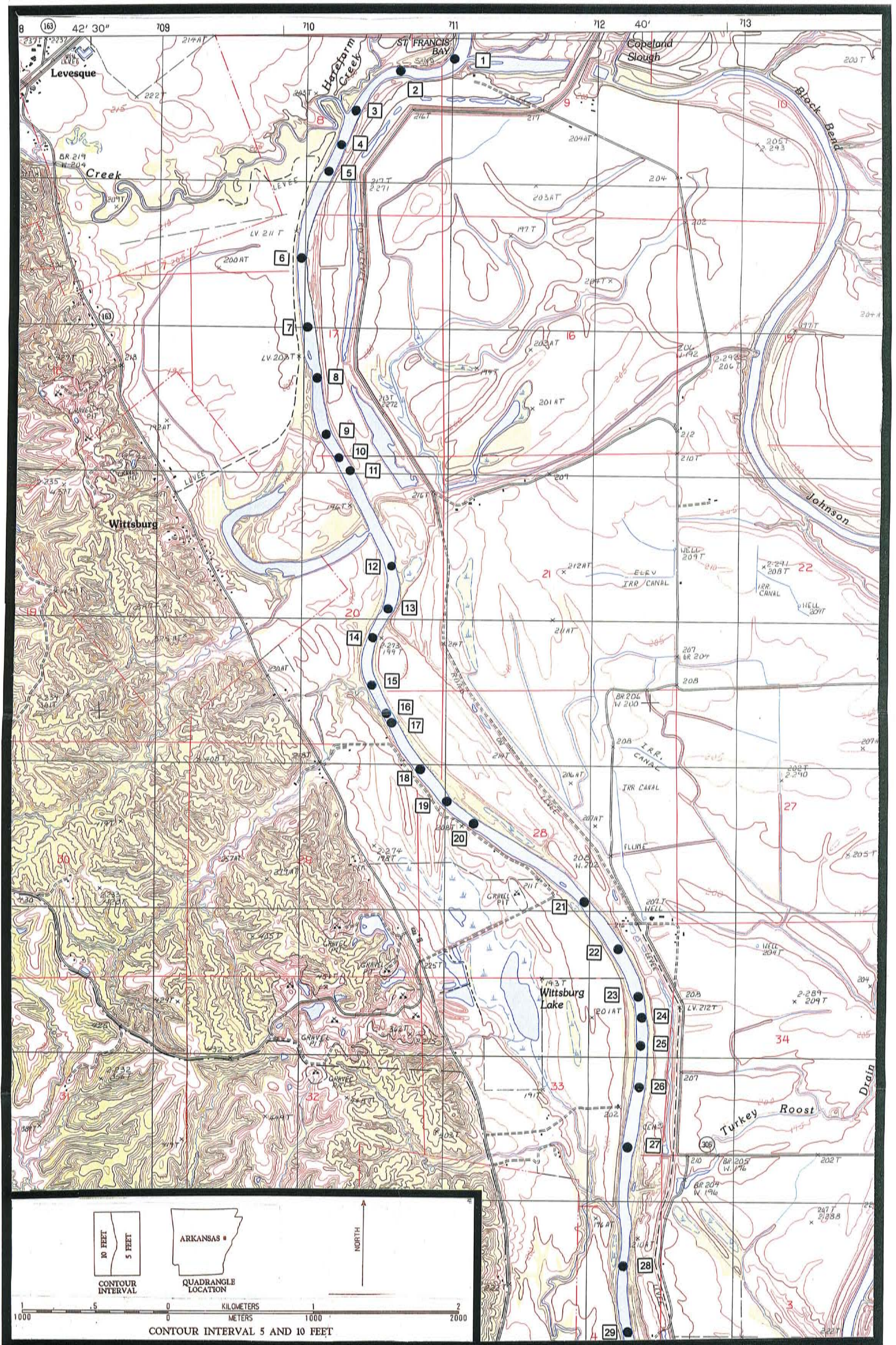


Figure 2. Mussel survey sites, St. Francis Floodway River miles 46.6 - 57.6.

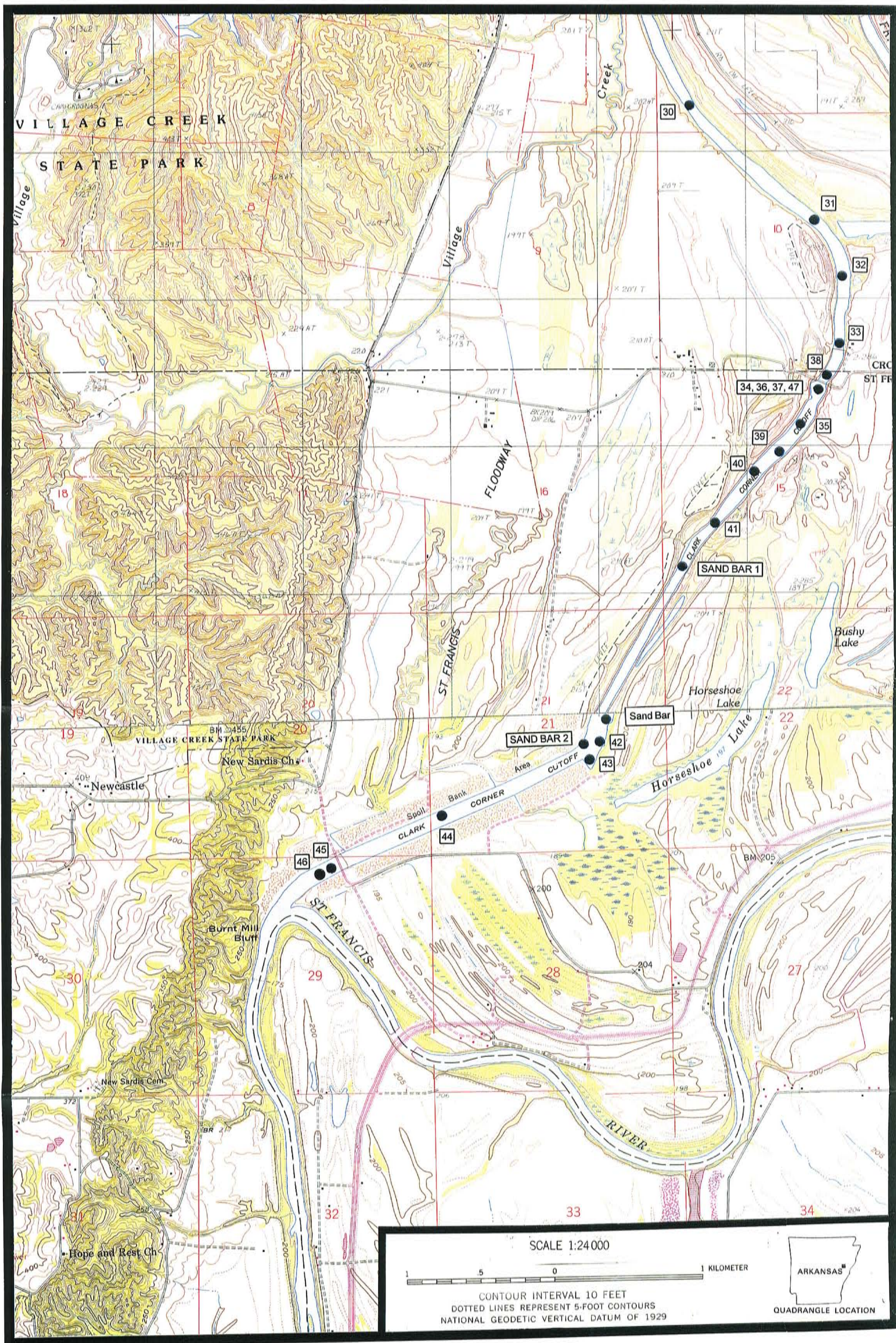


Figure 2. Mussel survey sites, St. Francis Floodway River miles 46.6 - 57.6.

were examined during the survey (Table 1). Five species represented approximately 73% of the live specimens encountered, and these included *Amblema plicata* (21.5%), *Leptodea fragilis* (18.8%), *Potamilus capax* (13.1%), *Potamilus ohiensis* (9.2%), and *P. purpuratus* (10.0%). Six species (*Anodonta suborbiculata*, *Arcidens confragosus*, *Ligumia subrostrata*, *Pyganodon grandis*, *Truncilla donaciformis*, and *T. truncata*) were represented during this survey by only one or two live individuals.

Thirty-four (34) live and 26 fresh dead *Potamilus capax* were encountered. Table 2 reports length, width and depth measurements for 25 of the 34 live fat pocketbook specimens examined.

Six semi-quantitative quadrat samples at Site 17 yielded five specimens for a mean density of 0.8 mussels/m². Species included *Amblema plicata* (1 specimen), *Leptodea fragilis* (2), *Potamilus purpuratus* (1) and *Truncilla truncata* (1).

Semi-quantitative sample results for Site 18-19 are summarized in Table 3, and Field data sheets are in Appendix B. Mean mussel density for 10 square meter quadrat samples was 6.6 (standard deviation = 3.7). *Amblema plicata* represented 50% of the 66 total specimens retrieved and occurred in 10 of 10 (10/10) m² quadrat samples. *Megalonaias nervosa* comprised 18.2% of the total sample and its frequency of occurrence was 7/10. Ten species occurred in the semi-quantitative samples, and a single specimen of *Potamilus capax* was encountered.

Juvenile and sub-adult individuals of *Amblema plicata* (Site 16, length 44.1 mm, depth 31.9 mm, age 6+ years; Site 34, length 43.3 mm, depth 32.5 mm; Site 43, lengths 31.4, 41.6, depths 31.4 mm, 23.4 mm, ages 4+, 3+ years), *Leptodea fragilis* (Site 17, length 10.1 mm), *Obliquaria reflexa* (Site 13, depth 19.4 mm; Site 43, depth 23.8, age 4+ years), *Potamilus capax* (Sandbar 1, length 46.8 mm, Sandbar 2, length 48.3, age 1+ years), *Quadrula pustulosa* (Site 36, length 31.3

Scientific Name Common Name	Sample Site																					
	<u>2</u>	<u>3</u>	<u>4</u>	<u>5</u>	<u>6</u>	<u>7</u>	<u>8</u>	<u>12</u>	<u>13</u>	<u>14</u>	<u>15</u>	<u>16</u>	<u>17</u>	<u>18</u>	<u>19</u>	<u>20</u>	<u>21</u>	<u>22</u>	<u>23</u>	<u>24</u>	<u>25</u>	<u>26</u>
<i>Amblema plicata</i> threeridge	0,0	0,0	0,0	0,0	0,0	0,0	0,0	0,0	0,0	0,0	0,0	1,0	1,0	17,3	33,0	0,0	0,0	0,0	0,0	0,0	0,0	0,0
<i>Anodonta suborbiculata</i> ✓ flat floater	0,0	0,0	0,0	0,0	0,0	0,0	0,0	0,0	0,0	0,0	0,0	0,0	0,0	0,0	0,0	0,0	0,0	0,0	0,0	0,0	0,0	0,0
<i>Arcidens confragosus</i> rock-pocketbook	0,0	0,0	0,0	0,0	0,0	0,0	0,0	0,0	0,0	0,0	0,0	0,0	0,0	0,0	0,0	0,0	0,0	0,0	0,0	0,0	0,0	0,0
<i>Lampsilis teres</i> yellow sandshell	0,0	0,0	0,0	0,0	0,1	0,0	0,0	0,0	0,0	0,0	0,0	1,0	0,0	0,0	0,0	0,0	0,0	0,0	0,0	0,0	0,0	0,0
<i>Lasmigona complanata</i> white heelsplitter	0,0	0,0	0,0	0,0	0,0	0,0	0,0	1,0	1,0	1,0	0,0	1,0	0,0	0,0	0,0	0,0	0,0	0,0	0,0	0,0	0,0	0,0
<i>Leptodea fragilis</i> fragile papershell	1,0	1,0	0,1	0,0	2,0	2,0	0,0	2,0	2,0	1,0	0,0	3,0	2,0	3,0	3,0	4,0	0,0	0,0	0,0	0,0	1,0	0,0
<i>Ligumia subrostrata</i> pondhorn	0,0	0,0	0,0	0,0	0,0	0,0	0,0	0,0	0,0	0,0	0,0	0,0	0,0	0,0	0,0	0,0	0,0	0,0	0,0	0,0	1,0	0,0
<i>Megaloniaias nervosa</i> washboard	0,0	0,0	0,0	0,0	0,0	0,0	0,0	0,0	0,0	0,0	0,0	0,0	0,0	0,0	12,0	0,0	0,0	0,0	0,0	0,0	0,0	0,0
<i>Obliquaria reflexa</i> threehorn wartyback	0,0	0,0	0,0	0,0	0,0	0,0	0,0	0,0	1,0	0,0	0,0	0,0	0,0	0,1	4,0	0,0	0,0	0,0	0,0	0,0	0,0	0,0
<i>Potamilus capax</i> ✓ fat pocketbook	0,0	0,0	0,1	0,0	2,1	0,0	2,0	3,0	0,0	2,0	0,0	1,0	0,0	1,0	2,0	0,0	0,0	0,0	0,0	0,0	0,0	0,2
<i>Potamilus ohiensis</i> pink heelsplitter	0,0	0,0	1,0	0,0	1,0	0,0	0,0	1,0	1,0	3,0	2,0	1,0	0,0	2,0	3,0	0,0	2,0	0,0	0,0	1,0	0,0	0,0
<i>Potamilus purpuratus</i> bleufer	0,0	2,0	0,0	0,0	0,0	0,0	1,0	0,0	1,0	0,0	1,0	2,0	1,0	2,0	4,0	0,0	0,0	2,0	1,0	1,0	0,0	0,0
<i>Pyganodon grandis</i> giant floater	0,0	0,0	0,0	0,0	0,0	0,0	0,0	0,0	0,0	0,0	0,0	0,0	0,0	0,0	0,0	0,0	0,0	0,0	0,0	0,0	0,0	0,0
<i>Quadrula nodulata</i> wartyback	0,0	0,0	0,0	0,0	0,0	0,0	0,0	0,0	1,0	0,0	1,0	0,0	0,0	0,0	2,0	0,0	0,0	0,0	0,0	1,0	0,0	0,0
<i>Quadrula pustulosa</i> pimpleback	0,0	0,0	0,0	2,0	0,0	0,0	0,0	0,0	0,0	0,0	0,0	0,0	0,0	2,0	1,0	0,0	0,0	0,0	0,0	0,0	0,0	0,0
<i>Quadrula quadrula</i> mapleleaf	0,0	0,0	0,0	0,0	1,0	0,0	0,0	0,0	0,0	0,0	0,0	1,0	0,0	0,0	3,0	0,0	0,0	0,0	0,0	0,0	0,0	1,0
<i>Truncilla donaciformis</i> fawnsfoot	0,1	0,0	0,0	0,0	0,0	0,0	0,0	0,0	0,0	0,0	0,0	0,0	1,0	0,0	0,0	0,0	0,0	0,0	0,0	0,0	0,0	0,0
<i>Truncilla truncata</i> deertoe	0,0	0,0	0,0	0,0	0,0	0,0	0,0	0,0	0,0	0,0	0,0	0,0	0,0	0,0	0,0	0,0	0,0	0,0	0,0	0,0	0,0	0,0
Total Specimens	1,1	3,0	1,2	2,0	6,2	2,0	3,0	7,0	7,0	7,0	4,0	11,0	5,0	27,4	67,0	4,0	2,0	2,0	1,0	3,0	2,0	1,2

* Includes quantitative sample specimens.

Table 1. Mussel species and specimens (live, fresh dead) collected at sample sites. Percent Total = percent of live specimens.

Scientific Name Common Name	Sample Site																			Total	Percent Total
	<u>27</u>	<u>28</u>	<u>29</u>	<u>30</u>	<u>31</u>	<u>33</u>	<u>34</u>	<u>36</u>	<u>37</u>	<u>38</u>	<u>41</u>	<u>42</u>	<u>43</u>	<u>44</u>	<u>45</u>	<u>46</u>	<u>47</u>	<u>SB1</u>	<u>SB2</u>		
<i>Amblema plicata</i> threeridge	0,0	0,0	0,0	0,0	0,0	0,0	1,0	0,0	0,0	0,0	0,0	1,0	0,0	0,0	0,0	0,0	0,0	0,0	2,0	56,3	21.5
<i>Anodonta suborbiculata</i> flat floater	1,0	0,0	0,0	0,0	0,0	0,0	0,0	0,0	0,0	0,0	0,0	0,0	0,0	0,0	0,0	0,0	0,0	0,0	0,0	1,0	0.4
<i>Arcidens confragosus</i> rock-pocketbook	0,0	0,0	0,0	0,0	0,0	1,0	0,0	0,0	0,0	0,0	0,0	0,0	0,0	0,0	0,0	0,0	0,0	0,0	0,0	1,0	0.4
<i>Lampsilis teres</i> yellow sandshell	0,0	0,0	0,0	0,0	0,0	0,0	3,0	0,0	0,0	1,0	0,0	0,0	0,0	0,0	0,0	0,0	0,0	0,0	0,0	5,1	1.9
<i>Lasmigona complanata</i> white heelsplitter	0,0	0,0	0,0	0,0	0,0	1,0	1,0	0,0	0,0	0,0	0,0	4,0	0,0	0,0	0,0	0,0	0,0	0,0	0,0	10,0	3.8
<i>Leptodea fragilis</i> fragile papershell	1,0	0,0	0,0	1,0	1,0	0,0	2,2	1,0	2,0	0,0	0,0	0,0	0,0	2,0	1,0	0,0	11,0	0,3	0,5	49,11	18.8
<i>Ligumia subrostrata</i> pondhorn	0,0	1,0	0,0	0,0	0,0	0,0	0,0	0,0	0,0	0,0	0,0	0,0	0,0	0,0	0,0	0,0	0,0	0,0	0,0	2,0	0.8
<i>Megaloniaias nervosa</i> washboard	0,0	0,0	0,0	0,0	0,0	0,0	0,0	0,0	0,0	0,0	0,0	0,0	0,0	0,0	0,0	0,0	0,0	0,0	0,0	12,0	4.6
<i>Obliquaria reflexa</i> threehorn wartyback	0,0	0,0	0,0	0,0	0,0	0,0	0,0	0,0	0,0	0,0	0,0	1,0	0,0	0,0	0,0	0,0	0,0	0,0	1,0	7,1	2.7
<i>Potamilus capax</i> fat pocketbook	0,0	0,0	0,0	0,0	0,0	3,0	1,5	0,0	1,1	0,0	0,3	1,2	0,2	9,0	1,0	1,0	1,1	0,3	3,5	34,26	13.1
<i>Potamilus ohiensis</i> pink heelsplitter	0,0	0,0	0,0	0,0	2,0	1,0	0,0	0,0	0,0	0,0	0,0	3,0	0,0	0,0	0,0	0,0	0,0	0,7	0,2	24,9	9.2
<i>Potamilus purpuratus</i> bleufer	1,0	0,0	0,0	0,0	2,0	1,0	1,0	0,0	0,0	0,0	0,0	0,0	0,0	3,1	0,0	0,0	0,0	0,0	0,0	26,1	10.0
<i>Pyganodon grandis</i> giant floater	0,0	1,0	1,0	0,0	0,0	0,0	0,0	0,0	0,0	0,0	0,0	0,0	0,0	0,0	0,0	0,0	0,0	0,0	0,0	2,0	0.8
<i>Quadrula nodulata</i> wartyback	0,0	0,0	0,0	0,0	1,0	0,0	2,0	0,0	0,0	0,0	0,0	3,0	0,0	0,0	0,0	1,0	0,0	0,0	0,0	12,0	4.6
<i>Quadrula pustulosa</i> pimpleback	0,0	0,0	0,0	0,0	0,0	0,0	0,0	1,0	0,0	0,0	0,0	0,0	0,0	0,0	0,0	0,0	1,0	0,0	0,0	7,0	2.7
<i>Quadrula quadrula</i> mapleleaf	0,0	0,0	0,0	0,0	0,0	0,0	0,0	0,0	0,0	0,0	0,0	1,0	0,0	0,0	1,0	0,0	0,0	0,0	1,0	9,0	3.5
<i>Truncilla donaciformis</i> fawnsfoot	0,0	0,0	0,0	0,0	0,0	0,0	0,0	0,0	0,0	0,0	0,0	0,0	0,0	0,0	0,0	0,0	0,0	0,0	0,0	1,1	0.4
<i>Truncilla truncata</i> deertoe	0,0	0,0	0,0	0,0	2,0	0,0	0,0	0,0	0,0	0,0	0,0	0,0	0,0	0,0	0,0	0,0	0,0	0,0	0,0	2,0	0.8
Total Specimens	3,0	2,0	1,0	1,0	8,0	7,0	11,7	2,0	3,1	1,0	0,3	14,2	0,2	14,1	3,0	2,0	13,1	0,13	7,12	260,53	100.0

Table 1. Mussel species and specimens (live, fresh dead) collected at sample sites. Percent Total = percent of live specimens.

<u>Scientific name</u> <u>common name</u>	<u>Range</u>	<u>Mean</u>	<u>(SD)</u>	<u>Freq.</u>	<u>Total</u>	<u>Percent</u> <u>Total</u>
<i>Amblema plicata</i> threeridge	1 - 7	3.3	1.89	10/10	33	50.0
<i>Leptodea fragilis</i> fragile papershell	0 - 2	0.3	0.68	2/10	3	4.5
<i>Megaloniais nervosa</i> washboard	0 - 4	1.2	1.23	7/10	12	18.2
<i>Obliquaria reflexa</i> threehorn wartyback	0 - 2	0.4	0.70	3/10	4	6.1
<i>Potamilus capax</i> fat pocketbook	0 - 1	0.1	0.32	1/10	1	1.5
<i>Potamilus ohiensis</i> pink heelsplitter	0 - 2	0.3	0.68	2/10	3	4.5
<i>Potamilus purpuratus</i> bleufer	0 - 2	0.4	0.70	3/10	4	6.1
<i>Quadrula nodulata</i> wartyback	0 - 1	0.2	0.42	2/10	2	3.0
<i>Quadrula pustulosa</i> pimpleback	0 - 1	0.1	0.32	1/10	1	1.5
<i>Quadrula quadrula</i> mapleleaf	0 - 1	0.3	0.48	3/10	3	4.5
Total	1 - 13	6.6	3.69	10/10	66	99.9

Table 2. Quadrat sample (n=10) results, survey site 18-19. (SD = standard deviation, Freq. = frequency of occurrence).

Specimen	Sample Site	Length	Width	Depth
1	6	103.3	59.2	75.5
2	6	87.2	53.0	62.5
3	8	85.0	52.0	62.5
4	8	123.2	72.9	92.6
5	12	114.9	72.7	81.1
6	12	97.3	57.5	74.6
7	12	80.7	50.7	58.4
8	14	75.3	53.4	59.5
9	14	123.2	68.7	89.7
10	16	128.9	73.6	93.5
11	18	86.2	55.5	65.8
12	19	94.3	61.1	68.9
13	19	132.0	75.0	98.8
14	33	119.5	73.3	84.8
15	33	97.1	61.4	76.0
16	33	85.7	55.3	64.8
17	34	87.9	53.6	60.4
18	37	93.6	56.6	69.0
19	42	109.2	72.0	75.4
20	45	91.0	58.2	67.0
21	46	128.6	72.7	89.2
22	47	84.6	54.2	63.6
23	SB2	97.0	61.2	67.8
24	SB2	75.4	47.1	67.5
25	SB2	80.8	56.9	60.4

Table 3. Length, width, and depth measurements (mm) for live *Potamilus capax*.

mm, depth 27.5 mm), and *Quadrula quadrula* (Site 18-19, length 21.7 mm, depth 15.4 mm) were collected during this survey.

Discussion

Mussel reproduction is occurring in the survey area (Floodway Miles 46.6 to 57.6). Most young specimens were found in ephemeral habitats associated with sand bars with receding water levels that had stranded young mussels. Recruitment since the dredging project was indicated for *Amblema plicata*, *Leptodea fragilis*, *Obliquaria reflexa*, *Potamilus capax*, *Quadrula pustulosa*, and *Q. quadrula*. The 48.3 mm long *Potamilus capax* specimen had a single “growth line” indicating that it was 1+ years of age at mortality. The specimen appeared to be recently deceased when examined.

Four sites were encountered that either possess concentrations of mussels (beds) or appear to be re-establishing substantial mussel concentrations. These sites include two deep “scour holes” below county road bridge structures (Sites 33 and 38) and Sites 18-19 and 42. Sites 33 and 38 were apparently not dredged because of their depth and proximity to bridge structures. Site 18-19 was located in a slight bendway along the right hand descending bank, and a house was located in close proximity to the river bank. The substrate at this site was composed of firm silt/sand with a shallow covering of fine silt, and the site had not been directly impacted by dredging. Site 42 appeared to have been dredged, but the current velocity in this bendway had been active in re-establishing substrate suitable for mussel habitation. Fine clay “pebbles” and firmly compacted sand provided habitat for scattered individuals of seven mussel species.

Literature Cited

- Ahlstedt, S.A. and J.J. Jenkinson. 1987. Distribution and abundance of *Potamilus capax* and other freshwater mussels in the St. Francis River system, Arkansas and Missouri. Tennessee Valley Authority, Division of Air and Water Resources, Knoxville, TN. Final Report for Memphis District, U.S. Army Corps of Engineers Contract No. PD-86-CO52. 67 p. + field notes.
- Ahlstedt, S.A. and J.J. Jenkinson. 1991. Distribution and abundance of *Potamilus capax* and other freshwater mussels in the St. Francis River System, Arkansas and Missouri, U.S.A. *Walkerana* 5(14):225-261.
- Bates, J.M. and S.D. Dennis. 1983. Mussel (naiad) survey - St. Francis, White and Cache rivers, Arkansas and Missouri. Final Report. Ecological Consultants, Inc., Ann Arbor, Michigan. Prepared for the Memphis District, U.S. Army Corps of Engineers. 87 pp., 5 appendices.
- Dennis, S.D. 1984. A recovery plan for the fat pocketbook pearly mussel *Potamilus* (= *Proptera*) *capax* (Green, 1832). U.S. Fish and Wildlife Service, Jackson, MS. 43 pp.
- Ecological Consultants, Inc. 1984. Handbook of the mussels of the St. Francis, White and Cache rivers, Arkansas and Missouri. Prepared for the Memphis District, U.S. Army Corps of Engineers, Project No. DACW66-78-C-0147. 62 pp. + Appen. A-B.
- Ecosearch, Inc. 1985. Mussel (naiad) study: St. Francis and White rivers Arkansas. Prepared for the Memphis District, U.S. Army Corps of Engineers, Project No. DAC-84-M-1666-R. 29 pp.
- Harris, J.L. 1986. Relocation of the fat pocketbook pearly mussel, *Potamilus capax* (Green), in the St. Francis River at Madison, St. Francis County, Arkansas. *Ark. Highway and Transport. rpt. and Ark. Game and Fish Comm.*, Little Rock. 14 pp.
- Harris, J.L. and M.E. Gordon. 1987. Distribution and status of rare and endangered mussels (Mollusca: Margaritiferidae, Unionidae) in Arkansas. *Proc. AR Acad. Sci.* 41:49-56.

- Jenkinson, J.J. 1989. Relocation of *Potamilus capax* from a 4-mile reach of the St. Francis Floodway in Arkansas. Tennessee Valley Authority, Water Resources, Aquatic Biology Department, Norris, TN. Final Report for Memphis District, U.S. Army Corps of Engineers Contract No. PD-88-CO44. 53 p.
- Jenkinson, J.J. and S.A. Ahlstedt. 1987. A search for additional populations of *Potamilus capax* in the St. Francis and Cache River watersheds, Arkansas and Missouri. Tennessee Valley Authority, Division of Air and Water Resources, Knoxville, TN. Final Report for Memphis District, U.S. Army Corps of Engineers Contract No. PD-87-CO43. 304 p.
- Koch, L.M. 1993. Status of fat pocketbook mussels (*Potamilus capax*) three years after re-introduction to the upper Mississippi River, Missouri. MO Dept. Conservation. 12 pp.
- Posey, W.R. II. In prep. Location, species composition, and community estimates for mussel beds in the St. Francis and Ouachita Rivers in Arkansas. M.S. thesis, Arkansas State University, Jonesboro.

Appendix A.
Quantitative Survey Sites
Field Data Sheets

Arkansas Freshwater Bivalves Field Data Sheet

Site St F-CC-1

Date 16 July 1995 County CROSS Quad Wittsburg
 Drainage St. Francis Substrate SAND Width 15-25 m
 Location St. Francis FLOODWAY ca. 0.5 km upstream of Copperas Creek.

	Live	Dead		Live	Dead
<i>Actinonaias ligamentina</i>			<i>Obliquaria reflexa</i>		
<i>Alasmidonta marginata</i>			<i>Obovaria jacksoniana</i>		
<i>Alasmidonta viridis</i>			<i>Obovaria olivaria</i>		
<i>Amblema plicata</i>			<i>Plectomerus dombeyanus</i>		
<i>Anodonta suborbiculata</i>			<i>Pleurobema coccineum</i>		
<i>Anodontoides ferussacianus</i>			<i>Pleurobema pyramidatum</i>		
<i>Arcidens confragosus</i>			<i>Potamilus alatus</i>		
<i>Arkansia wheeleri</i>			<i>Potamilus capax</i>		
<i>Cyclonaias tuberculata</i>			<i>Potamilus ohioensis</i>		
<i>Cyprogenia aberti</i>			<i>Potamilus purpuratus</i>		
<i>Cumberlandia monodonta</i>			<i>Ptychobranthus occidentalis</i>		
<i>Ellipsaria lineolata</i>			<i>Pyganodon grandis</i>		
<i>Elliptio dilatata</i>			<i>Quadrula apiculata</i>		
<i>Epioblasma curtisi</i>			<i>Quadrula cylindrica</i>		
<i>Epioblasma triquetra</i>			<i>Quadrula fragosa</i>		
<i>Epioblasma turgidula</i>			<i>Quadrula metanevra</i>		
<i>Fusconaia ebena</i>			<i>Quadrula nodulata</i>		
<i>Fusconaia flava</i>			<i>Quadrula pustulosa</i>		
<i>Fusconaia ozarkensis</i>			<i>Quadrula quadrula</i>		
<i>Lampsilis abrupta</i>			<i>Simpsonaias ambigua</i>		
<i>Lampsilis cardium</i>			<i>Strophitus undulatus</i>		
<i>Lampsilis hydiana</i>			<i>Toxolasma lividus</i>		
<i>Lampsilis ornata</i>			<i>Toxolasma parvus</i>		
<i>Lampsilis powelli</i>			<i>Toxolasma texasensis</i>		
<i>Lampsilis rafinesqueana</i>			<i>Tritogonia verrucosa</i>		
<i>Lampsilis reeveiana</i>			<i>Truncilla donaciformis</i>		
<i>Lampsilis satura</i>			<i>Truncilla truncata</i>		
<i>Lampsilis streckeri</i>			<i>Uniomerus declivus</i>		
<i>Lampsilis teres</i>			<i>Uniomerus tetralasmus</i>		
<i>Lasmigona costata</i>			<i>Utterbackia imbecillis</i>		
<i>Lasmigona complanata</i>			<i>Venustaconcha ellipsiformis</i>		
<i>Leptodea fragilis</i>			<i>Venustaconcha pleasi</i>		
<i>Leptodea leptodon</i>			<i>Villosa arkansasensis</i>		
<i>Ligumia recta</i>			<i>Villosa iris</i>		
<i>Ligumia subrostrata</i>			<i>Villosa lienosa</i>		
<i>Megalonaias nervosa</i>			<i>Corbicula fluminea</i>		

SW 1/4 NW 1/4 SEC 9; T7N; R4E J.L. Harris, J.T. Fleming

Current very swift, in bendway - rip rap along bank for protection - 3-4 m deep
No mussels found

Arkansas Freshwater Bivalves Field Data Sheet

Site StF-CC-2

Date 16 July 1995 County Cross Quad Wittsburg
 Drainage St. Francis Substrate clay/silt/sand Width 15-25 m
 Location St. Francis Floodway ca. 0.3km upstream of Copperas Creek.

	Live	Dead		Live	Dead
<i>Actinonaias ligamentina</i>			<i>Obliquaria reflexa</i>		
<i>Alasmidonta marginata</i>			<i>Obovaria jacksoniana</i>		
<i>Alasmidonta viridis</i>			<i>Obovaria olivaria</i>		
<i>Amblema plicata</i>			<i>Plectomerus dombeyanus</i>		
<i>Anodonta suborbiculata</i>			<i>Pleurobema coccineum</i>		
<i>Anodontoides ferussacianus</i>			<i>Pleurobema pyramidatum</i>		
<i>Arcidens confragosus</i>			<i>Potamilus alatus</i>		
<i>Arkansia wheeleri</i>			<i>Potamilus capax</i>		
<i>Cyclonaias tuberculata</i>			<i>Potamilus ohioensis</i>		
<i>Cyprogenia aberti</i>			<i>Potamilus purpuratus</i>		
<i>Cumberlandia monodonta</i>			<i>Ptychobranthus occidentalis</i>		
<i>Ellipsaria lineolata</i>			<i>Pyganodon grandis</i>		
<i>Elliptio dilatata</i>			<i>Quadrula apiculata</i>		
<i>Epioblasma curtisi</i>			<i>Quadrula cylindrica</i>		
<i>Epioblasma triquetra</i>			<i>Quadrula fragosa</i>		
<i>Epioblasma turgidula</i>			<i>Quadrula metanevra</i>		
<i>Fusconaia ebena</i>			<i>Quadrula nodulata</i>		
<i>Fusconaia flava</i>			<i>Quadrula pustulosa</i>		
<i>Fusconaia ozarkensis</i>			<i>Quadrula quadrula</i>		
<i>Lampsilis abrupta</i>			<i>Simpsonaias ambigua</i>		
<i>Lampsilis cardium</i>			<i>Strophitus undulatus</i>		
<i>Lampsilis hydiana</i>			<i>Toxolasma lividus</i>		
<i>Lampsilis ornata</i>			<i>Toxolasma parvus</i>		
<i>Lampsilis powelli</i>			<i>Toxolasma texasensis</i>		
<i>Lampsilis rafinesqueana</i>			<i>Tritogonia verrucosa</i>		
<i>Lampsilis reeveiana</i>			<i>Truncilla donaciformis</i>		
<i>Lampsilis satura</i>			<i>Truncilla truncata</i>		1
<i>Lampsilis streckeri</i>			<i>Uniomerus declivus</i>		
<i>Lampsilis teres</i>			<i>Uniomerus tetralasmus</i>		
<i>Lasmigona costata</i>			<i>Utterbackia imbecillis</i>		
<i>Lasmigona complanata</i>			<i>Venustaconcha ellipsiformis</i>		
<i>Leptodea fragilis</i>		1	<i>Venustaconcha pleasi</i>		
<i>Leptodea leptodon</i>			<i>Villosa arkansasensis</i>		
<i>Ligumia recta</i>			<i>Villosa iris</i>		
<i>Ligumia subrostrata</i>			<i>Villosa lienosa</i>		
<i>Megalonaias nervosa</i>			<i>Corbicula fluminea</i>		

NE 1/4 NE 1/4 sec 8; T7N; R4E J.L. Harris, J.T. Fleming
2-3 m deep ; current moderately swift

Arkansas Freshwater Bivalves Field Data Sheet

Site STF-CC-3Date 16 July 1995County CrossQuad WittsburgDrainage St. FrancisSubstrate sandWidth 15-25 m wideLocation St. Francis Floodway at confluence with Copperas Creek.

	Live	Dead		Live	Dead
<i>Actinonaias ligamentina</i>			<i>Obliquaria reflexa</i>		
<i>Alasmidonta marginata</i>			<i>Obovaria jacksoniana</i>		
<i>Alasmidonta viridis</i>			<i>Obovaria olivaria</i>		
<i>Amblema plicata</i>			<i>Plectomerus dombeyanus</i>		
<i>Anodonta suborbiculata</i>			<i>Pleurobema coccineum</i>		
<i>Anodontoides ferussacianus</i>			<i>Pleurobema pyramidatum</i>		
<i>Arcidens confragosus</i>			<i>Potamilus alatus</i>		
<i>Arkansia wheeleri</i>			<i>Potamilus capax</i>		
<i>Cyclonaias tuberculata</i>			<i>Potamilus ohioensis</i>		
<i>Cyprogenia aberti</i>			<i>Potamilus purpuratus</i>	2	
<i>Cumberlandia monodonta</i>			<i>Ptychobranthus occidentalis</i>		
<i>Ellipsaria lineolata</i>			<i>Pyganodon grandis</i>		
<i>Elliptio dilatata</i>			<i>Quadrula apiculata</i>		
<i>Epioblasma curtisi</i>			<i>Quadrula cylindrica</i>		
<i>Epioblasma triquetra</i>			<i>Quadrula fragosa</i>		
<i>Epioblasma turgidula</i>			<i>Quadrula metanevra</i>		
<i>Fusconaia ebena</i>			<i>Quadrula nodulata</i>		
<i>Fusconaia flava</i>			<i>Quadrula pustulosa</i>		
<i>Fusconaia ozarkensis</i>			<i>Quadrula quadrula</i>		
<i>Lampsilis abrupta</i>			<i>Simpsonaias ambigua</i>		
<i>Lampsilis cardium</i>			<i>Strophitus undulatus</i>		
<i>Lampsilis hydiana</i>			<i>Toxolasma lividus</i>		
<i>Lampsilis ornata</i>			<i>Toxolasma parvus</i>		
<i>Lampsilis powelli</i>			<i>Toxolasma texasensis</i>		
<i>Lampsilis rafinesqueana</i>			<i>Tritogonia verrucosa</i>		
<i>Lampsilis reeveiana</i>			<i>Truncilla donaciformis</i>		
<i>Lampsilis satura</i>			<i>Truncilla truncata</i>		
<i>Lampsilis streckeri</i>			<i>Uniomerus declivus</i>		
<i>Lampsilis teres</i>			<i>Uniomerus tetralasmus</i>		
<i>Lasmigona costata</i>			<i>Utterbackia imbecillis</i>		
<i>Lasmigona complanata</i>			<i>Venustaconcha ellipsiformis</i>		
<i>Leptodea fragilis</i>	1		<i>Venustaconcha pleasi</i>		
<i>Leptodea leptodon</i>			<i>Villosa arkansasensis</i>		
<i>Ligumia recta</i>			<i>Villosa iris</i>		
<i>Ligumia subrostrata</i>			<i>Villosa lienosa</i>		
<i>Megalonaias nervosa</i>			<i>Corbicula fluminea</i>		

SW 1/4 NE 1/4 SEC 8; T7N; R4E.

J.L. Harris, J.T. Fleming.

2-3 m deep ; current swift.

Arkansas Freshwater Bivalves Field Data Sheet

Site St.F-CC-4

Date 16 July 1995 County Cross Quad Wittsburg
 Drainage St. Francis Substrate Sand, clay at bank Width 15-25 m
 Location St. Francis Floodway ca. 0.3 Km downstream of Copperas Creek.

	Live	Dead		Live	Dead
<i>Actinonaias ligamentina</i>			<i>Obliquaria reflexa</i>		
<i>Alasmidonta marginata</i>			<i>Obovaria jacksoniana</i>		
<i>Alasmidonta viridis</i>			<i>Obovaria olivaria</i>		
<i>Amblema plicata</i>			<i>Plectomerus dombeyanus</i>		
<i>Anodonta suborbiculata</i>			<i>Pleurobema coccineum</i>		
<i>Anodontoides ferussacianus</i>			<i>Pleurobema pyramidatum</i>		
<i>Arcidens confragosus</i>			<i>Potamilus alatus</i>		
<i>Arkansia wheeleri</i>			<i>Potamilus capax</i>		1
<i>Cyclonaias tuberculata</i>			<i>Potamilus ohiensis</i>	1	
<i>Cyprogenia aberti</i>			<i>Potamilus purpuratus</i>		
<i>Cumberlandia monodonta</i>			<i>Ptychobranthus occidentalis</i>		
<i>Ellipsaria lineolata</i>			<i>Pyganodon grandis</i>		
<i>Elliptio dilatata</i>			<i>Quadrula apiculata</i>		
<i>Epioblasma curtisi</i>			<i>Quadrula cylindrica</i>		
<i>Epioblasma triquetra</i>			<i>Quadrula fragosa</i>		
<i>Epioblasma turgidula</i>			<i>Quadrula metanevra</i>		
<i>Fusconaia ebena</i>			<i>Quadrula nodulata</i>		
<i>Fusconaia flava</i>			<i>Quadrula pustulosa</i>		
<i>Fusconaia ozarkensis</i>			<i>Quadrula quadrula</i>		
<i>Lampsilis abrupta</i>			<i>Simpsonaias ambigua</i>		
<i>Lampsilis cardium</i>			<i>Strophitus undulatus</i>		
<i>Lampsilis hydiana</i>			<i>Toxolasma lividus</i>		
<i>Lampsilis ornata</i>			<i>Toxolasma parvus</i>		
<i>Lampsilis powelli</i>			<i>Toxolasma texasensis</i>		
<i>Lampsilis rafinesqueana</i>			<i>Tritogonia verrucosa</i>		
<i>Lampsilis reeveiana</i>			<i>Truncilla donaciformis</i>		
<i>Lampsilis satura</i>			<i>Truncilla truncata</i>		
<i>Lampsilis streckeri</i>			<i>Uniomerus declivus</i>		
<i>Lampsilis teres</i>			<i>Uniomerus tetralasmus</i>		
<i>Lasmigona costata</i>			<i>Utterbackia imbecillis</i>		
<i>Lasmigona complanata</i>			<i>Venustaconcha ellipsiformis</i>		
<i>Leptodea fragilis</i>		1	<i>Venustaconcha pleasi</i>		
<i>Leptodea leptodon</i>			<i>Villosa arkansasensis</i>		
<i>Ligumia recta</i>			<i>Villosa iris</i>		
<i>Ligumia subrostrata</i>			<i>Villosa lienosa</i>		
<i>Megalonaias nervosa</i>			<i>Corbicula fluminea</i>		

NW 1/4 SE 1/4 SEC 8; T7N; R4E J.L. Harris, J.T. Fleming
1-2 m deep; moderate current

Arkansas Freshwater Bivalves Field Data Sheet

Site STF-CC-5

Date 16 July 1995 County Cross Quad Willsburg
 Drainage St. Francis Substrate sand, clay at bank Width 20-30 m
 Location St. Francis Floodway ca. 0.5 km downstream of Copperas Creek.

	Live	Dead		Live	Dead
<i>Actinonaias ligamentina</i>			<i>Obliquaria reflexa</i>		
<i>Alasmidonta marginata</i>			<i>Obovaria jacksoniana</i>		
<i>Alasmidonta viridis</i>			<i>Obovaria olivaria</i>		
<i>Amblema plicata</i>			<i>Plectomerus dombeyanus</i>		
<i>Anodonta suborbiculata</i>			<i>Pleurobema coccineum</i>		
<i>Anodontoides ferussacianus</i>			<i>Pleurobema pyramidatum</i>		
<i>Arcidens confragosus</i>			<i>Potamilus alatus</i>		
<i>Arkansia wheeleri</i>			<i>Potamilus capax</i>		
<i>Cyclonaias tuberculata</i>			<i>Potamilus ohioensis</i>		
<i>Cyprogenia aberti</i>			<i>Potamilus purpuratus</i>		
<i>Cumberlandia monodonta</i>			<i>Ptychobranhus occidentalis</i>		
<i>Ellipsaria lineolata</i>			<i>Pyganodon grandis</i>		
<i>Elliptio dilatata</i>			<i>Quadrula apiculata</i>		
<i>Epioblasma curtisi</i>			<i>Quadrula cylindrica</i>		
<i>Epioblasma triquetra</i>			<i>Quadrula fragosa</i>		
<i>Epioblasma turgidula</i>			<i>Quadrula metanevra</i>		
<i>Fusconaia ebena</i>			<i>Quadrula nodulata</i>		
<i>Fusconaia flava</i>			<i>Quadrula pustulosa</i>	2	
<i>Fusconaia ozarkensis</i>			<i>Quadrula quadrula</i>		
<i>Lampsilis abrupta</i>			<i>Simpsonaias ambigua</i>		
<i>Lampsilis cardium</i>			<i>Strophitus undulatus</i>		
<i>Lampsilis hydiana</i>			<i>Toxolasma lividus</i>		
<i>Lampsilis ornata</i>			<i>Toxolasma parvus</i>		
<i>Lampsilis powelli</i>			<i>Toxolasma texasensis</i>		
<i>Lampsilis rafinesqueana</i>			<i>Tritogonia verrucosa</i>		
<i>Lampsilis reeveiana</i>			<i>Truncilla donaciformis</i>		
<i>Lampsilis satura</i>			<i>Truncilla truncata</i>		
<i>Lampsilis streckeri</i>			<i>Uniomerus declivus</i>		
<i>Lampsilis teres</i>			<i>Uniomerus tetralasmus</i>		
<i>Lasmigona costata</i>			<i>Utterbackia imbecillis</i>		
<i>Lasmigona complanata</i>			<i>Venustaconcha ellipsiformis</i>		
<i>Leptodea fragilis</i>			<i>Venustaconcha pleasi</i>		
<i>Leptodea leptodon</i>			<i>Villosa arkansasensis</i>		
<i>Ligumia recta</i>			<i>Villosa iris</i>		
<i>Ligumia subrostrata</i>			<i>Villosa lienosa</i>		
<i>Megalonaias nervosa</i>			<i>Corbicula fluminea</i>		

SW 1/4 SE 1/4 Sec 8; T7N; R4E J.L. Harris, J.T. Fleming

1-2 m deep ; moderate current

Arkansas Freshwater Bivalves Field Data Sheet

Site STF-CC-6

Date 16 July 1996 County Cross Quad Wittsburg
 Drainage St. Francis Substrate Sand, clay at bank Width 20-30 m
 Location St. Francis Floodway ca. 1.0 km downstream of Copperas Creek.

	Live	Dead		Live	Dead
<i>Actinonaias ligamentina</i>			<i>Obliquaria reflexa</i>		
<i>Alasmidonta marginata</i>			<i>Obovaria jacksoniana</i>		
<i>Alasmidonta viridis</i>			<i>Obovaria olivaria</i>		
<i>Amblema plicata</i>			<i>Plectomerus dombeyanus</i>		
<i>Anodonta suborbiculata</i>			<i>Pleurobema coccineum</i>		
<i>Anodontoides ferussacianus</i>			<i>Pleurobema pyramidatum</i>		
<i>Arcidens confragosus</i>			<i>Potamilus alatus</i>		
<i>Arkansia wheeleri</i>			<i>Potamilus capax</i>	2	1
<i>Cyclonaias tuberculata</i>			<i>Potamilus ohioensis</i>	1	
<i>Cyprogenia aberti</i>			<i>Potamilus purpuratus</i>		
<i>Cumberlandia monodonta</i>			<i>Ptychobranhus occidentalis</i>		
<i>Ellipsaria lineolata</i>			<i>Pyganodon grandis</i>		
<i>Elliptio dilatata</i>			<i>Quadrula apiculata</i>		
<i>Epioblasma curtisi</i>			<i>Quadrula cylindrica</i>		
<i>Epioblasma triquetra</i>			<i>Quadrula fragosa</i>		
<i>Epioblasma turgidula</i>			<i>Quadrula metanevra</i>		
<i>Fusconaia ebena</i>			<i>Quadrula nodulata</i>		
<i>Fusconaia flava</i>			<i>Quadrula pustulosa</i>		
<i>Fusconaia ozarkensis</i>			<i>Quadrula quadrula</i>	1	
<i>Lampsilis abrupta</i>			<i>Simpsonaias ambigua</i>		
<i>Lampsilis cardium</i>			<i>Strophitus undulatus</i>		
<i>Lampsilis hydiana</i>			<i>Toxolasma lividus</i>		
<i>Lampsilis ornata</i>			<i>Toxolasma parvus</i>		
<i>Lampsilis powelli</i>			<i>Toxolasma texasensis</i>		
<i>Lampsilis rafinesqueana</i>			<i>Tritogonia verrucosa</i>		
<i>Lampsilis reeveiana</i>			<i>Truncilla donaciformis</i>		
<i>Lampsilis satura</i>			<i>Truncilla truncata</i>		
<i>Lampsilis streckeri</i>			<i>Uniomerus declivus</i>		
<i>Lampsilis teres</i>		1	<i>Uniomerus tetralasmus</i>		
<i>Lasmigona costata</i>			<i>Utterbackia imbecillis</i>		
<i>Lasmigona complanata</i>			<i>Venustaconcha ellipsiformis</i>		
<i>Leptodea fragilis</i>	2		<i>Venustaconcha pleasi</i>		
<i>Leptodea leptodon</i>			<i>Villosa arkansasensis</i>		
<i>Ligumia recta</i>			<i>Villosa iris</i>		
<i>Ligumia subrostrata</i>			<i>Villosa lienosa</i>		
<i>Megalonaias nervosa</i>			<i>Corbicula fluminea</i>		

NE 1/4 NW 1/4 sec 17; T 7 N; R 4 E J.L. Harris, J.T. Fleming

1-2 m deep; moderate current Most mussels in silt/clay at edge of bank at sand-clay interface. Photos 22 and 23

Arkansas Freshwater Bivalves Field Data Sheet

Site SF-CC-7

Date 16 July 1995 County Cross Quad Wittsburg
 Drainage St. Francis Substrate sand/silt Width 25-30 m
 Location St. Francis Floodway ca. 1.4 km downstream of Copperas Creek.

	Live	Dead		Live	Dead
<i>Actinonaias ligamentina</i>			<i>Obliquaria reflexa</i>		
<i>Alasmidonta marginata</i>			<i>Obovaria jacksoniana</i>		
<i>Alasmidonta viridis</i>			<i>Obovaria olivaria</i>		
<i>Amblema plicata</i>			<i>Plectomerus dombeyanus</i>		
<i>Anodonta suborbiculata</i>			<i>Pleurobema coccineum</i>		
<i>Anodontoides ferussacianus</i>			<i>Pleurobema pyramidatum</i>		
<i>Arcidens confragosus</i>			<i>Potamilus alatus</i>		
<i>Arkansia wheeleri</i>			<i>Potamilus capax</i>		
<i>Cyclonaias tuberculata</i>			<i>Potamilus ohioensis</i>		
<i>Cyprogenia aberti</i>			<i>Potamilus purpuratus</i>		
<i>Cumberlandia monodonta</i>			<i>Ptychobranhus occidentalis</i>		
<i>Ellipsaria lineolata</i>			<i>Pyganodon grandis</i>		
<i>Elliptio dilatata</i>			<i>Quadrula apiculata</i>		
<i>Epioblasma curtisi</i>			<i>Quadrula cylindrica</i>		
<i>Epioblasma triquetra</i>			<i>Quadrula fragosa</i>		
<i>Epioblasma turgidula</i>			<i>Quadrula metanevra</i>		
<i>Fusconaia ebena</i>			<i>Quadrula nodulata</i>		
<i>Fusconaia flava</i>			<i>Quadrula pustulosa</i>		
<i>Fusconaia ozarkensis</i>			<i>Quadrula quadrula</i>		
<i>Lampsilis abrupta</i>			<i>Simpsonaias ambigua</i>		
<i>Lampsilis cardium</i>			<i>Strophitus undulatus</i>		
<i>Lampsilis hydiana</i>			<i>Toxolasma lividus</i>		
<i>Lampsilis ornata</i>			<i>Toxolasma parvus</i>		
<i>Lampsilis powelli</i>			<i>Toxolasma texasensis</i>		
<i>Lampsilis rafinesqueana</i>			<i>Tritogonia verrucosa</i>		
<i>Lampsilis reeveiana</i>			<i>Truncilla donaciformis</i>		
<i>Lampsilis satura</i>			<i>Truncilla truncata</i>		
<i>Lampsilis streckeri</i>			<i>Uniomerus declivus</i>		
<i>Lampsilis teres</i>			<i>Uniomerus tetralasmus</i>		
<i>Lasmigona costata</i>			<i>Utterbackia imbecillis</i>		
<i>Lasmigona complanata</i>			<i>Venustaconcha ellipsiformis</i>		
<i>Leptodea fragilis</i>	2		<i>Venustaconcha pleasi</i>		
<i>Leptodea leptodon</i>			<i>Villosa arkansasensis</i>		
<i>Ligumia recta</i>			<i>Villosa iris</i>		
<i>Ligumia subrostrata</i>			<i>Villosa lienosa</i>		
<i>Megalonaias nervosa</i>			<i>Corbicula fluminea</i>		

NE 1/4 SW 1/4 sec 17; T7N; R4E J.L. Harris, J.T. Fleming

1-2 m deep Fine silt (pudding consistency) silt on bank edge, sand in channel; moderate current.

Arkansas Freshwater Bivalves Field Data Sheet

Site STF-CC-8

Date 16 July 1995 County Cross Quad Wittsburg
 Drainage St. Francis Substrate Sand / Fine silt Width 25-35 m
 Location St. Francis Floodway ca. 1.6 Km downstream of Copperas Creek.

	Live	Dead		Live	Dead
<i>Actinonaias ligamentina</i>			<i>Obliquaria reflexa</i>		
<i>Alasmidonta marginata</i>			<i>Obovaria jacksoniana</i>		
<i>Alasmidonta viridis</i>			<i>Obovaria olivaria</i>		
<i>Amblema plicata</i>			<i>Plectomerus dombeyanus</i>		
<i>Anodonta suborbiculata</i>			<i>Pleurobema coccineum</i>		
<i>Anodontoides ferussacianus</i>			<i>Pleurobema pyramidatum</i>		
<i>Arcidens confragosus</i>			<i>Potamilus alatus</i>		
<i>Arkansia wheeleri</i>			<i>Potamilus capax</i>	2	
<i>Cyclonaias tuberculata</i>			<i>Potamilus ohioensis</i>		
<i>Cyprogenia aberti</i>			<i>Potamilus purpuratus</i>	1	
<i>Cumberlandia monodonta</i>			<i>Ptychobranhus occidentalis</i>		
<i>Ellipsaria lineolata</i>			<i>Pyganodon grandis</i>		
<i>Elliptio dilatata</i>			<i>Quadrula apiculata</i>		
<i>Epioblasma curtisi</i>			<i>Quadrula cylindrica</i>		
<i>Epioblasma triquetra</i>			<i>Quadrula fragosa</i>		
<i>Epioblasma turgidula</i>			<i>Quadrula metanevra</i>		
<i>Fusconaia ebena</i>			<i>Quadrula nodulata</i>		
<i>Fusconaia flava</i>			<i>Quadrula pustulosa</i>		
<i>Fusconaia ozarkensis</i>			<i>Quadrula quadrula</i>		
<i>Lampsilis abrupta</i>			<i>Simpsonaias ambigua</i>		
<i>Lampsilis cardium</i>			<i>Strophitus undulatus</i>		
<i>Lampsilis hydiana</i>			<i>Toxolasma lividus</i>		
<i>Lampsilis ornata</i>			<i>Toxolasma parvus</i>		
<i>Lampsilis powelli</i>			<i>Toxolasma texasensis</i>		
<i>Lampsilis rafinesqueana</i>			<i>Tritogonia verrucosa</i>		
<i>Lampsilis reeveiana</i>			<i>Truncilla donaciformis</i>		
<i>Lampsilis satura</i>			<i>Truncilla truncata</i>		
<i>Lampsilis streckeri</i>			<i>Uniomerus declivus</i>		
<i>Lampsilis teres</i>			<i>Uniomerus tetralasmus</i>		
<i>Lasmigona costata</i>			<i>Utterbackia imbecillis</i>		
<i>Lasmigona complanata</i>			<i>Venustaconcha ellipsiformis</i>		
<i>Leptodea fragilis</i>			<i>Venustaconcha pleasi</i>		
<i>Leptodea leptodon</i>			<i>Villosa arkansasensis</i>		
<i>Ligumia recta</i>			<i>Villosa iris</i>		
<i>Ligumia subrostrata</i>			<i>Villosa lienosa</i>		
<i>Megaionaias nervosa</i>			<i>Corbicula fluminea</i>		

NE 1/4 SW 1/4 sec 17; T7N; R4E J.L. Harris, J.T. Fleming

1 m deep; Fine silt along banks, sand in channel. moderate current.

Photos 24-25.

Arkansas Freshwater Bivalves Field Data Sheet

Site STF-CC-9

Date 16 July 1995 County Cross Quad Wittsburg
 Drainage St. Francis Substrate Sand Width 25 - 35 m
 Location St. Francis Floodway ca. 1.8 km downstream of Copperas Creek.

	Live	Dead		Live	Dead
<i>Actinonaias ligamentina</i>			<i>Obliquaria reflexa</i>		
<i>Alasmidonta marginata</i>			<i>Obovaria jacksoniana</i>		
<i>Alasmidonta viridis</i>			<i>Obovaria olivaria</i>		
<i>Amblema plicata</i>			<i>Plectomerus dombeyanus</i>		
<i>Anodonta suborbiculata</i>			<i>Pleurobema coccineum</i>		
<i>Anodontoides ferussacianus</i>			<i>Pleurobema pyramidatum</i>		
<i>Arcidens confragosus</i>			<i>Potamilus alatus</i>		
<i>Arkansia wheeleri</i>			<i>Potamilus capax</i>		
<i>Cyclonaias tuberculata</i>			<i>Potamilus ohioensis</i>		
<i>Cyprogenia aberti</i>			<i>Potamilus purpuratus</i>		
<i>Cumberlandia monodonta</i>			<i>Ptychobranhus occidentalis</i>		
<i>Ellipsaria lineolata</i>			<i>Pyganodon grandis</i>		
<i>Elliptio dilatata</i>			<i>Quadrula apiculata</i>		
<i>Epioblasma curtisi</i>			<i>Quadrula cylindrica</i>		
<i>Epioblasma triquetra</i>			<i>Quadrula fragosa</i>		
<i>Epioblasma turgidula</i>			<i>Quadrula metanevra</i>		
<i>Fusconaia ebena</i>			<i>Quadrula nodulata</i>		
<i>Fusconaia flava</i>			<i>Quadrula pustulosa</i>		
<i>Fusconaia ozarkensis</i>			<i>Quadrula quadrula</i>		
<i>Lampsilis abrupta</i>			<i>Simpsonaias ambigua</i>		
<i>Lampsilis cardium</i>			<i>Strophitus undulatus</i>		
<i>Lampsilis hydiana</i>			<i>Toxolasma lividus</i>		
<i>Lampsilis ornata</i>			<i>Toxolasma parvus</i>		
<i>Lampsilis powelli</i>			<i>Toxolasma texasensis</i>		
<i>Lampsilis rafinesqueana</i>			<i>Tritogonia verrucosa</i>		
<i>Lampsilis reeveiana</i>			<i>Truncilla donaciformis</i>		
<i>Lampsilis satura</i>			<i>Truncilla truncata</i>		
<i>Lampsilis streckeri</i>			<i>Uniomerus declivus</i>		
<i>Lampsilis teres</i>			<i>Uniomerus tetralasmus</i>		
<i>Lasmigona costata</i>			<i>Utterbackia imbecillis</i>		
<i>Lasmigona complanata</i>			<i>Venustaconcha ellipsiformis</i>		
<i>Leptodea fragilis</i>			<i>Venustaconcha pleasi</i>		
<i>Leptodea leptodon</i>			<i>Villosa arkansasensis</i>		
<i>Ligumia recta</i>			<i>Villosa iris</i>		
<i>Ligumia subrostrata</i>			<i>Villosa lienosa</i>		
<i>Megalonaias nervosa</i>			<i>Corbicula fluminea</i>		

SE 1/4 SW 1/4 SEC 17; T7N; R4E J.L. Harris, J.T. Fleming

2 m deep NO mussels

Arkansas Freshwater Bivalves Field Data Sheet

Site FF-CC-10

Date 16 July 1995 County Cross Quad W. Htsburg
 Drainage St. Francis Substrate sand Width 30-40 m
 Location St. Francis Floodway ca. 2.0 km downstream of Copperas Creek.

	Live	Dead		Live	Dead
<i>Actinonaias ligamentina</i>			<i>Obliquaria reflexa</i>		
<i>Alasmidonta marginata</i>			<i>Obovaria jacksoniana</i>		
<i>Alasmidonta viridis</i>			<i>Obovaria olivaria</i>		
<i>Amblema plicata</i>			<i>Plectomerus dombeyanus</i>		
<i>Anodonta suborbiculata</i>			<i>Pleurobema coccineum</i>		
<i>Anodontoides ferussacianus</i>			<i>Pleurobema pyramidatum</i>		
<i>Arcidens confragosus</i>			<i>Potamilus alatus</i>		
<i>Arkansia wheeleri</i>			<i>Potamilus capax</i>		
<i>Cyclonaias tuberculata</i>			<i>Potamilus ohioensis</i>		
<i>Cyprogenia aberti</i>			<i>Potamilus purpuratus</i>		
<i>Cumberlandia monodonta</i>			<i>Ptychobranhus occidentalis</i>		
<i>Ellipsaria lineolata</i>			<i>Pyganodon grandis</i>		
<i>Elliptio dilatata</i>			<i>Quadrula apiculata</i>		
<i>Epioblasma curtisi</i>			<i>Quadrula cylindrica</i>		
<i>Epioblasma triquetra</i>			<i>Quadrula fragosa</i>		
<i>Epioblasma turgidula</i>			<i>Quadrula metanevra</i>		
<i>Fusconaia ebena</i>			<i>Quadrula nodulata</i>		
<i>Fusconaia flava</i>			<i>Quadrula pustulosa</i>		
<i>Fusconaia ozarkensis</i>			<i>Quadrula quadrula</i>		
<i>Lampsilis abrupta</i>			<i>Simpsonaias ambigua</i>		
<i>Lampsilis cardium</i>			<i>Strophitus undulatus</i>		
<i>Lampsilis hydiana</i>			<i>Toxolasma lividus</i>		
<i>Lampsilis ornata</i>			<i>Toxolasma parvus</i>		
<i>Lampsilis powelli</i>			<i>Toxolasma texasensis</i>		
<i>Lampsilis rafinesqueana</i>			<i>Tritogonia verrucosa</i>		
<i>Lampsilis reeveiana</i>			<i>Truncilla donaciformis</i>		
<i>Lampsilis satura</i>			<i>Truncilla truncata</i>		
<i>Lampsilis streckeri</i>			<i>Uniomerus declivus</i>		
<i>Lampsilis teres</i>			<i>Uniomerus tetralasmus</i>		
<i>Lasmigona costata</i>			<i>Utterbackia imbecillis</i>		
<i>Lasmigona complanata</i>			<i>Venustaconcha ellipsiformis</i>		
<i>Leptodea fragilis</i>			<i>Venustaconcha pleasi</i>		
<i>Leptodea leptodon</i>			<i>Villosa arkansasensis</i>		
<i>Ligumia recta</i>			<i>Villosa iris</i>		
<i>Ligumia subrostrata</i>			<i>Villosa lienosa</i>		
<i>Megalonaias nervosa</i>			<i>Corbicula fluminea</i>		

N 1/2 sec 20; T7N; R4E. J.L. Harris, J.T. Fleming
1.5 - 2.0 m deep. Bare cut banks. No mussels

Arkansas Freshwater Bivalves Field Data Sheet

Site StF-CC-11

Date 16 July 1995 County Cross Quad W. Hsburg
 Drainage St. Francis Substrate sand Width 30-40 m
 Location St. Francis Floodway ca. 2.1 Km downstream of Copperas Creek.

	Live	Dead		Live	Dead
<i>Actinonaias ligamentina</i>			<i>Obliquaria reflexa</i>		
<i>Alasmidonta marginata</i>			<i>Obovaria jacksoniana</i>		
<i>Alasmidonta viridis</i>			<i>Obovaria olivaria</i>		
<i>Amblema plicata</i>			<i>Plectomerus dombeyanus</i>		
<i>Anodonta suborbiculata</i>			<i>Pleurobema coccineum</i>		
<i>Anodontoides ferussacianus</i>			<i>Pleurobema pyramidatum</i>		
<i>Arcidens confragosus</i>			<i>Potamilus alatus</i>		
<i>Arkansia wheeleri</i>			<i>Potamilus capax</i>		
<i>Cyclonaias tuberculata</i>			<i>Potamilus ohiensis</i>		
<i>Cyprogenia aberti</i>			<i>Potamilus purpuratus</i>		
<i>Cumberlandia monodonta</i>			<i>Ptychobranthus occidentalis</i>		
<i>Ellipsaria lineolata</i>			<i>Pyganodon grandis</i>		
<i>Elliptio dilatata</i>			<i>Quadrula apiculata</i>		
<i>Epioblasma curtisi</i>			<i>Quadrula cylindrica</i>		
<i>Epioblasma triquetra</i>			<i>Quadrula fragosa</i>		
<i>Epioblasma turgidula</i>			<i>Quadrula metanevra</i>		
<i>Fusconaia ebena</i>			<i>Quadrula nodulata</i>		
<i>Fusconaia flava</i>			<i>Quadrula pustulosa</i>		
<i>Fusconaia ozarkensis</i>			<i>Quadrula quadrula</i>		
<i>Lampsilis abrupta</i>			<i>Simpsonaias ambigua</i>		
<i>Lampsilis cardium</i>			<i>Strophitus undulatus</i>		
<i>Lampsilis hydiana</i>			<i>Toxolasma lividus</i>		
<i>Lampsilis ornata</i>			<i>Toxolasma parvus</i>		
<i>Lampsilis powelli</i>			<i>Toxolasma texasensis</i>		
<i>Lampsilis rafinesqueana</i>			<i>Tritogonia verrucosa</i>		
<i>Lampsilis reeveiana</i>			<i>Truncilla donaciformis</i>		
<i>Lampsilis satura</i>			<i>Truncilla truncata</i>		
<i>Lampsilis streckeri</i>			<i>Uniomerus declivus</i>		
<i>Lampsilis teres</i>			<i>Uniomerus tetralasmus</i>		
<i>Lasmigona costata</i>			<i>Utterbackia imbecillis</i>		
<i>Lasmigona complanata</i>			<i>Venustaconcha ellipsiformis</i>		
<i>Leptodea fragilis</i>			<i>Venustaconcha pleasi</i>		
<i>Leptodea leptodon</i>			<i>Villosa arkansasensis</i>		
<i>Ligumia recta</i>			<i>Villosa iris</i>		
<i>Ligumia subrostrata</i>			<i>Villosa lienosa</i>		
<i>Megalonaias nervosa</i>			<i>Corbicula fluminea</i>		

N 1/2 sec 20; T7N; R4E J.L. Harris, J.T. Fleming.

0.5-1.0 m deep NO SHELLS

Arkansas Freshwater Bivalves Field Data Sheet

Site SF-CC-12

Date 16 July 1995 County Cross Quad Wittsburg
 Drainage St. Francis Substrate sand/clay Width 30-40 m
 Location St. Francis Floodway ca. 2.8 km downstream of Copperas Creek.

	Live	Dead		Live	Dead
<i>Actinonaias ligamentina</i>			<i>Obliquaria reflexa</i>		
<i>Alasmidonta marginata</i>			<i>Obovaria jacksoniana</i>		
<i>Alasmidonta viridis</i>			<i>Obovaria olivaria</i>		
<i>Amblema plicata</i>			<i>Plectomerus dombeyanus</i>		
<i>Anodonta suborbiculata</i>			<i>Pleurobema coccineum</i>		
<i>Anodontoides ferussacianus</i>			<i>Pleurobema pyramidatum</i>		
<i>Arcidens confragosus</i>			<i>Potamilus alatus</i>		
<i>Arkansia wheeleri</i>			<i>Potamilus capax</i>	3	
<i>Cyclonaias tuberculata</i>			<i>Potamilus ohioensis</i>	1	
<i>Cyprogenia aberti</i>			<i>Potamilus purpuratus</i>		
<i>Cumberlandia monodonta</i>			<i>Ptychobranthus occidentalis</i>		
<i>Ellipsaria lineolata</i>			<i>Pyganodon grandis</i>		
<i>Elliptio dilatata</i>			<i>Quadrula apiculata</i>		
<i>Epioblasma curtisi</i>			<i>Quadrula cylindrica</i>		
<i>Epioblasma triquetra</i>			<i>Quadrula fragosa</i>		
<i>Epioblasma turgidula</i>			<i>Quadrula metanevra</i>		
<i>Fusconaia ebena</i>			<i>Quadrula nodulata</i>		
<i>Fusconaia flava</i>			<i>Quadrula pustulosa</i>		
<i>Fusconaia ozarkensis</i>			<i>Quadrula quadrula</i>		
<i>Lampsilis abrupta</i>			<i>Simpsonaias ambigua</i>		
<i>Lampsilis cardium</i>			<i>Strophitus undulatus</i>		
<i>Lampsilis hydiana</i>			<i>Toxolasma lividus</i>		
<i>Lampsilis ornata</i>			<i>Toxolasma parvus</i>		
<i>Lampsilis powelli</i>			<i>Toxolasma texasensis</i>		
<i>Lampsilis rafinesqueana</i>			<i>Tritogonia verrucosa</i>		
<i>Lampsilis reeveiana</i>			<i>Truncilla donaciformis</i>		
<i>Lampsilis satura</i>			<i>Truncilla truncata</i>		
<i>Lampsilis streckeri</i>			<i>Uniomerus declivus</i>		
<i>Lampsilis teres</i>			<i>Uniomerus tetralasmus</i>		
<i>Lasmigona costata</i>			<i>Utterbackia imbecillis</i>		
<i>Lasmigona complanata</i>	1		<i>Venustaconcha ellipsiformis</i>		
<i>Leptodea fragilis</i>	2		<i>Venustaconcha pleasi</i>		
<i>Leptodea leptodon</i>			<i>Villosa arkansasensis</i>		
<i>Ligumia recta</i>			<i>Villosa iris</i>		
<i>Ligumia subrostrata</i>			<i>Villosa lienosa</i>		
<i>Megalonaias nervosa</i>			<i>Corbicula fluminea</i>		

N 1/2 Sec 20; T7N; R4E J.L. Harris, J.T. Fleming

2-3 m deep; moderate current. Photos 26; 1 & 2 new roll

Arkansas Freshwater Bivalves Field Data Sheet

Site StF-CC-13

Date 16 July 1995 County Cross Quad Wittsburg
 Drainage St. Francis Substrate sand/clay Width 30-40 m
 Location St. Francis Floodway ca. 3.0 km downstream of Copperas Creek

	Live	Dead		Live	Dead
<i>Actinonaias ligamentina</i>			<i>Obliquaria reflexa</i>	1	
<i>Alasmidonta marginata</i>			<i>Obovaria jacksoniana</i>		
<i>Alasmidonta viridis</i>			<i>Obovaria olivaria</i>		
<i>Amblema plicata</i>			<i>Plectomerus dombeyanus</i>		
<i>Anodonta suborbiculata</i>			<i>Pleurobema coccineum</i>		
<i>Anodontoides ferussacianus</i>			<i>Pleurobema pyramidatum</i>		
<i>Arcidens confragosus</i>			<i>Potamilus alatus</i>		
<i>Arkansia wheeleri</i>			<i>Potamilus capax</i>		
<i>Cyclonaias tuberculata</i>			<i>Potamilus ohioensis</i>	1	
<i>Cyprogenia aberti</i>			<i>Potamilus purpuratus</i>	1	
<i>Cumberlandia monodonta</i>			<i>Ptychobranhus occidentalis</i>		
<i>Ellipsaria lineolata</i>			<i>Pyganodon grandis</i>		
<i>Elliptio dilatata</i>			<i>Quadrula apiculata</i>		
<i>Epioblasma curtisi</i>			<i>Quadrula cylindrica</i>		
<i>Epioblasma triquetra</i>			<i>Quadrula fragosa</i>		
<i>Epioblasma turgidula</i>			<i>Quadrula metanevra</i>		
<i>Fusconaia ebena</i>			<i>Quadrula nodulata</i>	1	
<i>Fusconaia flava</i>			<i>Quadrula pustulosa</i>		
<i>Fusconaia ozarkensis</i>			<i>Quadrula quadrula</i>		
<i>Lampsilis abrupta</i>			<i>Simpsonaias ambigua</i>		
<i>Lampsilis cardium</i>			<i>Strophitus undulatus</i>		
<i>Lampsilis hydiana</i>			<i>Toxolasma lividus</i>		
<i>Lampsilis ornata</i>			<i>Toxolasma parvus</i>		
<i>Lampsilis powelli</i>			<i>Toxolasma texasensis</i>		
<i>Lampsilis rafinesqueana</i>			<i>Tritogonia verrucosa</i>		
<i>Lampsilis reeveiana</i>			<i>Truncilla donaciformis</i>		
<i>Lampsilis satura</i>			<i>Truncilla truncata</i>		
<i>Lampsilis streckeri</i>			<i>Uniomerus declivus</i>		
<i>Lampsilis teres</i>			<i>Uniomerus tetralasmus</i>		
<i>Lasmigona costata</i>			<i>Utterbackia imbecillis</i>		
<i>Lasmigona complanata</i>	1		<i>Venustaconcha ellipsiformis</i>		
<i>Leptodea fragilis</i>	2		<i>Venustaconcha pleasi</i>		
<i>Leptodea leptodon</i>			<i>Villosa arkansasensis</i>		
<i>Ligumia recta</i>			<i>Villosa iris</i>		
<i>Ligumia subrostrata</i>			<i>Villosa lienosa</i>		
<i>Megalonaias nervosa</i>			<i>Corbicula fluminea</i>		

mid SEC 20; T7N; R4E. J.L. Harris, J.T. Fleming

2-3 m *Q. nodulata* - 34.0 mm, *Obliquaria* - 19.4 mm

Arkansas Freshwater Bivalves Field Data Sheet

Site STF-CC-14

Date 16 July 1995 County Cross Quad Wittsburg
 Drainage St. Francis Substrate silt/clay/sand Width 25-30m
 Location St. Francis Floodway ca. 3.2 km downstream of Copperas Creek.

	Live	Dead		Live	Dead
<i>Actinonaias ligamentina</i>			<i>Obliquaria reflexa</i>		
<i>Alasmidonta marginata</i>			<i>Obovaria jacksoniana</i>		
<i>Alasmidonta viridis</i>			<i>Obovaria olivaria</i>		
<i>Amblema plicata</i>			<i>Plectomerus dombeyanus</i>		
<i>Anodonta suborbiculata</i>			<i>Pleurobema coccineum</i>		
<i>Anodontoides ferussacianus</i>			<i>Pleurobema pyramidatum</i>		
<i>Arcidens confragosus</i>			<i>Potamilus alatus</i>		
<i>Arkansia wheeleri</i>			<i>Potamilus capax</i>	2	
<i>Cyclonaias tuberculata</i>			<i>Potamilus ohiensis</i>	3	
<i>Cyprogenia aberti</i>			<i>Potamilus purpuratus</i>		
<i>Cumberlandia monodonta</i>			<i>Ptychobranthus occidentalis</i>		
<i>Ellipsaria lineolata</i>			<i>Pyganodon grandis</i>		
<i>Elliptio dilatata</i>			<i>Quadrula apiculata</i>		
<i>Epioblasma curtisi</i>			<i>Quadrula cylindrica</i>		
<i>Epioblasma triquetra</i>			<i>Quadrula fragosa</i>		
<i>Epioblasma turgidula</i>			<i>Quadrula metanevra</i>		
<i>Fusconaia ebena</i>			<i>Quadrula nodulata</i>		
<i>Fusconaia flava</i>			<i>Quadrula pustulosa</i>		
<i>Fusconaia ozarkensis</i>			<i>Quadrula quadrula</i>		
<i>Lampsilis abrupta</i>			<i>Simpsonaias ambigua</i>		
<i>Lampsilis cardium</i>			<i>Strophitus undulatus</i>		
<i>Lampsilis hydiana</i>			<i>Toxolasma lividus</i>		
<i>Lampsilis ornata</i>			<i>Toxolasma parvus</i>		
<i>Lampsilis powelli</i>			<i>Toxolasma texasensis</i>		
<i>Lampsilis rafinesqueana</i>			<i>Tritogonia verrucosa</i>		
<i>Lampsilis reeveiana</i>			<i>Truncilla donaciformis</i>		
<i>Lampsilis satura</i>			<i>Truncilla truncata</i>		
<i>Lampsilis streckeri</i>			<i>Uniomerus declivus</i>		
<i>Lampsilis teres</i>			<i>Uniomerus tetralasmus</i>		
<i>Lasmigona costata</i>			<i>Utterbackia imbecillis</i>		
<i>Lasmigona complanata</i>	1		<i>Venustaconcha ellipsiformis</i>		
<i>Leptodea fragilis</i>	1		<i>Venustaconcha pleasi</i>		
<i>Leptodea leptodon</i>			<i>Villosa arkansasensis</i>		
<i>Ligumia recta</i>			<i>Villosa iris</i>		
<i>Ligumia subrostrata</i>			<i>Villosa lienosa</i>		
<i>Megalonaias nervosa</i>			<i>Corbicula fluminea</i>		

5 1/2 SEC 20; T 7N; R 4E J.L. Harris, J.T. Fleming
3-4 m deep 1 meter wide band of silt between clay on bank and
sand toward mid channel

Arkansas Freshwater Bivalves Field Data Sheet

Site SF-CC-15

Date 16 July 1995 County Cross Quad Wittsburg
 Drainage St. Francis Substrate sand/clay Width 25-30 m
 Location St. Francis Floodway ca. 3.4 Km downstream of Copperas Creek.

	Live	Dead		Live	Dead
<i>Actinonaias ligamentina</i>			<i>Obliquaria reflexa</i>		
<i>Alasmidonta marginata</i>			<i>Obovaria jacksoniana</i>		
<i>Alasmidonta viridis</i>			<i>Obovaria olivaria</i>		
<i>Amblema plicata</i>			<i>Plectomerus dombeyanus</i>		
<i>Anodonta suborbiculata</i>			<i>Pleurobema coccineum</i>		
<i>Anodontoides ferussacianus</i>			<i>Pleurobema pyramidatum</i>		
<i>Arcidens confragosus</i>			<i>Potamilus alatus</i>		
<i>Arkansia wheeleri</i>			<i>Potamilus capax</i>		
<i>Cyclonaias tuberculata</i>			<i>Potamilus ohiensis</i>	2	
<i>Cyprogenia aberti</i>			<i>Potamilus purpuratus</i>	1	
<i>Cumberlandia monodonta</i>			<i>Ptychobranthus occidentalis</i>		
<i>Ellipsaria lineolata</i>			<i>Pyganodon grandis</i>		
<i>Elliptio dilatata</i>			<i>Quadrula apiculata</i>		
<i>Epioblasma curtisi</i>			<i>Quadrula cylindrica</i>		
<i>Epioblasma triquetra</i>			<i>Quadrula fragosa</i>		
<i>Epioblasma turgidula</i>			<i>Quadrula metanevra</i>		
<i>Fusconaia ebena</i>			<i>Quadrula nodulata</i>	1	
<i>Fusconaia flava</i>			<i>Quadrula pustulosa</i>		
<i>Fusconaia ozarkensis</i>			<i>Quadrula quadrula</i>		
<i>Lampsilis abrupta</i>			<i>Simpsonaias ambigua</i>		
<i>Lampsilis cardium</i>			<i>Strophitus undulatus</i>		
<i>Lampsilis hydiana</i>			<i>Toxolasma lividus</i>		
<i>Lampsilis ornata</i>			<i>Toxolasma parvus</i>		
<i>Lampsilis powelli</i>			<i>Toxolasma texasensis</i>		
<i>Lampsilis rafinesqueana</i>			<i>Tritogonia verrucosa</i>		
<i>Lampsilis reeveiana</i>			<i>Truncilla donaciformis</i>		
<i>Lampsilis satura</i>			<i>Truncilla truncata</i>		
<i>Lampsilis streckeri</i>			<i>Uniomerus declivus</i>		
<i>Lampsilis teres</i>			<i>Uniomerus tetralasmus</i>		
<i>Lasmigona costata</i>			<i>Utterbackia imbecillis</i>		
<i>Lasmigona complanata</i>			<i>Venustaconcha ellipsiformis</i>		
<i>Leptodea fragilis</i>			<i>Venustaconcha pleasi</i>		
<i>Leptodea leptodon</i>			<i>Villosa arkansasensis</i>		
<i>Ligumia recta</i>			<i>Villosa iris</i>		
<i>Ligumia subrostrata</i>			<i>Villosa lienosa</i>		
<i>Megalonaias nervosa</i>			<i>Corbicula fluminea</i>		

S 1/2 sec 20; T7N; R4E J.L. Harris, J.T. Fleming

3-4 m deep narrow clay seam at base of bank w/ mussels -
rest sand current velocity moderate

Arkansas Freshwater Bivalves Field Data Sheet

Site STF-CC-16

Date 16 July 1996 County Cross Quad Wittsburg
 Drainage St. Francis Substrate sand/gravel Width 25-30 m
 Location St. Francis Floodway ca. 3.6 km downstream of Copperas Creek.

	Live	Dead		Live	Dead
<i>Actinonaias ligamentina</i>			<i>Obliquaria reflexa</i>		
<i>Alasmidonta marginata</i>			<i>Obovaria jacksoniana</i>		
<i>Alasmidonta viridis</i>			<i>Obovaria olivaria</i>		
<i>Amblema plicata</i>	1		<i>Plectomerus dombeyanus</i>		
<i>Anodonta suborbiculata</i>			<i>Pleurobema coccineum</i>		
<i>Anodontoides ferussacianus</i>			<i>Pleurobema pyramidatum</i>		
<i>Arcidens confragosus</i>			<i>Potamilus alatus</i>		
<i>Arkansia wheeleri</i>			<i>Potamilus capax</i>	1	
<i>Cyclonaias tuberculata</i>			<i>Potamilus ohiensis</i>	1	
<i>Cyprogenia aberti</i>			<i>Potamilus purpuratus</i>	2	
<i>Cumberlandia monodonta</i>			<i>Ptychobranthus occidentalis</i>		
<i>Ellipsaria lineolata</i>			<i>Pyganodon grandis</i>		
<i>Elliptio dilatata</i>			<i>Quadrula apiculata</i>		
<i>Epioblasma curtisi</i>			<i>Quadrula cylindrica</i>		
<i>Epioblasma triquetra</i>			<i>Quadrula fragosa</i>		
<i>Epioblasma turgidula</i>			<i>Quadrula metanevra</i>		
<i>Fusconaia ebena</i>			<i>Quadrula nodulata</i>		
<i>Fusconaia flava</i>			<i>Quadrula pustulosa</i>		
<i>Fusconaia ozarkensis</i>			<i>Quadrula quadrula</i>	1	
<i>Lampsilis abrupta</i>			<i>Simpsonaias ambigua</i>		
<i>Lampsilis cardium</i>			<i>Strophitus undulatus</i>		
<i>Lampsilis hydiana</i>			<i>Toxolasma lividus</i>		
<i>Lampsilis ornata</i>			<i>Toxolasma parvus</i>		
<i>Lampsilis powelli</i>			<i>Toxolasma texasensis</i>		
<i>Lampsilis rafinesqueana</i>			<i>Tritogonia verrucosa</i>		
<i>Lampsilis reeveiana</i>			<i>Truncilla donaciformis</i>		
<i>Lampsilis satura</i>			<i>Truncilla truncata</i>		
<i>Lampsilis streckeri</i>			<i>Uniomerus declivus</i>		
<i>Lampsilis teres</i>	1		<i>Uniomerus tetralasmus</i>		
<i>Lasmigona costata</i>			<i>Utterbackia imbecillis</i>		
<i>Lasmigona complanata</i>	1		<i>Venustaconcha ellipsiformis</i>		
<i>Leptodea fragilis</i>	3		<i>Venustaconcha pleasi</i>		
<i>Leptodea leptodon</i>			<i>Villosa arkansasensis</i>		
<i>Ligumia recta</i>			<i>Villosa iris</i>		
<i>Ligumia subrostrata</i>			<i>Villosa lienosa</i>		
<i>Megalonaias nervosa</i>			<i>Corbicula fluminea</i>		

s 1/2 sec 20; T7N; R4E J.L. Harris, J.T. Fleming

2-3 m deep narrow gravel seam (1 m wide) along bank. Very

compacted. Current velocity moderate *A. plicata* L- 44.1 mm; D- 31.9 mm 6+ yrs old

Arkansas Freshwater Bivalves Field Data Sheet

Site SF-CC-17

Date 17 July 1996 County Cross Quad Wittsburg
 Drainage St. Francis Substrate gravel/sand Width 25-30m
 Location St. Francis Floodway ca. 3.7 km downstream of Copperas Creek.

	Live	Dead		Live	Dead
<i>Actinonaias ligamentina</i>			<i>Obliquaria reflexa</i>		
<i>Alasmidonta marginata</i>			<i>Obovaria jacksoniana</i>		
<i>Alasmidonta viridis</i>			<i>Obovaria olivaria</i>		
<i>Amblema plicata</i>	1		<i>Plectomerus dombeyanus</i>		
<i>Anodonta suborbiculata</i>			<i>Pleurobema coccineum</i>		
<i>Anodontoides ferussacianus</i>			<i>Pleurobema pyramidatum</i>		
<i>Arcidens confragosus</i>			<i>Potamilus alatus</i>		
<i>Arkansia wheeleri</i>			<i>Potamilus capax</i>		
<i>Cyclonaias tuberculata</i>			<i>Potamilus ohioensis</i>		
<i>Cyprogenia aberti</i>			<i>Potamilus purpuratus</i>	1	
<i>Cumberlandia monodonta</i>			<i>Ptychobranhus occidentalis</i>		
<i>Ellipsaria lineolata</i>			<i>Pyganodon grandis</i>		
<i>Elliptio dilatata</i>			<i>Quadrula apiculata</i>		
<i>Epioblasma curtisi</i>			<i>Quadrula cylindrica</i>		
<i>Epioblasma triquetra</i>			<i>Quadrula fragosa</i>		
<i>Epioblasma turgidula</i>			<i>Quadrula metanevra</i>		
<i>Fusconaia ebena</i>			<i>Quadrula nodulata</i>		
<i>Fusconaia flava</i>			<i>Quadrula pustulosa</i>		
<i>Fusconaia ozarkensis</i>			<i>Quadrula quadrula</i>		
<i>Lampsilis abrupta</i>			<i>Simpsonaias ambigua</i>		
<i>Lampsilis cardium</i>			<i>Strophitus undulatus</i>		
<i>Lampsilis hydiana</i>			<i>Toxolasma lividus</i>		
<i>Lampsilis ornata</i>			<i>Toxolasma parvus</i>		
<i>Lampsilis powelli</i>			<i>Toxolasma texasensis</i>		
<i>Lampsilis rafinesqueana</i>			<i>Tritogonia verrucosa</i>		
<i>Lampsilis reeveiana</i>			<i>Truncilla donaciformis</i>	1	
<i>Lampsilis satura</i>			<i>Truncilla truncata</i>		
<i>Lampsilis streckeri</i>			<i>Uniomerus declivus</i>		
<i>Lampsilis teres</i>			<i>Uniomerus tetralasmus</i>		
<i>Lasmigona costata</i>			<i>Utterbackia imbecillis</i>		
<i>Lasmigona complanata</i>			<i>Venustaconcha ellipsiformis</i>		
<i>Leptodea fragilis</i>	2		<i>Venustaconcha pleasi</i>		
<i>Leptodea leptodon</i>			<i>Villosa arkansasensis</i>		
<i>Ligumia recta</i>			<i>Villosa iris</i>		
<i>Ligumia subrostrata</i>			<i>Villosa lienosa</i>		
<i>Megalonaias nervosa</i>			<i>Corbicula fluminea</i>		

S $\frac{1}{2}$ sec 20; T7N; R4E. J.L. Harris, J.T. Fleming. Six (6) m² quadrat samples
 in gravel seam; 2-3 m deep; moderate velocity; Quad 1 - *A. plicata* L54.1mm, D34.0m, W27.8mm
 Q2 - no mussels; Q3 - *T. donaciformis* L34.7, D24.8, W17.0; *L. fragilis* L82.6, D50.8, W31.5;
 Q4 - no mussels; Q5 *P. purpuratus* L126.8, D84.2, W56.2; Q6 *L. fragilis* L10.1mm

Arkansas Freshwater Bivalves Field Data Sheet

Site STF-CC-18

Date 17 July 1995 County Cross Quad Willsburg
 Drainage St. Francis Substrate mud/fine silt Width 25-30
 Location St. Francis Floodway ca. 3.9 Km downstream of Copperas Creek

	Live	Dead		Live	Dead
<i>Actinonaias ligamentina</i>			<i>Obliquaria reflexa</i>		1
<i>Alasmidonta marginata</i>			<i>Obovaria jacksoniana</i>		
<i>Alasmidonta viridis</i>			<i>Obovaria olivaria</i>		
<i>Amblema plicata</i>	17	3	<i>Plectomerus dombeyanus</i>		
<i>Anodonta suborbiculata</i>			<i>Pleurobema coccineum</i>		
<i>Anodontoides ferussacianus</i>			<i>Pleurobema pyramidatum</i>		
<i>Arcidens confragosus</i>			<i>Potamilus alatus</i>		
<i>Arkansia wheeleri</i>			<i>Potamilus capax</i>	1	
<i>Cyclonaias tuberculata</i>			<i>Potamilus ohiensis</i>	2	
<i>Cyprogenia aberti</i>			<i>Potamilus purpuratus</i>	2	
<i>Cumberlandia monodonta</i>			<i>Ptychobranthus occidentalis</i>		
<i>Ellipsaria lineolata</i>			<i>Pyganodon grandis</i>		
<i>Elliptio dilatata</i>			<i>Quadrula apiculata</i>		
<i>Epioblasma curtisi</i>			<i>Quadrula cylindrica</i>		
<i>Epioblasma triquetra</i>			<i>Quadrula fragosa</i>		
<i>Epioblasma turgidula</i>			<i>Quadrula metanevra</i>		
<i>Fusconaia ebena</i>			<i>Quadrula nodulata</i>		
<i>Fusconaia flava</i>			<i>Quadrula pustulosa</i>	2	
<i>Fusconaia ozarkensis</i>			<i>Quadrula quadrula</i>		
<i>Lampsilis abrupta</i>			<i>Simpsonaias ambigua</i>		
<i>Lampsilis cardium</i>			<i>Strophitus undulatus</i>		
<i>Lampsilis hydiana</i>			<i>Toxolasma lividus</i>		
<i>Lampsilis ornata</i>			<i>Toxolasma parvus</i>		
<i>Lampsilis powelli</i>			<i>Toxolasma texasensis</i>		
<i>Lampsilis rafinesqueana</i>			<i>Tritogonia verrucosa</i>		
<i>Lampsilis reeveiana</i>			<i>Truncilla donaciformis</i>		
<i>Lampsilis satura</i>			<i>Truncilla truncata</i>		
<i>Lampsilis streckeri</i>			<i>Uniomerus declivus</i>		
<i>Lampsilis teres</i>			<i>Uniomerus tetralasmus</i>		
<i>Lasmigona costata</i>			<i>Utterbackia imbecillis</i>		
<i>Lasmigona complanata</i>			<i>Venustaconcha ellipsiformis</i>		
<i>Leptodea fragilis</i>	3		<i>Venustaconcha pleasi</i>		
<i>Leptodea leptodon</i>			<i>Villosa arkansasensis</i>		
<i>Ligumia recta</i>			<i>Villosa iris</i>		
<i>Ligumia subrostrata</i>			<i>Villosa lienosa</i>		
<i>Megalonaias nervosa</i>			<i>Corbicula fluminea</i>		

NE 1/4 NE 1/4 SEC 29; T7N; R4E. J.L. Harris, J.T. Fleming

1-2 m deep. Band of undredged mud/silt substrate on gently sloping bank - 4 m wide. Mussels estimated to average ca. 17/m²

A. plicata D-27.8 5+ yrs; next smallest 74.0 D Photos 5-7

Arkansas Freshwater Bivalves Field Data Sheet

Site STF-CC-19

Date 17 July 1995 County Cross Quad Wittsburg
 Drainage St. Francis Substrate silt/mud Width 25-30 m
 Location St. Francis Floodway ca. 4.1 km downstream of Copperas Creek.

	Live	Dead		Live	Dead
<i>Actinonaias ligamentina</i>			<i>Obliquaria reflexa</i>		
<i>Alasmidonta marginata</i>			<i>Obovaria jacksoniana</i>		
<i>Alasmidonta viridis</i>			<i>Obovaria olivaria</i>		
<i>Amblema plicata</i>			<i>Plectomerus dombeyanus</i>		
<i>Anodonta suborbiculata</i>			<i>Pleurobema coccineum</i>		
<i>Anodontoides ferussacianus</i>			<i>Pleurobema pyramidatum</i>		
<i>Arcidens confragosus</i>			<i>Potamilus alatus</i>		
<i>Arkansia wheeleri</i>			<i>Potamilus capax</i>	1	
<i>Cyclonaias tuberculata</i>			<i>Potamilus ohioensis</i>		
<i>Cyprogenia aberti</i>			<i>Potamilus purpuratus</i>		
<i>Cumberlandia monodonta</i>			<i>Ptychobranthus occidentalis</i>		
<i>Ellipsaria lineolata</i>			<i>Pyganodon grandis</i>		
<i>Elliptio dilatata</i>			<i>Quadrula apiculata</i>		
<i>Epioblasma curtisi</i>			<i>Quadrula cylindrica</i>		
<i>Epioblasma triquetra</i>			<i>Quadrula fragosa</i>		
<i>Epioblasma turgidula</i>			<i>Quadrula metanevra</i>		
<i>Fusconaia ebena</i>			<i>Quadrula nodulata</i>		
<i>Fusconaia flava</i>			<i>Quadrula pustulosa</i>		
<i>Fusconaia ozarkensis</i>			<i>Quadrula quadrula</i>		
<i>Lampsilis abrupta</i>			<i>Simpsonaias ambigua</i>		
<i>Lampsilis cardium</i>			<i>Strophitus undulatus</i>		
<i>Lampsilis hydiana</i>			<i>Toxolasma lividus</i>		
<i>Lampsilis ornata</i>			<i>Toxolasma parvus</i>		
<i>Lampsilis powelli</i>			<i>Toxolasma texasensis</i>		
<i>Lampsilis rafinesqueana</i>			<i>Tritogonia verrucosa</i>		
<i>Lampsilis reeveiana</i>			<i>Truncilla donaciformis</i>		
<i>Lampsilis satura</i>			<i>Truncilla truncata</i>		
<i>Lampsilis streckeri</i>			<i>Uniomerus declivus</i>		
<i>Lampsilis teres</i>			<i>Uniomerus tetralasmus</i>		
<i>Lasmigona costata</i>			<i>Utterbackia imbecillis</i>		
<i>Lasmigona complanata</i>			<i>Venustaconcha ellipsiformis</i>		
<i>Leptodea fragilis</i>			<i>Venustaconcha pleasi</i>		
<i>Leptodea leptodon</i>			<i>Villosa arkansasensis</i>		
<i>Ligumia recta</i>			<i>Villosa iris</i>		
<i>Ligumia subrostrata</i>			<i>Villosa lienosa</i>		
<i>Megalonaias nervosa</i>			<i>Corbicula fluminea</i>		

sec line 28-29; T7N; R4E J.L. Harris, J.T. Fleming

Trough of silt/mud at base of bank 1-2 m wide. Mussels estimated
 1-5/m². 10 - 1m² quadrat samples taken along sites 18-19.

Current velocity slow to moderate

Arkansas Freshwater Bivalves Field Data Sheet

Site STF-CC-20

Date 17 July 1995 County Cross Quad Willsburg
 Drainage St. Francis Substrate sand/mud Width 25-30m
 Location St. Francis Floodway ca. 4.3 Km downstream of Copperas Creek.

	Live	Dead		Live	Dead
<i>Actinonaias ligamentina</i>			<i>Obliquaria reflexa</i>		
<i>Alasmidonta marginata</i>			<i>Obovaria jacksoniana</i>		
<i>Alasmidonta viridis</i>			<i>Obovaria olivaria</i>		
<i>Amblema plicata</i>			<i>Plectomerus dombeyanus</i>		
<i>Anodonta suborbiculata</i>			<i>Pleurobema coccineum</i>		
<i>Anodontoides ferussacianus</i>			<i>Pleurobema pyramidatum</i>		
<i>Arcidens confragosus</i>			<i>Potamilus alatus</i>		
<i>Arkansia wheeleri</i>			<i>Potamilus capax</i>		
<i>Cyclonaias tuberculata</i>			<i>Potamilus ohioensis</i>		
<i>Cyprogenia aberti</i>			<i>Potamilus purpuratus</i>		
<i>Cumberlandia monodonta</i>			<i>Ptychobranhus occidentalis</i>		
<i>Ellipsaria lineolata</i>			<i>Pyganodon grandis</i>		
<i>Elliptio dilatata</i>			<i>Quadrula apiculata</i>		
<i>Epioblasma curtisi</i>			<i>Quadrula cylindrica</i>		
<i>Epioblasma triquetra</i>			<i>Quadrula fragosa</i>		
<i>Epioblasma turgidula</i>			<i>Quadrula metanevra</i>		
<i>Fusconaia ebena</i>			<i>Quadrula nodulata</i>		
<i>Fusconaia flava</i>			<i>Quadrula pustulosa</i>		
<i>Fusconaia ozarkensis</i>			<i>Quadrula quadrula</i>		
<i>Lampsilis abrupta</i>			<i>Simpsonaias ambigua</i>		
<i>Lampsilis cardium</i>			<i>Strophitus undulatus</i>		
<i>Lampsilis hydiana</i>			<i>Toxolasma lividus</i>		
<i>Lampsilis ornata</i>			<i>Toxolasma parvus</i>		
<i>Lampsilis powelli</i>			<i>Toxolasma texasensis</i>		
<i>Lampsilis rafinesqueana</i>			<i>Tritogonia verrucosa</i>		
<i>Lampsilis reeveiana</i>			<i>Truncilla donaciformis</i>		
<i>Lampsilis satura</i>			<i>Truncilla truncata</i>		
<i>Lampsilis streckeri</i>			<i>Uniomerus declivus</i>		
<i>Lampsilis teres</i>			<i>Uniomerus tetralasmus</i>		
<i>Lasmigona costata</i>			<i>Utterbackia imbecillis</i>		
<i>Lasmigona complanata</i>			<i>Venustaconcha ellipsiformis</i>		
<i>Leptodea fragilis</i>	4		<i>Venustaconcha pleasi</i>		
<i>Leptodea leptodon</i>			<i>Villosa arkansasensis</i>		
<i>Ligumia recta</i>			<i>Villosa iris</i>		
<i>Ligumia subrostrata</i>			<i>Villosa lienosa</i>		
<i>Megalonaias nervosa</i>			<i>Corbicula fluminea</i>		

SW 1/4 NW 1/4 SEC 28; T7N; R4E. J.L. Harris, J.T. Fleming
moderate current 1-2 m deep sand substrate w/ little mud at base
of bank. mussels scattered

Arkansas Freshwater Bivalves Field Data Sheet

Site STF-CC-21

Date 17 July 1995 County Cross Quad Wittsburg
 Drainage St. Francis Substrate SAND Width 25-30m
 Location St. Francis Floodway ca. 2.2 Km upstream of Village Creek.

	Live	Dead		Live	Dead
<i>Actinonaias ligamentina</i>			<i>Obliquaria reflexa</i>		
<i>Alasmidonta marginata</i>			<i>Obovaria jacksoniana</i>		
<i>Alasmidonta viridis</i>			<i>Obovaria olivaria</i>		
<i>Amblema plicata</i>			<i>Plectomerus dombeyanus</i>		
<i>Anodonta suborbiculata</i>			<i>Pleurobema coccineum</i>		
<i>Anodontoides ferussacianus</i>			<i>Pleurobema pyramidatum</i>		
<i>Arcidens confragosus</i>			<i>Potamilus alatus</i>		
<i>Arkansia wheeleri</i>			<i>Potamilus capax</i>		
<i>Cyclonaias tuberculata</i>			<i>Potamilus ohioensis</i>	2	
<i>Cyprogenia aberti</i>			<i>Potamilus purpuratus</i>		
<i>Cumberlandia monodonta</i>			<i>Ptychobranhus occidentalis</i>		
<i>Ellipsaria lineolata</i>			<i>Pyganodon grandis</i>		
<i>Elliptio dilatata</i>			<i>Quadrula apiculata</i>		
<i>Epioblasma curtisi</i>			<i>Quadrula cylindrica</i>		
<i>Epioblasma triquetra</i>			<i>Quadrula fragosa</i>		
<i>Epioblasma turgidula</i>			<i>Quadrula metanevra</i>		
<i>Fusconaia ebena</i>			<i>Quadrula nodulata</i>		
<i>Fusconaia flava</i>			<i>Quadrula pustulosa</i>		
<i>Fusconaia ozarkensis</i>			<i>Quadrula quadrula</i>		
<i>Lampsilis abrupta</i>			<i>Simpsonaias ambigua</i>		
<i>Lampsilis cardium</i>			<i>Strophitus undulatus</i>		
<i>Lampsilis hydiana</i>			<i>Toxolasma lividus</i>		
<i>Lampsilis ornata</i>			<i>Toxolasma parvus</i>		
<i>Lampsilis powelli</i>			<i>Toxolasma texasensis</i>		
<i>Lampsilis rafinesqueana</i>			<i>Tritogonia verrucosa</i>		
<i>Lampsilis reeveiana</i>			<i>Truncilla donaciformis</i>		
<i>Lampsilis satura</i>			<i>Truncilla truncata</i>		
<i>Lampsilis streckeri</i>			<i>Uniomerus declivus</i>		
<i>Lampsilis teres</i>			<i>Uniomerus tetralasmus</i>		
<i>Lasmigona costata</i>			<i>Utterbackia imbecillis</i>		
<i>Lasmigona complanata</i>			<i>Venustaconcha ellipsiformis</i>		
<i>Leptodea fragilis</i>			<i>Venustaconcha pleasi</i>		
<i>Leptodea leptodon</i>			<i>Villosa arkansasensis</i>		
<i>Ligumia recta</i>			<i>Villosa iris</i>		
<i>Ligumia subrostrata</i>			<i>Villosa lienosa</i>		
<i>Megalonaias nervosa</i>			<i>Corbicula fluminea</i>		

NW 1/4 SE 1/4 sec 28 ; T 7N ; R 4E J.L. Harris , J.T. Fleming

1-1.5 m deep , moderate current

Arkansas Freshwater Bivalves Field Data Sheet

Site STF-CC-22

Date 17 July 1995 County Cross Quad Wittsburg
 Drainage St. Francis Substrate fine silt/sand Width 30-35 m
 Location St. Francis Floodway ca. 1.8 Km upstream of Village Creek.

	Live	Dead		Live	Dead
<i>Actinonaias ligamentina</i>			<i>Obliquaria reflexa</i>		
<i>Alasmidonta marginata</i>			<i>Obovaria jacksoniana</i>		
<i>Alasmidonta viridis</i>			<i>Obovaria olivaria</i>		
<i>Amblema plicata</i>			<i>Plectomerus dombeyanus</i>		
<i>Anodonta suborbiculata</i>			<i>Pleurobema coccineum</i>		
<i>Anodontoides ferussacianus</i>			<i>Pleurobema pyramidatum</i>		
<i>Arcidens confragosus</i>			<i>Potamilus alatus</i>		
<i>Arkansia wheeleri</i>			<i>Potamilus capax</i>		
<i>Cyclonaias tuberculata</i>			<i>Potamilus ohiensis</i>		
<i>Cyprogenia aberti</i>			<i>Potamilus purpuratus</i>	2	
<i>Cumberlandia monodonta</i>			<i>Ptychobranthus occidentalis</i>		
<i>Ellipsaria lineolata</i>			<i>Pyganodon grandis</i>		
<i>Elliptio dilatata</i>			<i>Quadrula apiculata</i>		
<i>Epioblasma curtisi</i>			<i>Quadrula cylindrica</i>		
<i>Epioblasma triquetra</i>			<i>Quadrula fragosa</i>		
<i>Epioblasma turgidula</i>			<i>Quadrula metanevra</i>		
<i>Fusconaia ebena</i>			<i>Quadrula nodulata</i>		
<i>Fusconaia flava</i>			<i>Quadrula pustulosa</i>		
<i>Fusconaia ozarkensis</i>			<i>Quadrula quadrula</i>		
<i>Lampsilis abrupta</i>			<i>Simpsonaias ambigua</i>		
<i>Lampsilis cardium</i>			<i>Strophitus undulatus</i>		
<i>Lampsilis hydiana</i>			<i>Toxolasma lividus</i>		
<i>Lampsilis ornata</i>			<i>Toxolasma parvus</i>		
<i>Lampsilis powelli</i>			<i>Toxolasma texasensis</i>		
<i>Lampsilis rafinesqueana</i>			<i>Tritogonia verrucosa</i>		
<i>Lampsilis reeveiana</i>			<i>Truncilla donaciformis</i>		
<i>Lampsilis satura</i>			<i>Truncilla truncata</i>		
<i>Lampsilis streckeri</i>			<i>Uniomerus declivus</i>		
<i>Lampsilis teres</i>			<i>Uniomerus tetralasmus</i>		
<i>Lasmigona costata</i>			<i>Utterbackia imbecillis</i>		
<i>Lasmigona complanata</i>			<i>Venustaconcha ellipsiformis</i>		
<i>Leptodea fragilis</i>			<i>Venustaconcha pleasi</i>		
<i>Leptodea leptodon</i>			<i>Villosa arkansasensis</i>		
<i>Ligumia recta</i>			<i>Villosa iris</i>		
<i>Ligumia subrostrata</i>			<i>Villosa lienosa</i>		
<i>Megalonaias nervosa</i>			<i>Corbicula fluminea</i>		

sw 1/4 sw 1/4 Sec 28; T7N; R4E J.L. Harris, J.T. Fleming

1-2 m deep. slow-moderate current velocity

Arkansas Freshwater Bivalves Field Data Sheet

Site STF-CC-23

Date 17 July 1995 County Cross Quad Wittsburg
 Drainage St. Francis Substrate fine silt/sand Width 30-35m
 Location St. Francis Floodway ca. 1.5 km upstream of Village Creek.

	Live	Dead		Live	Dead
<i>Actinonaias ligamentina</i>			<i>Obliquaria reflexa</i>		
<i>Alasmidonta marginata</i>			<i>Obovaria jacksoniana</i>		
<i>Alasmidonta viridis</i>			<i>Obovaria olivaria</i>		
<i>Amblema plicata</i>			<i>Plectomerus dombeyanus</i>		
<i>Anodonta suborbiculata</i>			<i>Pleurobema coccineum</i>		
<i>Anodontoides ferussacianus</i>			<i>Pleurobema pyramidatum</i>		
<i>Arcidens confragosus</i>			<i>Potamilus alatus</i>		
<i>Arkansia wheeleri</i>			<i>Potamilus capax</i>		
<i>Cyclonaias tuberculata</i>			<i>Potamilus ohiensis</i>		
<i>Cyprogenia aberti</i>			<i>Potamilus purpuratus</i>	1	
<i>Cumberlandia monodonta</i>			<i>Ptychobranthus occidentalis</i>		
<i>Ellipsaria lineolata</i>			<i>Pyganodon grandis</i>		
<i>Elliptio dilatata</i>			<i>Quadrula apiculata</i>		
<i>Epioblasma curtisi</i>			<i>Quadrula cylindrica</i>		
<i>Epioblasma triquetra</i>			<i>Quadrula fragosa</i>		
<i>Epioblasma turgidula</i>			<i>Quadrula metanevra</i>		
<i>Fusconaia ebena</i>			<i>Quadrula nodulata</i>		
<i>Fusconaia flava</i>			<i>Quadrula pustulosa</i>		
<i>Fusconaia ozarkensis</i>			<i>Quadrula quadrula</i>		
<i>Lampsilis abrupta</i>			<i>Simpsonaias ambigua</i>		
<i>Lampsilis cardium</i>			<i>Strophitus undulatus</i>		
<i>Lampsilis hydiana</i>			<i>Toxolasma lividus</i>		
<i>Lampsilis ornata</i>			<i>Toxolasma parvus</i>		
<i>Lampsilis powelli</i>			<i>Toxolasma texasensis</i>		
<i>Lampsilis rafinesqueana</i>			<i>Tritogonia verrucosa</i>		
<i>Lampsilis reeveiana</i>			<i>Truncilla donaciformis</i>		
<i>Lampsilis satura</i>			<i>Truncilla truncata</i>		
<i>Lampsilis streckeri</i>			<i>Uniomerus declivus</i>		
<i>Lampsilis teres</i>			<i>Uniomerus tetralasmus</i>		
<i>Lasmigona costata</i>			<i>Utterbackia imbecillis</i>		
<i>Lasmigona complanata</i>			<i>Venustaconcha ellipsiformis</i>		
<i>Leptodea fragilis</i>			<i>Venustaconcha pleasi</i>		
<i>Leptodea leptodon</i>			<i>Villosa arkansasensis</i>		
<i>Ligumia recta</i>			<i>Villosa iris</i>		
<i>Ligumia subrostrata</i>			<i>Villosa lienosa</i>		
<i>Megalonaias nervosa</i>			<i>Corbicula fluminea</i>		

NE 1/4 NE 1/4 sec 33; T7N; R4E J.L. Harris, J.T. Fleming
2-3 m deep, slow to moderate current; photos 8 & 9.

Arkansas Freshwater Bivalves Field Data Sheet

Site STF-CC-24

Date 17 July 1995 County Cross Quad Wittsburg
 Drainage St. Francis Substrate Sand Width 30-35 m
 Location St. Francis Floodway ca. 1.4 km upstream of Village Creek

	Live	Dead		Live	Dead
<i>Actinonaias ligamentina</i>			<i>Obliquaria reflexa</i>		
<i>Alasmidonta marginata</i>			<i>Obovaria jacksoniana</i>		
<i>Alasmidonta viridis</i>			<i>Obovaria olivaria</i>		
<i>Amblema plicata</i>			<i>Plectomerus dombeyanus</i>		
<i>Anodonta suborbiculata</i>			<i>Pleurobema coccineum</i>		
<i>Anodontoides ferussacianus</i>			<i>Pleurobema pyramidatum</i>		
<i>Arcidens confragosus</i>			<i>Potamilus alatus</i>		
<i>Arkansia wheeleri</i>			<i>Potamilus capax</i>		
<i>Cyclonaias tuberculata</i>			<i>Potamilus ohioensis</i>	1	
<i>Cyprogenia aberti</i>			<i>Potamilus purpuratus</i>	1	
<i>Cumberlandia monodonta</i>			<i>Ptychobranhus occidentalis</i>		
<i>Ellipsaria lineolata</i>			<i>Pyganodon grandis</i>		
<i>Elliptio dilatata</i>			<i>Quadrula apiculata</i>		
<i>Epioblasma curtisi</i>			<i>Quadrula cylindrica</i>		
<i>Epioblasma triquetra</i>			<i>Quadrula fragosa</i>		
<i>Epioblasma turgidula</i>			<i>Quadrula metanevra</i>		
<i>Fusconaia ebena</i>			<i>Quadrula nodulata</i>	1	
<i>Fusconaia flava</i>			<i>Quadrula pustulosa</i>		
<i>Fusconaia ozarkensis</i>			<i>Quadrula quadrula</i>		
<i>Lampsilis abrupta</i>			<i>Simpsonaias ambigua</i>		
<i>Lampsilis cardium</i>			<i>Strophitus undulatus</i>		
<i>Lampsilis hydiana</i>			<i>Toxolasma lividus</i>		
<i>Lampsilis ornata</i>			<i>Toxolasma parvus</i>		
<i>Lampsilis powelli</i>			<i>Toxolasma texasensis</i>		
<i>Lampsilis rafinesqueana</i>			<i>Tritogonia verrucosa</i>		
<i>Lampsilis reeveiana</i>			<i>Truncilla donaciformis</i>		
<i>Lampsilis satura</i>			<i>Truncilla truncata</i>		
<i>Lampsilis streckeri</i>			<i>Uniomerus declivus</i>		
<i>Lampsilis teres</i>			<i>Uniomerus tetralasmus</i>		
<i>Lasmigona costata</i>			<i>Utterbackia imbecillis</i>		
<i>Lasmigona complanata</i>			<i>Venustaconcha ellipsiformis</i>		
<i>Leptodea fragilis</i>			<i>Venustaconcha pleasi</i>		
<i>Leptodea leptodon</i>			<i>Villosa arkansasensis</i>		
<i>Ligumia recta</i>			<i>Villosa iris</i>		
<i>Ligumia subrostrata</i>			<i>Villosa lienosa</i>		
<i>Megalonaias nervosa</i>			<i>Corbicula fluminea</i>		

NE 1/4 NE 1/4 sec 33; T7N; R4E J.L. Harris, J.T. Fleming

2-2.5 m deep, moderate current velocity

Arkansas Freshwater Bivalves Field Data Sheet

Site STF-CC-25

Date 17 July 1995 County Cross Quad Wittsburg
 Drainage St. Francis Substrate Fine silt, muck Width 30-35 m
 Location St. Francis Floodway ca. 1.2 Km upstream of Village Creek.

	Live	Dead		Live	Dead
<i>Actinonaias ligamentina</i>			<i>Obliquaria reflexa</i>		
<i>Alasmidonta marginata</i>			<i>Obovaria jacksoniana</i>		
<i>Alasmidonta viridis</i>			<i>Obovaria olivaria</i>		
<i>Amblema plicata</i>			<i>Plectomerus dombeyanus</i>		
<i>Anodonta suborbiculata</i>			<i>Pleurobema coccineum</i>		
<i>Anodontoides ferussacianus</i>			<i>Pleurobema pyramidatum</i>		
<i>Arcidens confragosus</i>			<i>Potamilus alatus</i>		
<i>Arkansia wheeleri</i>			<i>Potamilus capax</i>		
<i>Cyclonaias tuberculata</i>			<i>Potamilus ohioensis</i>		
<i>Cyprogenia aberti</i>			<i>Potamilus purpuratus</i>		
<i>Cumberlandia monodonta</i>			<i>Ptychobranchnus occidentalis</i>		
<i>Ellipsaria lineolata</i>			<i>Pyganodon grandis</i>		
<i>Elliptio dilatata</i>			<i>Quadrula apiculata</i>		
<i>Epioblasma curtisi</i>			<i>Quadrula cylindrica</i>		
<i>Epioblasma triquetra</i>			<i>Quadrula fragosa</i>		
<i>Epioblasma turgidula</i>			<i>Quadrula metanevra</i>		
<i>Fusconaia ebena</i>			<i>Quadrula nodulata</i>		
<i>Fusconaia flava</i>			<i>Quadrula pustulosa</i>		
<i>Fusconaia ozarkensis</i>			<i>Quadrula quadrula</i>		
<i>Lampsilis abrupta</i>			<i>Simpsonaias ambigua</i>		
<i>Lampsilis cardium</i>			<i>Strophitus undulatus</i>		
<i>Lampsilis hydiana</i>			<i>Toxolasma lividus</i>		
<i>Lampsilis ornata</i>			<i>Toxolasma parvus</i>		
<i>Lampsilis powelli</i>			<i>Toxolasma texasensis</i>		
<i>Lampsilis rafinesqueana</i>			<i>Tritogonia verrucosa</i>		
<i>Lampsilis reeveiana</i>			<i>Truncilla donaciformis</i>		
<i>Lampsilis satura</i>			<i>Truncilla truncata</i>		
<i>Lampsilis streckeri</i>			<i>Uniomerus declivus</i>		
<i>Lampsilis teres</i>			<i>Uniomerus tetralasmus</i>		
<i>Lasmigona costata</i>			<i>Utterbackia imbecillis</i>		
<i>Lasmigona complanata</i>			<i>Venustaconcha ellipsiformis</i>		
<i>Leptodea fragilis</i>	1		<i>Venustaconcha pleasi</i>		
<i>Leptodea leptodon</i>			<i>Villosa arkansasensis</i>		
<i>Ligumia recta</i>			<i>Villosa iris</i>		
<i>Ligumia subrostrata</i>	1		<i>Villosa lienosa</i>		
<i>Megalonaias nervosa</i>			<i>Corbicula fluminea</i>		

NE 1/4 NE 1/4 sec 33; T7N; R4E J.L. Harris, J.T. Fleming
0.5-3.0 m deep, current velocity slow; very fine grained substrate

Arkansas Freshwater Bivalves Field Data Sheet

Site STF-CC-26

Date 17 July 1995 County Cross Quad Wittsburg
 Drainage St. Francis Substrate silt/sand Width 30-35 m
 Location St. Francis Floodway ca. 0.9 Km upstream of Village Creek.

	Live	Dead		Live	Dead
<i>Actinonaias ligamentina</i>			<i>Obliquaria reflexa</i>		
<i>Alasmidonta marginata</i>			<i>Obovaria jacksoniana</i>		
<i>Alasmidonta viridis</i>			<i>Obovaria olivaria</i>		
<i>Amblema plicata</i>			<i>Plectomerus dombeyanus</i>		
<i>Anodonta suborbiculata</i>			<i>Pleurobema coccineum</i>		
<i>Anodontoides ferussacianus</i>			<i>Pleurobema pyramidatum</i>		
<i>Arcidens confragosus</i>			<i>Potamilus alatus</i>		
<i>Arkansia wheeleri</i>			<i>Potamilus capax</i>		2
<i>Cyclonaias tuberculata</i>			<i>Potamilus ohiensis</i>		
<i>Cyprogenia aberti</i>			<i>Potamilus purpuratus</i>		
<i>Cumberlandia monodonta</i>			<i>Ptychobranthus occidentalis</i>		
<i>Ellipsaria lineolata</i>			<i>Pyganodon grandis</i>		
<i>Elliptio dilatata</i>			<i>Quadrula apiculata</i>		
<i>Epioblasma curtisi</i>			<i>Quadrula cylindrica</i>		
<i>Epioblasma triquetra</i>			<i>Quadrula fragosa</i>		
<i>Epioblasma turgidula</i>			<i>Quadrula metanevra</i>		
<i>Fusconaia ebena</i>			<i>Quadrula nodulata</i>		
<i>Fusconaia flava</i>			<i>Quadrula pustulosa</i>		
<i>Fusconaia ozarkensis</i>			<i>Quadrula quadrula</i>	1	
<i>Lampsilis abrupta</i>			<i>Simpsonaias ambigua</i>		
<i>Lampsilis cardium</i>			<i>Strophitus undulatus</i>		
<i>Lampsilis hydiana</i>			<i>Toxolasma lividus</i>		
<i>Lampsilis ornata</i>			<i>Toxolasma parvus</i>		
<i>Lampsilis powelli</i>			<i>Toxolasma texasensis</i>		
<i>Lampsilis rafinesqueana</i>			<i>Tritogonia verrucosa</i>		
<i>Lampsilis reeveiana</i>			<i>Truncilla donaciformis</i>		
<i>Lampsilis satura</i>			<i>Truncilla truncata</i>		
<i>Lampsilis streckeri</i>			<i>Uniomerus declivus</i>		
<i>Lampsilis teres</i>			<i>Uniomerus tetralasmus</i>		
<i>Lasmigona costata</i>			<i>Utterbackia imbecillis</i>		
<i>Lasmigona complanata</i>			<i>Venustaconcha ellipsiformis</i>		
<i>Leptodea fragilis</i>			<i>Venustaconcha pleasi</i>		
<i>Leptodea leptodon</i>			<i>Villosa arkansasensis</i>		
<i>Ligumia recta</i>			<i>Villosa iris</i>		
<i>Ligumia subrostrata</i>			<i>Villosa lienosa</i>		
<i>Megaloniais nervosa</i>			<i>Corbicula fluminea</i>		

SE 1/4 NE 1/4 sec 33; T7N; R4E J.L.Harris, J.T. Fleming

1-3 m deep; slow-moderate current velocity

Arkansas Freshwater Bivalves Field Data Sheet

Site STF-CC-27

Date 17 July 1995 County Cross Quad Wittsburg
 Drainage St. Francis Substrate silt/sand Width 30-35 m
 Location St. Francis Floodway ca. 0.5 km upstream of Village Creek.

	Live	Dead		Live	Dead
<i>Actinonaias ligamentina</i>			<i>Obliquaria reflexa</i>		
<i>Alasmidonta marginata</i>			<i>Obovaria jacksoniana</i>		
<i>Alasmidonta viridis</i>			<i>Obovaria olivaria</i>		
<i>Amblema plicata</i>			<i>Plectomerus dombeyanus</i>		
<i>Anodonta suborbiculata</i>	1		<i>Pleurobema coccineum</i>		
<i>Anodontoides ferussacianus</i>			<i>Pleurobema pyramidatum</i>		
<i>Arcidens confragosus</i>			<i>Potamilus alatus</i>		
<i>Arkansia wheeleri</i>			<i>Potamilus capax</i>		
<i>Cyclonaias tuberculata</i>			<i>Potamilus ohioensis</i>		
<i>Cyprogenia aberti</i>			<i>Potamilus purpuratus</i>	1	
<i>Cumberlandia monodonta</i>			<i>Ptychobranhus occidentalis</i>		
<i>Ellipsaria lineolata</i>			<i>Pyganodon grandis</i>		
<i>Elliptio dilatata</i>			<i>Quadrula apiculata</i>		
<i>Epioblasma curtisi</i>			<i>Quadrula cylindrica</i>		
<i>Epioblasma triquetra</i>			<i>Quadrula fragosa</i>		
<i>Epioblasma turgidula</i>			<i>Quadrula metanevra</i>		
<i>Fusconaia ebena</i>			<i>Quadrula nodulata</i>		
<i>Fusconaia flava</i>			<i>Quadrula pustulosa</i>		
<i>Fusconaia ozarkensis</i>			<i>Quadrula quadrula</i>		
<i>Lampsilis abrupta</i>			<i>Simpsonaias ambigua</i>		
<i>Lampsilis cardium</i>			<i>Strophitus undulatus</i>		
<i>Lampsilis hydiana</i>			<i>Toxolasma lividus</i>		
<i>Lampsilis ornata</i>			<i>Toxolasma parvus</i>		
<i>Lampsilis powelli</i>			<i>Toxolasma texasensis</i>		
<i>Lampsilis rafinesqueana</i>			<i>Tritogonia verrucosa</i>		
<i>Lampsilis reeveiana</i>			<i>Truncilla donaciformis</i>		
<i>Lampsilis satura</i>			<i>Truncilla truncata</i>		
<i>Lampsilis streckeri</i>			<i>Uniomerus declivus</i>		
<i>Lampsilis teres</i>			<i>Uniomerus tetralasmus</i>		
<i>Lasmigona costata</i>			<i>Utterbackia imbecillis</i>		
<i>Lasmigona complanata</i>			<i>Venustaconcha ellipsiformis</i>		
<i>Leptodea fragilis</i>	1		<i>Venustaconcha pleasi</i>		
<i>Leptodea leptodon</i>			<i>Villosa arkansasensis</i>		
<i>Ligumia recta</i>			<i>Villosa iris</i>		
<i>Ligumia subrostrata</i>			<i>Villosa lienosa</i>		
<i>Megalonaias nervosa</i>			<i>Corbicula fluminea</i>		

NE 1/4 SE 1/4 Sec 33; T7N; R4E J.L. Harris, J.T. Fleming

1-3 m deep; slow to moderate current velocity

Arkansas Freshwater Bivalves Field Data Sheet

Site STF-CC-28

Date 17 July 1995 County Cross Quad Wittsburg
 Drainage St. Francis Substrate Sand/silt Width 30-35 m
 Location St. Francis Floodway ca. 0.3 Km downstream of Village Creek

	Live	Dead		Live	Dead
<i>Actinonaias ligamentina</i>			<i>Obliquaria reflexa</i>		
<i>Alasmidonta marginata</i>			<i>Obovaria jacksoniana</i>		
<i>Alasmidonta viridis</i>			<i>Obovaria olivaria</i>		
<i>Amblema plicata</i>			<i>Plectomerus dombeyanus</i>		
<i>Anodonta suborbiculata</i>			<i>Pleurobema coccineum</i>		
<i>Anodontoides ferussacianus</i>			<i>Pleurobema pyramidatum</i>		
<i>Arcidens confragosus</i>			<i>Potamilus alatus</i>		
<i>Arkansia wheeleri</i>			<i>Potamilus capax</i>		
<i>Cyclonaias tuberculata</i>			<i>Potamilus ohiensis</i>		
<i>Cyprogenia aberti</i>			<i>Potamilus purpuratus</i>		
<i>Cumberlandia monodonta</i>			<i>Ptychobranthus occidentalis</i>		
<i>Ellipsaria lineolata</i>			<i>Pyganodon grandis</i>	1	
<i>Elliptio dilatata</i>			<i>Quadrula apiculata</i>		
<i>Epioblasma curtisi</i>			<i>Quadrula cylindrica</i>		
<i>Epioblasma triquetra</i>			<i>Quadrula fragosa</i>		
<i>Epioblasma turgidula</i>			<i>Quadrula metanevra</i>		
<i>Fusconaia ebena</i>			<i>Quadrula nodulata</i>		
<i>Fusconaia flava</i>			<i>Quadrula pustulosa</i>		
<i>Fusconaia ozarkensis</i>			<i>Quadrula quadrula</i>		
<i>Lampsilis abrupta</i>			<i>Simpsonaias ambigua</i>		
<i>Lampsilis cardium</i>			<i>Strophitus undulatus</i>		
<i>Lampsilis hydiana</i>			<i>Toxolasma lividus</i>		
<i>Lampsilis ornata</i>			<i>Toxolasma parvus</i>		
<i>Lampsilis powelli</i>			<i>Toxolasma texasensis</i>		
<i>Lampsilis rafinesqueana</i>			<i>Tritogonia verrucosa</i>		
<i>Lampsilis reeveiana</i>			<i>Truncilla donaciformis</i>		
<i>Lampsilis satura</i>			<i>Truncilla truncata</i>		
<i>Lampsilis streckeri</i>			<i>Uniomerus declivus</i>		
<i>Lampsilis teres</i>			<i>Uniomerus tetralasmus</i>		
<i>Lasmigona costata</i>			<i>Utterbackia imbecillis</i>		
<i>Lasmigona complanata</i>			<i>Venustaconcha ellipsiformis</i>		
<i>Leptodea fragilis</i>			<i>Venustaconcha pleasi</i>		
<i>Leptodea leptodon</i>			<i>Villosa arkansasensis</i>		
<i>Ligumia recta</i>			<i>Villosa iris</i>		
<i>Ligumia subrostrata</i>	1		<i>Villosa lienosa</i>		
<i>Megalonaias nervosa</i>			<i>Corbicula fluminea</i>		

NE 1/4 NE 1/4 sec 4; T6N; R4E J.L. Harris, J.T. Fleming

3-4 m deep; moderate current velocity photos 10 & 11.

Arkansas Freshwater Bivalves Field Data Sheet

Site STF-CC-29

Date 17 July 1995 County Cross Quad Wittsburg
 Drainage St. Francis Substrate Sand/Fine silt Width 30-35 m
 Location St. Francis Floodway ca. 0.8 km downstream of Village Creek

	Live	Dead		Live	Dead
<i>Actinonaias ligamentina</i>			<i>Obliquaria reflexa</i>		
<i>Alasmidonta marginata</i>			<i>Obovaria jacksoniana</i>		
<i>Alasmidonta viridis</i>			<i>Obovaria olivaria</i>		
<i>Amblema plicata</i>			<i>Plectomerus dombeyanus</i>		
<i>Anodonta suborbiculata</i>			<i>Pleurobema coccineum</i>		
<i>Anodontoides ferussacianus</i>			<i>Pleurobema pyramidatum</i>		
<i>Arcidens confragosus</i>			<i>Potamilus alatus</i>		
<i>Arkansia wheeleri</i>			<i>Potamilus capax</i>		
<i>Cyclonaias tuberculata</i>			<i>Potamilus ohiensis</i>		
<i>Cyprogenia aberti</i>			<i>Potamilus purpuratus</i>		
<i>Cumberlandia monodonta</i>			<i>Ptychobranthus occidentalis</i>		
<i>Ellipsaria lineolata</i>			<i>Pyganodon grandis</i>	1	
<i>Elliptio dilatata</i>			<i>Quadrula apiculata</i>		
<i>Epioblasma curtisi</i>			<i>Quadrula cylindrica</i>		
<i>Epioblasma triquetra</i>			<i>Quadrula fragosa</i>		
<i>Epioblasma turgidula</i>			<i>Quadrula metanevra</i>		
<i>Fusconaia ebena</i>			<i>Quadrula nodulata</i>		
<i>Fusconaia flava</i>			<i>Quadrula pustulosa</i>		
<i>Fusconaia ozarkensis</i>			<i>Quadrula quadrula</i>		
<i>Lampsilis abrupta</i>			<i>Simpsonaias ambigua</i>		
<i>Lampsilis cardium</i>			<i>Strophitus undulatus</i>		
<i>Lampsilis hydiana</i>			<i>Toxolasma lividus</i>		
<i>Lampsilis ornata</i>			<i>Toxolasma parvus</i>		
<i>Lampsilis powelli</i>			<i>Toxolasma texasensis</i>		
<i>Lampsilis rafinesqueana</i>			<i>Tritogonia verrucosa</i>		
<i>Lampsilis reeveiana</i>			<i>Truncilla donaciformis</i>		
<i>Lampsilis satura</i>			<i>Truncilla truncata</i>		
<i>Lampsilis streckeri</i>			<i>Uniomerus declivus</i>		
<i>Lampsilis teres</i>			<i>Uniomerus tetralasmus</i>		
<i>Lasmigona costata</i>			<i>Utterbackia imbecillis</i>		
<i>Lasmigona complanata</i>			<i>Venustaconcha ellipsiformis</i>		
<i>Leptodea fragilis</i>			<i>Venustaconcha pleasi</i>		
<i>Leptodea leptodon</i>			<i>Villosa arkansasensis</i>		
<i>Ligumia recta</i>			<i>Villosa iris</i>		
<i>Ligumia subrostrata</i>			<i>Villosa lienosa</i>		
<i>Megalonaias nervosa</i>			<i>Corbicula fluminea</i>		

NE 1/4 SE 1/4 sec 4; T6N; R4E J.L. Harris, J.T. Fleming
2-3 m deep; slow current velocity; silt substrate at bank, Fine silt
over sand in deepest water.

Arkansas Freshwater Bivalves Field Data Sheet

Site SF-CC-30

Date 17 July 1995 County Cross Quad Wittsburg
 Drainage St. Francis Substrate fine silt Width 30-35 m
 Location St. Francis Floodway ca. 1.6 Km downstream of Village Creek

	Live	Dead		Live	Dead
<i>Actinonaias ligamentina</i>			<i>Obliquaria reflexa</i>		
<i>Alasmidonta marginata</i>			<i>Obovaria jacksoniana</i>		
<i>Alasmidonta viridis</i>			<i>Obovaria olivaria</i>		
<i>Amblema plicata</i>			<i>Plectomerus dombeyanus</i>		
<i>Anodonta suborbiculata</i>			<i>Pleurobema coccineum</i>		
<i>Anodontoides ferussacianus</i>			<i>Pleurobema pyramidatum</i>		
<i>Arcidens confragosus</i>			<i>Potamilus alatus</i>		
<i>Arkansia wheeleri</i>			<i>Potamilus capax</i>		
<i>Cyclonaias tuberculata</i>			<i>Potamilus ohiensis</i>		
<i>Cyprogenia aberti</i>			<i>Potamilus purpuratus</i>		
<i>Cumberlandia monodonta</i>			<i>Ptychobranthus occidentalis</i>		
<i>Ellipsaria lineolata</i>			<i>Pyganodon grandis</i>		
<i>Elliptio dilatata</i>			<i>Quadrula apiculata</i>		
<i>Epioblasma curtisi</i>			<i>Quadrula cylindrica</i>		
<i>Epioblasma triquetra</i>			<i>Quadrula fragosa</i>		
<i>Epioblasma turgidula</i>			<i>Quadrula metanevra</i>		
<i>Fusconaia ebena</i>			<i>Quadrula nodulata</i>		
<i>Fusconaia flava</i>			<i>Quadrula pustulosa</i>		
<i>Fusconaia ozarkensis</i>			<i>Quadrula quadrula</i>		
<i>Lampsilis abrupta</i>			<i>Simpsonaias ambigua</i>		
<i>Lampsilis cardium</i>			<i>Strophitus undulatus</i>		
<i>Lampsilis hydiana</i>			<i>Toxolasma lividus</i>		
<i>Lampsilis ornata</i>			<i>Toxolasma parvus</i>		
<i>Lampsilis powelli</i>			<i>Toxolasma texasensis</i>		
<i>Lampsilis rafinesqueana</i>			<i>Tritogonia verrucosa</i>		
<i>Lampsilis reeveiana</i>			<i>Truncilla donaciformis</i>		
<i>Lampsilis satura</i>			<i>Truncilla truncata</i>		
<i>Lampsilis streckeri</i>			<i>Uniomerus declivus</i>		
<i>Lampsilis teres</i>			<i>Uniomerus tetralasmus</i>		
<i>Lasmigona costata</i>			<i>Utterbackia imbecillis</i>		
<i>Lasmigona complanata</i>			<i>Venustaconcha ellipsiformis</i>		
<i>Leptodea fragilis</i>	1		<i>Venustaconcha pleasi</i>		
<i>Leptodea leptodon</i>			<i>Villosa arkansasensis</i>		
<i>Ligumia recta</i>			<i>Villosa iris</i>		
<i>Ligumia subrostrata</i>			<i>Villosa lienosa</i>		
<i>Megalonaias nervosa</i>			<i>Corbicula fluminea</i>		

SE 1/4 SE 1/4 SEC 4; T6N; R4E. J.L. Harris, J.T. Fleming
3-3.5 m deep; slow current velocity; fine silt substrate - 30-50 cm
deep

Arkansas Freshwater Bivalves Field Data Sheet

Site STF-CC-31

Date 18 July 1995 County Cross Quad Wittsburg
 Drainage St. Francis Substrate sand/silt Width 30-35m
 Location St. Francis Floodway ca. 1.0 km upstream of County Rd. 48N Bridge.

	Live	Dead		Live	Dead
<i>Actinonaias ligamentina</i>			<i>Obliquaria reflexa</i>		
<i>Alasmidonta marginata</i>			<i>Obovaria jacksoniana</i>		
<i>Alasmidonta viridis</i>			<i>Obovaria olivaria</i>		
<i>Amblema plicata</i>			<i>Plectomerus dombeyanus</i>		
<i>Anodonta suborbiculata</i>			<i>Pleurobema coccineum</i>		
<i>Anodontoides ferussacianus</i>			<i>Pleurobema pyramidatum</i>		
<i>Arcidens confragosus</i>			<i>Potamilus alatus</i>		
<i>Arkansia wheeleri</i>			<i>Potamilus capax</i>		
<i>Cyclonaias tuberculata</i>			<i>Potamilus ohioensis</i>	2	
<i>Cyprogenia aberti</i>			<i>Potamilus purpuratus</i>	2	
<i>Cumberlandia monodonta</i>			<i>Ptychobranhus occidentalis</i>		
<i>Ellipsaria lineolata</i>			<i>Pyganodon grandis</i>		
<i>Elliptio dilatata</i>			<i>Quadrula apiculata</i>		
<i>Epioblasma curtisi</i>			<i>Quadrula cylindrica</i>		
<i>Epioblasma triquetra</i>			<i>Quadrula fragosa</i>		
<i>Epioblasma turgidula</i>			<i>Quadrula metanevra</i>		
<i>Fusconaia ebena</i>			<i>Quadrula nodulata</i>	1	
<i>Fusconaia flava</i>			<i>Quadrula pustulosa</i>		
<i>Fusconaia ozarkensis</i>			<i>Quadrula quadrula</i>		
<i>Lampsilis abrupta</i>			<i>Simpsonaias ambigua</i>		
<i>Lampsilis cardium</i>			<i>Strophitus undulatus</i>		
<i>Lampsilis hydiana</i>			<i>Toxolasma lividus</i>		
<i>Lampsilis ornata</i>			<i>Toxolasma parvus</i>		
<i>Lampsilis powelli</i>			<i>Toxolasma texasensis</i>		
<i>Lampsilis rafinesqueana</i>			<i>Tritogonia verrucosa</i>		
<i>Lampsilis reeveiana</i>			<i>Truncilla donaciformis</i>		
<i>Lampsilis satura</i>			<i>Truncilla truncata</i>	2	
<i>Lampsilis streckeri</i>			<i>Uniomerus declivus</i>		
<i>Lampsilis teres</i>			<i>Uniomerus tetralasmus</i>		
<i>Lasmigona costata</i>			<i>Utterbackia imbecillis</i>		
<i>Lasmigona complanata</i>			<i>Venustaconcha ellipsiformis</i>		
<i>Leptodea fragilis</i>	1		<i>Venustaconcha pleasi</i>		
<i>Leptodea leptodon</i>			<i>Villosa arkansasensis</i>		
<i>Ligumia recta</i>			<i>Villosa iris</i>		
<i>Ligumia subrostrata</i>			<i>Villosa lienosa</i>		
<i>Megalonaias nervosa</i>			<i>Corbicula fluminea</i>		

SW 1/4 NE 1/4 sec 10; T6N; R4E J.L. Harris, J.T. Fleming
1.5 - 2.0 m deep. Photos 12 & 13

Arkansas Freshwater Bivalves Field Data Sheet

Site STF-CC-32

Date 18 July 1995 County Cross Quad Wittsburg
 Drainage St. Francis Substrate fine silt Width 30-35m
 Location St. Francis Floodway ca. 0.6 km upstream of County Road 48N Bridge

	Live	Dead		Live	Dead
<i>Actinonaias ligamentina</i>			<i>Obliquaria reflexa</i>		
<i>Alasmidonta marginata</i>			<i>Obovaria jacksoniana</i>		
<i>Alasmidonta viridis</i>			<i>Obovaria olivaria</i>		
<i>Amblema plicata</i>			<i>Plectomerus dombeyanus</i>		
<i>Anodonta suborbiculata</i>			<i>Pleurobema coccineum</i>		
<i>Anodontoides ferussacianus</i>			<i>Pleurobema pyramidatum</i>		
<i>Arcidens confragosus</i>			<i>Potamilus alatus</i>		
<i>Arkansia wheeleri</i>			<i>Potamilus capax</i>		
<i>Cyclonaias tuberculata</i>			<i>Potamilus ohiensis</i>		
<i>Cyprogenia aberti</i>			<i>Potamilus purpuratus</i>		
<i>Cumberlandia monodonta</i>			<i>Ptychobranthus occidentalis</i>		
<i>Ellipsaria lineolata</i>			<i>Pyganodon grandis</i>		
<i>Elliptio dilatata</i>			<i>Quadrula apiculata</i>		
<i>Epioblasma curtisi</i>			<i>Quadrula cylindrica</i>		
<i>Epioblasma triquetra</i>			<i>Quadrula fragosa</i>		
<i>Epioblasma turgidula</i>			<i>Quadrula metanevra</i>		
<i>Fusconaia ebena</i>			<i>Quadrula nodulata</i>		
<i>Fusconaia flava</i>			<i>Quadrula pustulosa</i>		
<i>Fusconaia ozarkensis</i>			<i>Quadrula quadrula</i>		
<i>Lampsilis abrupta</i>			<i>Simpsonaias ambigua</i>		
<i>Lampsilis cardium</i>			<i>Strophitus undulatus</i>		
<i>Lampsilis hydiana</i>			<i>Toxolasma lividus</i>		
<i>Lampsilis ornata</i>			<i>Toxolasma parvus</i>		
<i>Lampsilis powelli</i>			<i>Toxolasma texasensis</i>		
<i>Lampsilis rafinesqueana</i>			<i>Tritogonia verrucosa</i>		
<i>Lampsilis reeveiana</i>			<i>Truncilla donaciformis</i>		
<i>Lampsilis satura</i>			<i>Truncilla truncata</i>		
<i>Lampsilis streckeri</i>			<i>Uniomerus declivus</i>		
<i>Lampsilis teres</i>			<i>Uniomerus tetralasmus</i>		
<i>Lasmigona costata</i>			<i>Utterbackia imbecillis</i>		
<i>Lasmigona complanata</i>			<i>Venustaconcha ellipsiformis</i>		
<i>Leptodea fragilis</i>			<i>Venustaconcha pleasi</i>		
<i>Leptodea leptodon</i>			<i>Villosa arkansasensis</i>		
<i>Ligumia recta</i>			<i>Villosa iris</i>		
<i>Ligumia subrostrata</i>			<i>Villosa lienosa</i>		
<i>Megalonaias nervosa</i>			<i>Corbicula fluminea</i>		

NW 1/4 SE 1/4 SEC 10; T6N; R4E J.L. Harris, J.T. Fleming
 2-34 m deep slow current - paddlefish everywhere

Arkansas Freshwater Bivalves Field Data Sheet

Site STF-CC-33

Date 18 July 1995 County Cross Quad Wittsburg
 Drainage St. Francis Substrate silt/sand Width 30-35 m
 Location St. Francis Floodway ca. 0.3 km upstream of County Road 48N Bridge.

	Live	Dead		Live	Dead
<i>Actinonaias ligamentina</i>			<i>Obliquaria reflexa</i>		
<i>Alasmidonta marginata</i>			<i>Obovaria jacksoniana</i>		
<i>Alasmidonta viridis</i>			<i>Obovaria olivaria</i>		
<i>Amblema plicata</i>			<i>Plectomerus dombeyanus</i>		
<i>Anodonta suborbiculata</i>			<i>Pleurobema coccineum</i>		
<i>Anodontoides ferussacianus</i>			<i>Pleurobema pyramidatum</i>		
<i>Arcidens confragosus</i>	1		<i>Potamilus alatus</i>		
<i>Arkansia wheeleri</i>			<i>Potamilus capax</i>	3	
<i>Cyclonaias tuberculata</i>			<i>Potamilus ohiensis</i>	1	
<i>Cyprogenia aberti</i>			<i>Potamilus purpuratus</i>	1	
<i>Cumberlandia monodonta</i>			<i>Ptychobranthus occidentalis</i>		
<i>Ellipsaria lineolata</i>			<i>Pyganodon grandis</i>		
<i>Elliptio dilatata</i>			<i>Quadrula apiculata</i>		
<i>Epioblasma curtisi</i>			<i>Quadrula cylindrica</i>		
<i>Epioblasma triquetra</i>			<i>Quadrula fragosa</i>		
<i>Epioblasma turgidula</i>			<i>Quadrula metanevra</i>		
<i>Fusconaia ebena</i>			<i>Quadrula nodulata</i>		
<i>Fusconaia flava</i>			<i>Quadrula pustulosa</i>		
<i>Fusconaia ozarkensis</i>			<i>Quadrula quadrula</i>		
<i>Lampsilis abrupta</i>			<i>Simpsonaias ambigua</i>		
<i>Lampsilis cardium</i>			<i>Strophitus undulatus</i>		
<i>Lampsilis hydiana</i>			<i>Toxolasma lividus</i>		
<i>Lampsilis ornata</i>			<i>Toxolasma parvus</i>		
<i>Lampsilis powelli</i>			<i>Toxolasma texasensis</i>		
<i>Lampsilis rafinesqueana</i>			<i>Tritogonia verrucosa</i>		
<i>Lampsilis reeveiana</i>			<i>Truncilla donaciformis</i>		
<i>Lampsilis satura</i>			<i>Truncilla truncata</i>		
<i>Lampsilis streckeri</i>			<i>Uniomerus declivus</i>		
<i>Lampsilis teres</i>			<i>Uniomerus tetralasmus</i>		
<i>Lasmigona costata</i>			<i>Utterbackia imbecillis</i>		
<i>Lasmigona complanata</i>	1		<i>Venustaconcha ellipsiformis</i>		
<i>Leptodea fragilis</i>			<i>Venustaconcha pleasi</i>		
<i>Leptodea leptodon</i>			<i>Villosa arkansasensis</i>		
<i>Ligumia recta</i>			<i>Villosa iris</i>		
<i>Ligumia subrostrata</i>			<i>Villosa lienosa</i>		
<i>Megalonaias nervosa</i>			<i>Corbicula fluminea</i>		

SE 1/4 SE 1/4 sec D10; T6N; R4E

J.L. Harris, J.T. Fleming

2-3m deep; slow to moderate current velocity

Arkansas Freshwater Bivalves Field Data Sheet

Site STF-CC-34

Date 19 July 1995 County St. Francis Quad Wittsburg
 Drainage St. Francis Substrate Sand Width 30-35 m
 Location St. Francis Floodway ca 0.1 km downstream of County Road 48N Bridge

	Live	Dead		Live	Dead
<i>Actinonaias ligamentina</i>			<i>Obliquaria reflexa</i>		
<i>Alasmidonta marginata</i>			<i>Obovaria jacksoniana</i>		
<i>Alasmidonta viridis</i>			<i>Obovaria olivaria</i>		
<i>Amblema plicata</i>	1		<i>Plectomerus dombeyanus</i>		
<i>Anodonta suborbiculata</i>			<i>Pleurobema coccineum</i>		
<i>Anodontoides ferussacianus</i>			<i>Pleurobema pyramidatum</i>		
<i>Arcidens confragosus</i>			<i>Potamilus alatus</i>		
<i>Arkansia wheeleri</i>			<i>Potamilus capax</i>	1	5
<i>Cyclonaias tuberculata</i>			<i>Potamilus ohiensis</i>		
<i>Cyprogenia aberti</i>			<i>Potamilus purpuratus</i>	1	
<i>Cumberlandia monodonta</i>			<i>Ptychobranthus occidentalis</i>		
<i>Ellipsaria lineolata</i>			<i>Pyganodon grandis</i>		
<i>Elliptio dilatata</i>			<i>Quadrula apiculata</i>		
<i>Epioblasma curtisi</i>			<i>Quadrula cylindrica</i>		
<i>Epioblasma triquetra</i>			<i>Quadrula fragosa</i>		
<i>Epioblasma turgidula</i>			<i>Quadrula metanevra</i>		
<i>Fusconaia ebena</i>			<i>Quadrula nodulata</i>	2	
<i>Fusconaia flava</i>			<i>Quadrula pustulosa</i>		
<i>Fusconaia ozarkensis</i>			<i>Quadrula quadrula</i>		
<i>Lampsilis abrupta</i>			<i>Simpsonaias ambigua</i>		
<i>Lampsilis cardium</i>			<i>Strophitus undulatus</i>		
<i>Lampsilis hydiana</i>			<i>Toxolasma lividus</i>		
<i>Lampsilis ornata</i>			<i>Toxolasma parvus</i>		
<i>Lampsilis powelli</i>			<i>Toxolasma texasensis</i>		
<i>Lampsilis rafinesqueana</i>			<i>Tritogonia verrucosa</i>		
<i>Lampsilis reeveiana</i>			<i>Truncilla donaciformis</i>		
<i>Lampsilis satura</i>			<i>Truncilla truncata</i>		
<i>Lampsilis streckeri</i>			<i>Uniomerus declivus</i>		
<i>Lampsilis teres</i>	3		<i>Uniomerus tetralasmus</i>		
<i>Lasmigona costata</i>			<i>Utterbackia imbecillis</i>		
<i>Lasmigona complanata</i>	1		<i>Venustaconcha ellipsiformis</i>		
<i>Leptodea fragilis</i>	2	2	<i>Venustaconcha pleasi</i>		
<i>Leptodea leptodon</i>			<i>Villosa arkansasensis</i>		
<i>Ligumia recta</i>			<i>Villosa iris</i>		
<i>Ligumia subrostrata</i>			<i>Villosa lienosa</i>		
<i>Megalonaias nervosa</i>			<i>Corbicula fluminea</i>		

NW 1/4 NE 1/4 sec 15; T6N; R4E J.L. Harris, J.T. Fleming
 2-6 m deep; moderate to swift current velocity. Scour hole below bridge
 12-13 m deep. Few seams of clay/gravel substrate - mostly sand. Photos 16-18.
A. plicata - L = 43.3 mm, D = 32.5 mm; *P. purpuratus* - L = 68.4, D = 49.3

Arkansas Freshwater Bivalves Field Data Sheet

Site STF-CC-35Date 18 July 1995 County St. Francis Quad WittsburgDrainage St. Francis Substrate sand/clay Width 25-30 mLocation St. Francis Floodway ca. 0.3 Km downstream of County Road 48N Bridge.

	Live	Dead		Live	Dead
<i>Actinonaias ligamentina</i>			<i>Obliquaria reflexa</i>		
<i>Alasmidonta marginata</i>			<i>Obovaria jacksoniana</i>		
<i>Alasmidonta viridis</i>			<i>Obovaria olivaria</i>		
<i>Amblema plicata</i>			<i>Plectomerus dombeyanus</i>		
<i>Anodonta suborbiculata</i>			<i>Pleurobema coccineum</i>		
<i>Anodontoides ferussacianus</i>			<i>Pleurobema pyramidatum</i>		
<i>Arcidens confragosus</i>			<i>Potamilus alatus</i>		
<i>Arkansia wheeleri</i>			<i>Potamilus capax</i>		
<i>Cyclonaias tuberculata</i>			<i>Potamilus ohiensis</i>		
<i>Cyprogenia aberti</i>			<i>Potamilus purpuratus</i>		
<i>Cumberlandia monodonta</i>			<i>Ptychobranchus occidentalis</i>		
<i>Ellipsaria lineolata</i>			<i>Pyganodon grandis</i>		
<i>Elliptio dilatata</i>			<i>Quadrula apiculata</i>		
<i>Epioblasma curtisi</i>			<i>Quadrula cylindrica</i>		
<i>Epioblasma triquetra</i>			<i>Quadrula fragosa</i>		
<i>Epioblasma turgidula</i>			<i>Quadrula metanevra</i>		
<i>Fusconaia ebena</i>			<i>Quadrula nodulata</i>		
<i>Fusconaia flava</i>			<i>Quadrula pustulosa</i>		
<i>Fusconaia ozarkensis</i>			<i>Quadrula quadrula</i>		
<i>Lampsilis abrupta</i>			<i>Simpsonaias ambigua</i>		
<i>Lampsilis cardium</i>			<i>Strophitus undulatus</i>		
<i>Lampsilis hydiana</i>			<i>Toxolasma lividus</i>		
<i>Lampsilis ornata</i>			<i>Toxolasma parvus</i>		
<i>Lampsilis powelli</i>			<i>Toxolasma texasensis</i>		
<i>Lampsilis rafinesqueana</i>			<i>Tritogonia verrucosa</i>		
<i>Lampsilis reeveiana</i>			<i>Truncilla donaciformis</i>		
<i>Lampsilis satura</i>			<i>Truncilla truncata</i>		
<i>Lampsilis streckeri</i>			<i>Uniomerus declivus</i>		
<i>Lampsilis teres</i>			<i>Uniomerus tetralasmus</i>		
<i>Lasmigona costata</i>			<i>Utterbackia imbecillis</i>		
<i>Lasmigona complanata</i>			<i>Venustaconcha ellipsiformis</i>		
<i>Leptodea fragilis</i>			<i>Venustaconcha pleasi</i>		
<i>Leptodea leptodon</i>			<i>Villosa arkansasensis</i>		
<i>Ligumia recta</i>			<i>Villosa iris</i>		
<i>Ligumia subrostrata</i>			<i>Villosa lienosa</i>		
<i>Megalonaias nervosa</i>			<i>Corbicula fluminea</i>		

SW 1/4 NE 1/4 SEC 15; T6N; R4E J.L. Harris, J.T. Fleming

2-3 m deep; moderate current velocity. sand substrate in mid-channel;
slick, compacted clay on descending portion of banks. No mussels.

Arkansas Freshwater Bivalves Field Data Sheet

Site STF-CC-38

Date 18 July 1995 County St. Francis Quad Wittsburg
 Drainage St. Francis Substrate SAND Width ± 30-35 m
 Location St. Francis Floodway immediately upstream of County Road 48N Bridge.

	Live	Dead		Live	Dead
<i>Actinonaias ligamentina</i>			<i>Obliquaria reflexa</i>		
<i>Alasmidonta marginata</i>			<i>Obovaria jacksoniana</i>		
<i>Alasmidonta viridis</i>			<i>Obovaria olivaria</i>		
<i>Amblema plicata</i>			<i>Plectomerus dombeyanus</i>		
<i>Anodonta suborbiculata</i>			<i>Pleurobema coccineum</i>		
<i>Anodontoides ferussacianus</i>			<i>Pleurobema pyramidatum</i>		
<i>Arcidens confragosus</i>			<i>Potamilus alatus</i>		
<i>Arkansia wheeleri</i>			<i>Potamilus capax</i>		
<i>Cyclonaias tuberculata</i>			<i>Potamilus ohiensis</i>		
<i>Cyprogenia aberti</i>			<i>Potamilus purpuratus</i>		
<i>Cumberlandia monodonta</i>			<i>Ptychobranthus occidentalis</i>		
<i>Ellipsaria lineolata</i>			<i>Pyganodon grandis</i>		
<i>Elliptio dilatata</i>			<i>Quadrula apiculata</i>		
<i>Epioblasma curtisi</i>			<i>Quadrula cylindrica</i>		
<i>Epioblasma triquetra</i>			<i>Quadrula fragosa</i>		
<i>Epioblasma turgidula</i>			<i>Quadrula metanevra</i>		
<i>Fusconaia ebena</i>			<i>Quadrula nodulata</i>		
<i>Fusconaia flava</i>			<i>Quadrula pustulosa</i>		
<i>Fusconaia ozarkensis</i>			<i>Quadrula quadrula</i>		
<i>Lampsilis abrupta</i>			<i>Simpsonaias ambigua</i>		
<i>Lampsilis cardium</i>			<i>Strophitus undulatus</i>		
<i>Lampsilis hydiana</i>			<i>Toxolasma lividus</i>		
<i>Lampsilis ornata</i>			<i>Toxolasma parvus</i>		
<i>Lampsilis powelli</i>			<i>Toxolasma texasensis</i>		
<i>Lampsilis rafinesqueana</i>			<i>Tritogonia verrucosa</i>		
<i>Lampsilis reeveiana</i>			<i>Truncilla donaciformis</i>		
<i>Lampsilis satura</i>			<i>Truncilla truncata</i>		
<i>Lampsilis streckeri</i>			<i>Uniomerus declivus</i>		
<i>Lampsilis teres</i>	1		<i>Uniomerus tetralasmus</i>		
<i>Lasmigona costata</i>			<i>Utterbackia imbecillis</i>		
<i>Lasmigona complanata</i>			<i>Venustaconcha ellipsiformis</i>		
<i>Leptodea fragilis</i>			<i>Venustaconcha pleasi</i>		
<i>Leptodea leptodon</i>			<i>Villosa arkansasensis</i>		
<i>Ligumia recta</i>			<i>Villosa iris</i>		
<i>Ligumia subrostrata</i>			<i>Villosa lienosa</i>		
<i>Megalonaias nervosa</i>			<i>Corbicula fluminea</i>		

NW 1/4 NE 1/4 SEC 15; T6N; R4E J.L. Harris, J.T. Fleming
3-5 m deep; moderate - swift current velocity. Searched mid-channel
immediately upstream of bridge.

Arkansas Freshwater Bivalves Field Data Sheet

Site STF-CC-39

Date 18 July 1995 County St. Francis Quad Wittsburg
 Drainage St. Francis Substrate SAND Width 30-35m
 Location St. Francis Floodway ca. 0.5 km downstream of County Road 48N Bridge.

	Live	Dead		Live	Dead
<i>Actinonaias ligamentina</i>			<i>Obliquaria reflexa</i>		
<i>Alasmidonta marginata</i>			<i>Obovaria jacksoniana</i>		
<i>Alasmidonta viridis</i>			<i>Obovaria olivaria</i>		
<i>Amblema plicata</i>			<i>Plectomerus dombeyanus</i>		
<i>Anodonta suborbiculata</i>			<i>Pleurobema coccineum</i>		
<i>Anodontoides ferussacianus</i>			<i>Pleurobema pyramidatum</i>		
<i>Arcidens confragosus</i>			<i>Potamilus alatus</i>		
<i>Arkansia wheeleri</i>			<i>Potamilus capax</i>		
<i>Cyclonaias tuberculata</i>			<i>Potamilus ohioensis</i>		
<i>Cyrogenia aberti</i>			<i>Potamilus purpuratus</i>		
<i>Cumberlandia monodonta</i>			<i>Ptychobranhus occidentalis</i>		
<i>Ellipsaria lineolata</i>			<i>Pyganodon grandis</i>		
<i>Elliptio dilatata</i>			<i>Quadrula apiculata</i>		
<i>Epioblasma curtisi</i>			<i>Quadrula cylindrica</i>		
<i>Epioblasma triquetra</i>			<i>Quadrula fragosa</i>		
<i>Epioblasma turgidula</i>			<i>Quadrula metanevra</i>		
<i>Fusconaia ebena</i>			<i>Quadrula nodulata</i>		
<i>Fusconaia flava</i>			<i>Quadrula pustulosa</i>		
<i>Fusconaia ozarkensis</i>			<i>Quadrula quadrula</i>		
<i>Lampsilis abrupta</i>			<i>Simpsonaias ambigua</i>		
<i>Lampsilis cardium</i>			<i>Strophitus undulatus</i>		
<i>Lampsilis hydiana</i>			<i>Toxolasma lividus</i>		
<i>Lampsilis ornata</i>			<i>Toxolasma parvus</i>		
<i>Lampsilis powelli</i>			<i>Toxolasma texasensis</i>		
<i>Lampsilis rafinesqueana</i>			<i>Tritogonia verrucosa</i>		
<i>Lampsilis reeveiana</i>			<i>Truncilla donaciformis</i>		
<i>Lampsilis satura</i>			<i>Truncilla truncata</i>		
<i>Lampsilis streckeri</i>			<i>Uniomerus declivus</i>		
<i>Lampsilis teres</i>			<i>Uniomerus tetralasmus</i>		
<i>Lasmigona costata</i>			<i>Utterbackia imbecillis</i>		
<i>Lasmigona complanata</i>			<i>Venustaconcha ellipsiformis</i>		
<i>Leptodea fragilis</i>			<i>Venustaconcha pleasi</i>		
<i>Leptodea leptodon</i>			<i>Villosa arkansasensis</i>		
<i>Ligumia recta</i>			<i>Villosa iris</i>		
<i>Ligumia subrostrata</i>			<i>Villosa lienosa</i>		
<i>Megalonaias nervosa</i>			<i>Corbicula fluminea</i>		

SW 1/4 NE 1/4 SEC 15; T6N; R4E J.L. Harris, J.T. Fleming

2-3 m deep; current velocity moderate; shifting sand substrate.

No mussels.

Arkansas Freshwater Bivalves Field Data Sheet

Site StF-CC-42

Date 18 July 1995 County St. Francis Quad Madison
 Drainage St. Francis Substrate SAND Width 35-40 m
 Location St. Francis Floodway ca 2.0 Km upstream of County Road 485 Bridge.

	Live	Dead		Live	Dead
<i>Actinonaias ligamentina</i>			<i>Obliquaria reflexa</i>	1	
<i>Alasmidonta marginata</i>			<i>Obovaria jacksoniana</i>		
<i>Alasmidonta viridis</i>			<i>Obovaria olivaria</i>		
<i>Amblema plicata</i>	1		<i>Plectomerus dombeyanus</i>		
<i>Anodonta suborbiculata</i>			<i>Pleurobema coccineum</i>		
<i>Anodontoides ferussacianus</i>			<i>Pleurobema pyramidatum</i>		
<i>Arcidens confragosus</i>			<i>Potamilus alatus</i>		
<i>Arkansia wheeleri</i>			<i>Potamilus capax</i>	1	2
<i>Cyclonaias tuberculata</i>			<i>Potamilus ohioensis</i>	3	
<i>Cyprogenia aberti</i>			<i>Potamilus purpuratus</i>		
<i>Cumberlandia monodonta</i>			<i>Ptychobranhus occidentalis</i>		
<i>Ellipsaria lineolata</i>			<i>Pyganodon grandis</i>		
<i>Elliptio dilatata</i>			<i>Quadrula apiculata</i>		
<i>Epioblasma curtisi</i>			<i>Quadrula cylindrica</i>		
<i>Epioblasma triquetra</i>			<i>Quadrula fragosa</i>		
<i>Epioblasma turgidula</i>			<i>Quadrula metanevra</i>		
<i>Fusconaia ebena</i>			<i>Quadrula nodulata</i>	3	
<i>Fusconaia flava</i>			<i>Quadrula pustulosa</i>		
<i>Fusconaia ozarkensis</i>			<i>Quadrula quadrula</i>	1	
<i>Lampsilis abrupta</i>			<i>Simpsonaias ambigua</i>		
<i>Lampsilis cardium</i>			<i>Strophitus undulatus</i>		
<i>Lampsilis hydiana</i>			<i>Toxolasma lividus</i>		
<i>Lampsilis ornata</i>			<i>Toxolasma parvus</i>		
<i>Lampsilis powelli</i>			<i>Toxolasma texasensis</i>		
<i>Lampsilis rafinesqueana</i>			<i>Tritogonia verrucosa</i>		
<i>Lampsilis reeveiana</i>			<i>Truncilla donaciformis</i>		
<i>Lampsilis satura</i>			<i>Truncilla truncata</i>		
<i>Lampsilis streckeri</i>			<i>Uniomerus declivus</i>		
<i>Lampsilis teres</i>			<i>Uniomerus tetralasmus</i>		
<i>Lasmigona costata</i>			<i>Utterbackia imbecillis</i>		
<i>Lasmigona complanata</i>	4		<i>Venustaconcha ellipsiformis</i>		
<i>Leptodea fragilis</i>			<i>Venustaconcha pleasi</i>		
<i>Leptodea leptodon</i>			<i>Villosa arkansasensis</i>		
<i>Ligumia recta</i>			<i>Villosa iris</i>		
<i>Ligumia subrostrata</i>			<i>Villosa lienosa</i>		
<i>Megalonaias nervosa</i>			<i>Corbicula fluminea</i>		

NE 1/4 SE 1/4 sec 21; T6N; R4E J.L. Harris, J.T. Fleming

1-2 m deep; moderate to swift current velocity. Slight bendway; substrate sand to clay balls. Nice substrate. Photo 23

Arkansas Freshwater Bivalves Field Data Sheet

Site STF-CC-43

Date 18 July 1995 County St. Francis Quad Madison

Drainage St. Francis Substrate SAND/silt Width 35-40 m

Location St. Francis Floodway ca. 1.8 km upstream of County Road 485 Bridge.

	Live	Dead		Live	Dead
<i>Actinonaias ligamentina</i>			<i>Obliquaria reflexa</i>		
<i>Alasmidonta marginata</i>			<i>Obovaria jacksoniana</i>		
<i>Alasmidonta viridis</i>			<i>Obovaria olivaria</i>		
<i>Amblema plicata</i>			<i>Plectomerus dombeyanus</i>		
<i>Anodonta suborbiculata</i>			<i>Pleurobema coccineum</i>		
<i>Anodontoides ferussacianus</i>			<i>Pleurobema pyramidatum</i>		
<i>Arcidens confragosus</i>			<i>Potamilus alatus</i>		
<i>Arkansia wheeleri</i>			<i>Potamilus capax</i>		2
<i>Cyclonaias tuberculata</i>			<i>Potamilus ohiensis</i>		
<i>Cyprogenia aberti</i>			<i>Potamilus purpuratus</i>		
<i>Cumberlandia monodonta</i>			<i>Ptychobranthus occidentalis</i>		
<i>Ellipsaria lineolata</i>			<i>Pyganodon grandis</i>		
<i>Elliptio dilatata</i>			<i>Quadrula apiculata</i>		
<i>Epioblasma curtisi</i>			<i>Quadrula cylindrica</i>		
<i>Epioblasma triquetra</i>			<i>Quadrula fragosa</i>		
<i>Epioblasma turgidula</i>			<i>Quadrula metanevra</i>		
<i>Fusconaia ebena</i>			<i>Quadrula nodulata</i>		
<i>Fusconaia flava</i>			<i>Quadrula pustulosa</i>		
<i>Fusconaia ozarkensis</i>			<i>Quadrula quadrula</i>		
<i>Lampsilis abrupta</i>			<i>Simpsonaias ambigua</i>		
<i>Lampsilis cardium</i>			<i>Strophitus undulatus</i>		
<i>Lampsilis hydiana</i>			<i>Toxolasma lividus</i>		
<i>Lampsilis ornata</i>			<i>Toxolasma parvus</i>		
<i>Lampsilis powelli</i>			<i>Toxolasma texasensis</i>		
<i>Lampsilis rafinesqueana</i>			<i>Tritogonia verrucosa</i>		
<i>Lampsilis reeveiana</i>			<i>Truncilla donaciformis</i>		
<i>Lampsilis satura</i>			<i>Truncilla truncata</i>		
<i>Lampsilis streckeri</i>			<i>Uniomerus declivus</i>		
<i>Lampsilis teres</i>			<i>Uniomerus tetralasmus</i>		
<i>Lasmigona costata</i>			<i>Utterbackia imbecillis</i>		
<i>Lasmigona complanata</i>			<i>Venustaconcha ellipsiformis</i>		
<i>Leptodea fragilis</i>			<i>Venustaconcha pleasi</i>		
<i>Leptodea leptodon</i>			<i>Villosa arkansasensis</i>		
<i>Ligumia recta</i>			<i>Villosa iris</i>		
<i>Ligumia subrostrata</i>			<i>Villosa lienosa</i>		
<i>Megalonaias nervosa</i>			<i>Corbicula fluminea</i>		

NW¹/₄ SE¹/₄ sec 21; T6N; R4E. J.L. Harris, J.T. Fleming
 1-2 m deep; moderate velocity - shifting sand

Arkansas Freshwater Bivalves Field Data Sheet

Site STF-CC-44

Date 18 July 1995 County St. Francis Quad Madison

Drainage St. Francis Substrate clay/silt Width 30-35m

Location St. Francis Floodway ca. 0.7 km upstream of County Road 485 Bridge

	Live	Dead		Live	Dead
<i>Actinonaias ligamentina</i>			<i>Obliquaria reflexa</i>		
<i>Alasmidonta marginata</i>			<i>Obovaria jacksoniana</i>		
<i>Alasmidonta viridis</i>			<i>Obovaria olivaria</i>		
<i>Amblema plicata</i>			<i>Plectomerus dombeyanus</i>		
<i>Anodonta suborbiculata</i>			<i>Pleurobema coccineum</i>		
<i>Anodontoides ferussacianus</i>			<i>Pleurobema pyramidatum</i>		
<i>Arcidens confragosus</i>			<i>Potamilus alatus</i>		
<i>Arkansia wheeleri</i>			<i>Potamilus capax</i>	9	
<i>Cyclonaias tuberculata</i>			<i>Potamilus ohioensis</i>		
<i>Cyprogenia aberti</i>			<i>Potamilus purpuratus</i>	3	1
<i>Cumberlandia monodonta</i>			<i>Ptychobranhus occidentalis</i>		
<i>Ellipsaria lineolata</i>			<i>Pyganodon grandis</i>		
<i>Elliptio dilatata</i>			<i>Quadrula apicuiata</i>		
<i>Epioblasma curtisi</i>			<i>Quadrula cylindrica</i>		
<i>Epioblasma triquetra</i>			<i>Quadrula fragosa</i>		
<i>Epioblasma turgidula</i>			<i>Quadrula metanevra</i>		
<i>Fusconaia ebena</i>			<i>Quadrula nodulata</i>		
<i>Fusconaia flava</i>			<i>Quadrula pustulosa</i>		
<i>Fusconaia ozarkensis</i>			<i>Quadrula quadrula</i>		
<i>Lampsilis abrupta</i>			<i>Simpsonaias ambigua</i>		
<i>Lampsilis cardium</i>			<i>Strophitus undulatus</i>		
<i>Lampsilis hydiana</i>			<i>Toxolasma lividus</i>		
<i>Lampsilis ornata</i>			<i>Toxolasma parvus</i>		
<i>Lampsilis powelli</i>			<i>Toxolasma texasensis</i>		
<i>Lampsilis rafinesqueana</i>			<i>Tritogonia verrucosa</i>		
<i>Lampsilis reeveiana</i>			<i>Truncilla donaciformis</i>		
<i>Lampsilis satura</i>			<i>Truncilla truncata</i>		
<i>Lampsilis streckeri</i>			<i>Uniomerus declivus</i>		
<i>Lampsilis teres</i>			<i>Uniomerus tetralasmus</i>		
<i>Lasmigona costata</i>			<i>Utterbackia imbecillis</i>		
<i>Lasmigona complanata</i>			<i>Venustaconcha ellipsiformis</i>		
<i>Leptodea fragilis</i>	2		<i>Venustaconcha pleasi</i>		
<i>Leptodea leptodon</i>			<i>Villosa arkansasensis</i>		
<i>Ligumia recta</i>			<i>Villosa iris</i>		
<i>Ligumia subrostrata</i>			<i>Villosa lienosa</i>		
<i>Megalonaias nervosa</i>			<i>Corbicula fluminea</i>		

sw 1/4 sw 1/4 sec 21; T6N; R4E J.L. Harris, J.T. Fleming

1-2 m deep; clay substrate - slow current velocity -

mussels very scattered

Arkansas Freshwater Bivalves Field Data Sheet

Site STF-CC-45

Date 19 July 1995 County St. Francis Quad Madison
 Drainage St. Francis Substrate gravel/riprap Width 30-35 m
 Location St. Francis Floodway 25m downstream of County Road 485 Bridge

	Live	Dead		Live	Dead
<i>Actinonaias ligamentina</i>			<i>Obliquaria reflexa</i>		
<i>Alasmidonta marginata</i>			<i>Obovaria jacksoniana</i>		
<i>Alasmidonta viridis</i>			<i>Obovaria olivaria</i>		
<i>Amblema plicata</i>			<i>Plectomerus dombeyanus</i>		
<i>Anodonta suborbiculata</i>			<i>Pleurobema coccineum</i>		
<i>Anodontoides ferussacianus</i>			<i>Pleurobema pyramidatum</i>		
<i>Arcidens confragosus</i>			<i>Potamilus alatus</i>		
<i>Arkansia wheeleri</i>			<i>Potamilus capax</i>	1	
<i>Cyclonaias tuberculata</i>			<i>Potamilus ohioensis</i>		
<i>Cyprogenia aberti</i>			<i>Potamilus purpuratus</i>		
<i>Cumberlandia monodonta</i>			<i>Ptychobranthus occidentalis</i>		
<i>Ellipsaria lineolata</i>			<i>Pyganodon grandis</i>		
<i>Elliptio dilatata</i>			<i>Quadrula apiculata</i>		
<i>Epioblasma curtisi</i>			<i>Quadrula cylindrica</i>		
<i>Epioblasma triquetra</i>			<i>Quadrula fragosa</i>		
<i>Epioblasma turgidula</i>			<i>Quadrula metanevra</i>		
<i>Fusconaia ebena</i>			<i>Quadrula nodulata</i>		
<i>Fusconaia flava</i>			<i>Quadrula pustulosa</i>		
<i>Fusconaia ozarkensis</i>			<i>Quadrula quadrula</i>	1	
<i>Lampsilis abrupta</i>			<i>Simpsonaias ambigua</i>		
<i>Lampsilis cardium</i>			<i>Strophitus undulatus</i>		
<i>Lampsilis hydiana</i>			<i>Toxolasma lividus</i>		
<i>Lampsilis ornata</i>			<i>Toxolasma parvus</i>		
<i>Lampsilis powelli</i>			<i>Toxolasma texasensis</i>		
<i>Lampsilis rafinesqueana</i>			<i>Tritogonia verrucosa</i>		
<i>Lampsilis reeveiana</i>			<i>Truncilla donaciformis</i>		
<i>Lampsilis satura</i>			<i>Truncilla truncata</i>		
<i>Lampsilis streckeri</i>			<i>Uniomerus declivus</i>		
<i>Lampsilis teres</i>			<i>Uniomerus tetralasmus</i>		
<i>Lasmigona costata</i>			<i>Utterbackia imbecillis</i>		
<i>Lasmigona complanata</i>			<i>Venustaconcha ellipsiformis</i>		
<i>Leptodea fragilis</i>	1		<i>Venustaconcha pleasi</i>		
<i>Leptodea leptodon</i>			<i>Villosa arkansasensis</i>		
<i>Ligumia recta</i>			<i>Villosa iris</i>		
<i>Ligumia subrostrata</i>			<i>Villosa lienosa</i>		
<i>Megalonaias nervosa</i>			<i>Corbicula fluminea</i>		

NE 1/4 NE 1/4 Sec 29; T6N; R4E J.L. Harris, J.T. Fleming
2-7 m deep; current velocity swift; riprap below bridge descending to
gravel substrate at base. *P. capax* L 91.0, D 67.0, W 58.2

Arkansas Freshwater Bivalves Field Data Sheet

Site STF-CC-46Date 19 July 1995 County St. Francis Quad MadisonDrainage St. Francis Substrate sand/fine silt Width 30-35 mLocation St. Francis Floodway ca. 100 m downstream of County Road 485 Bridge

	Live	Dead		Live	Dead
<i>Actinonaias ligamentina</i>			<i>Obliquaria reflexa</i>		
<i>Alasmidonta marginata</i>			<i>Obovaria jacksoniana</i>		
<i>Alasmidonta viridis</i>			<i>Obovaria olivaria</i>		
<i>Amblema plicata</i>			<i>Plectomerus dombeyanus</i>		
<i>Anodonta suborbiculata</i>			<i>Pleurobema coccineum</i>		
<i>Anodontoides ferussacianus</i>			<i>Pleurobema pyramidatum</i>		
<i>Arcidens confragosus</i>			<i>Potamilus alatus</i>		
<i>Arkansia wheeleri</i>			<i>Potamilus capax</i>	1	
<i>Cyclonaias tuberculata</i>			<i>Potamilus ohiensis</i>		
<i>Cyprogenia aberti</i>			<i>Potamilus purpuratus</i>		
<i>Cumberlandia monodonta</i>			<i>Ptychobranthus occidentalis</i>		
<i>Ellipsaria lineolata</i>			<i>Pyganodon grandis</i>		
<i>Elliptio dilatata</i>			<i>Quadrula apiculata</i>		
<i>Epioblasma curtisi</i>			<i>Quadrula cylindrica</i>		
<i>Epioblasma triquetra</i>			<i>Quadrula fragosa</i>		
<i>Epioblasma turgidula</i>			<i>Quadrula metanevra</i>		
<i>Fusconaia ebena</i>			<i>Quadrula nodulata</i>	1	
<i>Fusconaia flava</i>			<i>Quadrula pustulosa</i>		
<i>Fusconaia ozarkensis</i>			<i>Quadrula quadrula</i>		
<i>Lampsilis abrupta</i>			<i>Simpsonaias ambigua</i>		
<i>Lampsilis cardium</i>			<i>Strophitus undulatus</i>		
<i>Lampsilis hydiana</i>			<i>Toxolasma lividus</i>		
<i>Lampsilis ornata</i>			<i>Toxolasma parvus</i>		
<i>Lampsilis powelli</i>			<i>Toxolasma texasensis</i>		
<i>Lampsilis rafinesqueana</i>			<i>Tritogonia verrucosa</i>		
<i>Lampsilis reeveiana</i>			<i>Truncilla donaciformis</i>		
<i>Lampsilis satura</i>			<i>Truncilla truncata</i>		
<i>Lampsilis streckeri</i>			<i>Uniomerus declivus</i>		
<i>Lampsilis teres</i>			<i>Uniomerus tetralasmus</i>		
<i>Lasmigona costata</i>			<i>Utterbackia imbecillis</i>		
<i>Lasmigona complanata</i>			<i>Venustaconcha ellipsiformis</i>		
<i>Leptodea fragilis</i>		++	<i>Venustaconcha pleasi</i>		
<i>Leptodea leptodon</i>			<i>Villosa arkansasensis</i>		
<i>Ligumia recta</i>			<i>Villosa iris</i>		
<i>Ligumia subrostrata</i>			<i>Villosa lienosa</i>		
<i>Megalonaias nervosa</i>			<i>Corbicula fluminea</i>		

NW 1/4 NE 1/4 sec 29; T6N; R4E J.L. Harris, J.T. Fleming

5-7 m deep; slow velocity Descending clay bank, Fine silt in mid-channel
Shell diggers have worked this bottom (pockets) P. capax L128.6, D89.2, W 72.7

Arkansas Freshwater Bivalves Field Data Sheet

Site STF-CC-47

Date 19 July 1995 County St. Francis Quad Wittsburg
 Drainage St. Francis Substrate Sand/clay Width 35-40m
 Location St. Francis Floodway ca. 100 m downstream of County Road 48N Bridge.

	Live	Dead		Live	Dead
<i>Actinonaias ligamentina</i>			<i>Obliquaria reflexa</i>		
<i>Alasmidonta marginata</i>			<i>Obovaria jacksoniana</i>		
<i>Alasmidonta viridis</i>			<i>Obovaria olivaria</i>		
<i>Amblema plicata</i>			<i>Plectomerus dombeyanus</i>		
<i>Anodonta suborbiculata</i>			<i>Pleurobema coccineum</i>		
<i>Anodontoides ferussacianus</i>			<i>Pleurobema pyramidatum</i>		
<i>Arcidens confragosus</i>			<i>Potamilus alatus</i>		
<i>Arkansia wheeleri</i>			<i>Potamilus capax</i>	1	1
<i>Cyclonaias tuberculata</i>			<i>Potamilus ohiensis</i>		
<i>Cyprogenia aberti</i>			<i>Potamilus purpuratus</i>		
<i>Cumberlandia monodonta</i>			<i>Ptychobranthus occidentalis</i>		
<i>Ellipsaria lineolata</i>			<i>Pyganodon grandis</i>		
<i>Elliptio dilatata</i>			<i>Quadrula apiculata</i>		
<i>Epioblasma curtisi</i>			<i>Quadrula cylindrica</i>		
<i>Epioblasma triquetra</i>			<i>Quadrula fragosa</i>		
<i>Epioblasma turgidula</i>			<i>Quadrula metanevra</i>		
<i>Fusconaia ebena</i>			<i>Quadrula nodulata</i>		
<i>Fusconaia flava</i>			<i>Quadrula pustulosa</i>	1	
<i>Fusconaia ozarkensis</i>			<i>Quadrula quadrula</i>		
<i>Lampsilis abrupta</i>			<i>Simpsonaias ambigua</i>		
<i>Lampsilis cardium</i>			<i>Strophitus undulatus</i>		
<i>Lampsilis hydiana</i>			<i>Toxolasma lividus</i>		
<i>Lampsilis ornata</i>			<i>Toxolasma parvus</i>		
<i>Lampsilis powelli</i>			<i>Toxolasma texasensis</i>		
<i>Lampsilis rafinesqueana</i>			<i>Tritogonia verrucosa</i>		
<i>Lampsilis reeveiana</i>			<i>Truncilla donaciformis</i>		
<i>Lampsilis satura</i>			<i>Truncilla truncata</i>		
<i>Lampsilis streckeri</i>			<i>Uniomerus declivus</i>		
<i>Lampsilis teres</i>			<i>Uniomerus tetralasmus</i>		
<i>Lasmigona costata</i>			<i>Utterbackia imbecillis</i>		
<i>Lasmigona complanata</i>			<i>Venustaconcha ellipsiformis</i>		
<i>Leptodea fragilis</i>	11		<i>Venustaconcha pleasi</i>		
<i>Leptodea leptodon</i>			<i>Villosa arkansasensis</i>		
<i>Ligumia recta</i>			<i>Villosa iris</i>		
<i>Ligumia subrostrata</i>			<i>Villosa lienosa</i>		
<i>Megalonaias nervosa</i>			<i>Corbicula fluminea</i>		

NW 1/4 NE 1/4 Sec 15; T6N; R4E. J.L. Harris, J.T. Fleming
5-9 m deep; water velocity slow to swift. Descending walls firm sand,
small thalweg on downstream side of scour hole w/ clay substrate - mussels
in the sand. P. Capax L84.6, D63.6, W54.2

Arkansas Freshwater Bivalves Field Data Sheet

Site SF-CC-SB1

Date 18 July 1995 County St. Francis Quad Wittsburg

Drainage St. Francis Substrate SAND BAR Width 25-30 m

Location St. Francis Floodway ca. 1.4 km downstream of County Road 48N Bridge

	Live	Dead		Live	Dead
<i>Actinonaias ligamentina</i>			<i>Obliquaria reflexa</i>		
<i>Alasmidonta marginata</i>			<i>Obovaria jacksoniana</i>		
<i>Alasmidonta viridis</i>			<i>Obovaria olivaria</i>		
<i>Ambiema plicata</i>			<i>Plectomerus dombeyanus</i>		
<i>Anodonta suborbiculata</i>			<i>Pleurobema coccineum</i>		
<i>Anodontoides ferussacianus</i>			<i>Pleurobema pyramidatum</i>		
<i>Arcidens confragosus</i>			<i>Potamilus alatus</i>		
<i>Arkansia wheeleri</i>			<i>Potamilus capax</i>		3
<i>Cyclonaias tuberculata</i>			<i>Potamilus ohiensis</i>		7
<i>Cyprogenia aberti</i>			<i>Potamilus purpuratus</i>		
<i>Cumberlandia monodonta</i>			<i>Ptychobranthus occidentalis</i>		
<i>Ellipsaria lineolata</i>			<i>Pyganodon grandis</i>		
<i>Elliptio dilatata</i>			<i>Quadrula apiculata</i>		
<i>Epioblasma curtisi</i>			<i>Quadrula cylindrica</i>		
<i>Epioblasma triquetra</i>			<i>Quadrula fragosa</i>		
<i>Epioblasma turgidula</i>			<i>Quadrula metanevra</i>		
<i>Fusconaia ebena</i>			<i>Quadrula nodulata</i>		
<i>Fusconaia flava</i>			<i>Quadrula pustulosa</i>		
<i>Fusconaia ozarkensis</i>			<i>Quadrula quadrula</i>		
<i>Lampsilis abrupta</i>			<i>Simpsonaias ambigua</i>		
<i>Lampsilis cardium</i>			<i>Strophitus undulatus</i>		
<i>Lampsilis hydiana</i>			<i>Toxolasma lividus</i>		
<i>Lampsilis ornata</i>			<i>Toxolasma parvus</i>		
<i>Lampsilis powelli</i>			<i>Toxolasma texasensis</i>		
<i>Lampsilis rafinesqueana</i>			<i>Tritogonia verrucosa</i>		
<i>Lampsilis reeveiana</i>			<i>Truncilla donaciformis</i>		
<i>Lampsilis satura</i>			<i>Truncilla truncata</i>		
<i>Lampsilis streckeri</i>			<i>Uniomerus declivus</i>		
<i>Lampsilis teres</i>			<i>Uniomerus tetralasmus</i>		
<i>Lasmigona costata</i>			<i>Utterbackia imbecillis</i>		
<i>Lasmigona complanata</i>			<i>Venustaconcha ellipsiformis</i>		
<i>Leptodea fragilis</i>		3	<i>Venustaconcha pleasi</i>		
<i>Leptodea leptodon</i>			<i>Villosa arkansasensis</i>		
<i>Ligumia recta</i>			<i>Villosa iris</i>		
<i>Ligumia subrostrata</i>			<i>Villosa lienosa</i>		
<i>Megalonaias nervosa</i>			<i>Corbicula fluminea</i>		

SW 1/4 SW 1/4 SEC 15; T6N; R4E J.L. Harris, J.T. Fleming

SEARCHED SANDBAR ON LHB - ca 50-75 m SEARCH AREA. PHOTOS 19-22

P. capax lengths = 65.6 (10+ yrs old), 46.8, 70.2

Arkansas Freshwater Bivalves Field Data Sheet

Site STF-CC-SB2

Date 18 July 1995 County St. Francis Quad Madison
 Drainage St. Francis Substrate SAND BAR Width 30-35 m
 Location St. Francis Floodway ca. 1.7 km upstream of County Road 485 Bridge.

	Live	Dead		Live	Dead
<i>Actinonaias ligamentina</i>			<i>Obliquaria reflexa</i>	1	
<i>Alasmidonta marginata</i>			<i>Obovaria jacksoniana</i>		
<i>Alasmidonta viridis</i>			<i>Obovaria olivaria</i>		
<i>Amblema plicata</i>	2		<i>Plectomerus dombeyanus</i>		
<i>Anodonta suborbiculata</i>			<i>Pleurobema coccineum</i>		
<i>Anodontoides ferussacianus</i>			<i>Pleurobema pyramidatum</i>		
<i>Arcidens confragosus</i>			<i>Potamilus alatus</i>		
<i>Arkansia wheeleri</i>			<i>Potamilus capax</i>	3	5
<i>Cyclonaias tuberculata</i>			<i>Potamilus ohioensis</i>		2
<i>Cyprogenia aberti</i>			<i>Potamilus purpuratus</i>		
<i>Cumberlandia monodonta</i>			<i>Ptychobranhus occidentalis</i>		
<i>Ellipsaria lineolata</i>			<i>Pyganodon grandis</i>		
<i>Elliptio dilatata</i>			<i>Quadrula apiculata</i>		
<i>Epioblasma curtisi</i>			<i>Quadrula cylindrica</i>		
<i>Epioblasma triquetra</i>			<i>Quadrula fragosa</i>		
<i>Epioblasma turgidula</i>			<i>Quadrula metanevra</i>		
<i>Fusconaia ebena</i>			<i>Quadrula nodulata</i>		
<i>Fusconaia flava</i>			<i>Quadrula pustulosa</i>		
<i>Fusconaia ozarkensis</i>			<i>Quadrula quadrula</i>	1	
<i>Lampsilis abrupta</i>			<i>Simpsonaias ambigua</i>		
<i>Lampsilis cardium</i>			<i>Strophitus undulatus</i>		
<i>Lampsilis hydiana</i>			<i>Toxolasma lividus</i>		
<i>Lampsilis ornata</i>			<i>Toxolasma parvus</i>		
<i>Lampsilis powelli</i>			<i>Toxolasma texasensis</i>		
<i>Lampsilis rafinesqueana</i>			<i>Tritogonia verrucosa</i>		
<i>Lampsilis reeveiana</i>			<i>Truncilla donaciformis</i>		
<i>Lampsilis satura</i>			<i>Truncilla truncata</i>		
<i>Lampsilis streckeri</i>			<i>Uniomerus declivus</i>		
<i>Lampsilis teres</i>			<i>Uniomerus tetralasmus</i>		
<i>Lasmigona costata</i>			<i>Utterbackia imbecillis</i>		
<i>Lasmigona complanata</i>			<i>Venustaconcha ellipsiformis</i>		
<i>Leptodea fragilis</i>		5	<i>Venustaconcha pleasi</i>		
<i>Leptodea leptodon</i>			<i>Villosa arkansasensis</i>		
<i>Ligumia recta</i>			<i>Villosa iris</i>		
<i>Ligumia subrostrata</i>			<i>Villosa lienosa</i>		
<i>Megalonaias nervosa</i>			<i>Corbicula fluminea</i>		

NW 1/4 SE 1/4 Sec 21; T6N; R4E J.L. Harris, J.T. Fleming

SAND BAR search covered ca. 100-125 m. Live mussels in troughs behind SAND ridges. *A. plicata* - L41.6, D31.4, 4+ yrs; L31.4, D23.4 (3+ yrs)

Obliquaria - D 23.8 (4+ yrs)

Arkansas Freshwater Bivalves Field Data Sheet

Site STF-CC-47Date 19 July 1995 County St. Francis Quad WittsburgDrainage St. Francis Substrate Sand/clay Width 35-40mLocation St. Francis Hoodway ca. 100 m downstream of County Road 48N Bridge.

	Live	Dead		Live	Dead
<i>Actinonaias ligamentina</i>			<i>Obliquaria reflexa</i>		
<i>Alasmidonta marginata</i>			<i>Obovaria jacksoniana</i>		
<i>Alasmidonta viridis</i>			<i>Obovaria olivaria</i>		
<i>Amblema plicata</i>			<i>Plectomerus dombeyanus</i>		
<i>Anodonta suborbiculata</i>			<i>Pleurobema coccineum</i>		
<i>Anodontoides ferussacianus</i>			<i>Pleurobema pyramidatum</i>		
<i>Arcidens confragosus</i>			<i>Potamilus alatus</i>		
<i>Arkansia wheeleri</i>			<i>Potamilus capax</i>	1	1
<i>Cyclonaias tuberculata</i>			<i>Potamilus ohiensis</i>		
<i>Cyprogenia aberti</i>			<i>Potamilus purpuratus</i>		
<i>Cumberlandia monodonta</i>			<i>Ptychobranthus occidentalis</i>		
<i>Ellipsaria lineolata</i>			<i>Pyganodon grandis</i>		
<i>Elliptio dilatata</i>			<i>Quadrula apiculata</i>		
<i>Epioblasma curtisi</i>			<i>Quadrula cylindrica</i>		
<i>Epioblasma triquetra</i>			<i>Quadrula fragosa</i>		
<i>Epioblasma turgidula</i>			<i>Quadrula metanevra</i>		
<i>Fusconaia ebena</i>			<i>Quadrula nodulata</i>		
<i>Fusconaia flava</i>			<i>Quadrula pustulosa</i>	1	
<i>Fusconaia ozarkensis</i>			<i>Quadrula quadrula</i>		
<i>Lampsilis abrupta</i>			<i>Simpsonaias ambigua</i>		
<i>Lampsilis cardium</i>			<i>Strophitus undulatus</i>		
<i>Lampsilis hydiana</i>			<i>Toxolasma lividus</i>		
<i>Lampsilis ornata</i>			<i>Toxolasma parvus</i>		
<i>Lampsilis powelli</i>			<i>Toxolasma texasensis</i>		
<i>Lampsilis rafinesqueana</i>			<i>Tritogonia verrucosa</i>		
<i>Lampsilis reeveiana</i>			<i>Truncilla donaciformis</i>		
<i>Lampsilis satura</i>			<i>Truncilla truncata</i>		
<i>Lampsilis streckeri</i>			<i>Uniomerus declivus</i>		
<i>Lampsilis teres</i>			<i>Uniomerus tetralasmus</i>		
<i>Lasmigona costata</i>			<i>Utterbackia imbecillis</i>		
<i>Lasmigona complanata</i>			<i>Venustaconcha ellipsiformis</i>		
<i>Leptodea fragilis</i>	11		<i>Venustaconcha pleasi</i>		
<i>Leptodea leptodon</i>			<i>Villosa arkansasensis</i>		
<i>Ligumia recta</i>			<i>Villosa iris</i>		
<i>Ligumia subrostrata</i>			<i>Villosa lienosa</i>		
<i>Megalonaias nervosa</i>			<i>Corbicula fluminea</i>		

NW 1/4 NE 1/4 Sec 15; T6N; R4E. J.L. Harris, J.T. Fleming

5-9 m deep; water velocity slow to swift. Descending walls firm sand, small thalweg on downstream side of scour hole w/ clay substrate - mussels in the sand. P. Capax L84.6, D63.6, W54.2

Arkansas Freshwater Bivalves Field Data Sheet

Site SF-CC-SB1

Date 18 July 1995 County St. Francis Quad Wittsburg

Drainage St. Francis Substrate SAND BAR Width 25-30 m

Location St. Francis Floodway ca. 1.4 km downstream of County Road 48N Bridge

	Live	Dead		Live	Dead
<i>Actinonaias ligamentina</i>			<i>Obliquaria reflexa</i>		
<i>Alasmidonta marginata</i>			<i>Obovaria jacksoniana</i>		
<i>Alasmidonta viridis</i>			<i>Obovaria olivaria</i>		
<i>Amblema plicata</i>			<i>Plectomerus dombeyanus</i>		
<i>Anodonta suborbiculata</i>			<i>Pleurobema coccineum</i>		
<i>Anodontoides ferussacianus</i>			<i>Pleurobema pyramidatum</i>		
<i>Arcidens confragosus</i>			<i>Potamilus alatus</i>		
<i>Arkansia wheeleri</i>			<i>Potamilus capax</i>		3
<i>Cyclonaias tuberculata</i>			<i>Potamilus ohiensis</i>		7
<i>Cyprogenia aberti</i>			<i>Potamilus purpuratus</i>		
<i>Cumberlandia monodonta</i>			<i>Ptychobranthus occidentalis</i>		
<i>Ellipsaria lineolata</i>			<i>Pyganodon grandis</i>		
<i>Elliptio dilatata</i>			<i>Quadrula apiculata</i>		
<i>Epioblasma curtisi</i>			<i>Quadrula cylindrica</i>		
<i>Epioblasma triquetra</i>			<i>Quadrula fragosa</i>		
<i>Epioblasma turgidula</i>			<i>Quadrula metanevra</i>		
<i>Fusconaia ebena</i>			<i>Quadrula nodulata</i>		
<i>Fusconaia flava</i>			<i>Quadrula pustulosa</i>		
<i>Fusconaia ozarkensis</i>			<i>Quadrula quadrula</i>		
<i>Lampsilis abrupta</i>			<i>Simpsonaias ambigua</i>		
<i>Lampsilis cardium</i>			<i>Strophitus undulatus</i>		
<i>Lampsilis hydiana</i>			<i>Toxolasma lividus</i>		
<i>Lampsilis ornata</i>			<i>Toxolasma parvus</i>		
<i>Lampsilis powelli</i>			<i>Toxolasma texasensis</i>		
<i>Lampsilis rafinesqueana</i>			<i>Tritogonia verrucosa</i>		
<i>Lampsilis reeveiana</i>			<i>Truncilla donaciformis</i>		
<i>Lampsilis satura</i>			<i>Truncilla truncata</i>		
<i>Lampsilis streckeri</i>			<i>Uniomerus declivus</i>		
<i>Lampsilis teres</i>			<i>Uniomerus tetralasmus</i>		
<i>Lasmigona costata</i>			<i>Utterbackia imbecillis</i>		
<i>Lasmigona complanata</i>			<i>Venustaconcha ellipsiformis</i>		
<i>Leptodea fragilis</i>		3	<i>Venustaconcha pleasi</i>		
<i>Leptodea leptodon</i>			<i>Villosa arkansasensis</i>		
<i>Ligumia recta</i>			<i>Villosa iris</i>		
<i>Ligumia subrostrata</i>			<i>Villosa lienosa</i>		
<i>Megalonaias nervosa</i>			<i>Corbicula fluminea</i>		

sw 1/4 sw 1/4 sec 15; T6N; R4E J.L. Harris, J.T. Fleming
SEARCHED sandbar on LHB - ca 50-75 m SEARCH area. Photos 19-22
P. capax lengths = 65.6 (10+ yrs old), 46.8, 70.2

Arkansas Freshwater Bivalves Field Data Sheet

Site STF-CC-SB2

Date 18 July 1995 County St. Francis Quad Madison
 Drainage St. Francis Substrate SAND BAR Width 30-35 m
 Location St. Francis Floodway ca. 1.7 km upstream of County Road 485 Bridge.

	Live	Dead		Live	Dead
<i>Actinonaias ligamentina</i>			<i>Obliquaria reflexa</i>	1	
<i>Alasmidonta marginata</i>			<i>Obovaria jacksoniana</i>		
<i>Alasmidonta viridis</i>			<i>Obovaria olivaria</i>		
<i>Amblema plicata</i>	2		<i>Plectomerus dombeyanus</i>		
<i>Anodonta suborbiculata</i>			<i>Pleurobema coccineum</i>		
<i>Anodontoides ferussacianus</i>			<i>Pleurobema pyramidatum</i>		
<i>Arcidens confragosus</i>			<i>Potamilus alatus</i>		
<i>Arkansia wheeleri</i>			<i>Potamilus capax</i>	3	5
<i>Cyclonaias tuberculata</i>			<i>Potamilus ohioensis</i>		2
<i>Cyprogenia aberti</i>			<i>Potamilus purpuratus</i>		
<i>Cumberlandia monodonta</i>			<i>Ptychobranhus occidentalis</i>		
<i>Ellipsaria lineolata</i>			<i>Pyganodon grandis</i>		
<i>Elliptio dilatata</i>			<i>Quadrula apiculata</i>		
<i>Epioblasma curtisi</i>			<i>Quadrula cylindrica</i>		
<i>Epioblasma triquetra</i>			<i>Quadrula fragosa</i>		
<i>Epioblasma turgidula</i>			<i>Quadrula metanevra</i>		
<i>Fusconaia ebena</i>			<i>Quadrula nodulata</i>		
<i>Fusconaia flava</i>			<i>Quadrula pustulosa</i>		
<i>Fusconaia ozarkensis</i>			<i>Quadrula quadrula</i>	1	
<i>Lampsilis abrupta</i>			<i>Simpsonaias ambigua</i>		
<i>Lampsilis cardium</i>			<i>Strophitus undulatus</i>		
<i>Lampsilis hydiana</i>			<i>Toxolasma lividus</i>		
<i>Lampsilis ornata</i>			<i>Toxolasma parvus</i>		
<i>Lampsilis powelli</i>			<i>Toxolasma texasensis</i>		
<i>Lampsilis rafinesqueana</i>			<i>Tritogonia verrucosa</i>		
<i>Lampsilis reeveiana</i>			<i>Truncilla donaciformis</i>		
<i>Lampsilis satura</i>			<i>Truncilla truncata</i>		
<i>Lampsilis streckeri</i>			<i>Uniomerus declivus</i>		
<i>Lampsilis teres</i>			<i>Uniomerus tetralasmus</i>		
<i>Lasmigona costata</i>			<i>Utterbackia imbecillis</i>		
<i>Lasmigona complanata</i>			<i>Venustaconcha ellipsiformis</i>		
<i>Leptodea fragilis</i>		5	<i>Venustaconcha pleasi</i>		
<i>Leptodea leptodon</i>			<i>Villosa arkansasensis</i>		
<i>Ligumia recta</i>			<i>Villosa iris</i>		
<i>Ligumia subrostrata</i>			<i>Villosa lienosa</i>		
<i>Megalonaias nervosa</i>			<i>Corbicula fluminea</i>		

NW 1/4 SE 1/4 Sec 21; T6N; R4E J.L. Harris, J.T. Fleming
SAND BAR search covered ca. 100-125 m. Live mussels in troughs behind SAND
ridges. *A. plicata* - L41.6, D31.4, 4 yrs; L31.4, D23.4 (3+ yrs)
Obliquaria - D 23.8 (4+ yrs)

Appendix B.
Semi-Quantitative Survey Site 18 - 19
Field Data Sheets

ASU Commercial Shell Bed Research

Quantitative Sample Data Sheet

Field ID # STF-CC-18+19 Date: 19 July 1995

	Species	Length	Depth	Width	Wet Wt.	Dry Wt.	Age
# 1	Megalonaias		143.5				
	Amblema plicata		76.8				
	" "		71.9				
# 2	Megalonaias		140.3				
	" "		135.2				
	Amblema plicata		86.2				
# 3	" "		96.8				
	Potamilus ohioensis		96.2				
	Amblema plicata		82.5				
	" "		85.5				
	" "		90.5				
# 4	" "		89.5				
	" "		87.6				
	P. purpuratus		53.6				
	Amblema plicata		89.8				
# 5	" "		87.3				
	" "		94.0				
	Megalonaias		148.5				
	Q. pustulosa		60.7				
	Amblema plicata		94.8				
	" "		90.6				
	" "		92.8				
	" "		85.8				
	Megalonaias		152.5				
	Potamilus capax	132.0	98.8	75.0			
	Leptodea fragilis		70.0				
	" "		80.7				
	P. ohioensis		90.1				
	" "		90.6				
	Obliquaria reflexa		48.2				
Q. nodulata		47.6					
Q. quadrula	21.7	15.4 15.4					

ASU Commercial Shell Bed Research

Quantitative Sample Data Sheet

Field ID # STF-CC-18+19 Date: 19 July 1995

Species	Length	Depth	Width	Wet Wt.	Dry Wt.	Age
#6	<i>Amblyma plicata</i>	84.7				
	" "	91.2				
	" "	89.0				
	" "	86.8				
	" "	96.0				
	" "	83.1				
	" "	91.7				
	<i>Megalonaias</i>	151.0				
	" "	145.5				
	" "	143.2				
	" "	152.0				
	<i>Potamilus purpuratus</i>	91.1				
	<i>Megalonaias</i>	155.0				
	" "	150.0				
#7	<i>Amblyma plicata</i>	87.2				
	" "	91.5				
	" "	90.1				
	" "	80.3				
	<i>Obliquaria reflexa</i>	58.2				
	" "	41.4				
	<i>Megalonaias</i>	146.4				
	<i>Amblyma plicata</i>	97.0				
#8	" "	84.1				
	" "	89.5				
	" "	88.6				
	<i>Q. quadrula</i>	67.8				
	<i>Q. nodulata</i>	48.0				
#9	<i>Amblyma plicata</i>	86.5				

